



Centre for Economic Development,
Transport and the Environment

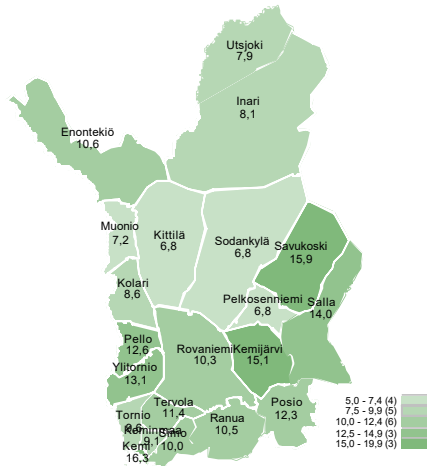
LAPLAND

Employment Bulletin

January 2025

8 610 unemployed jobseekers in January

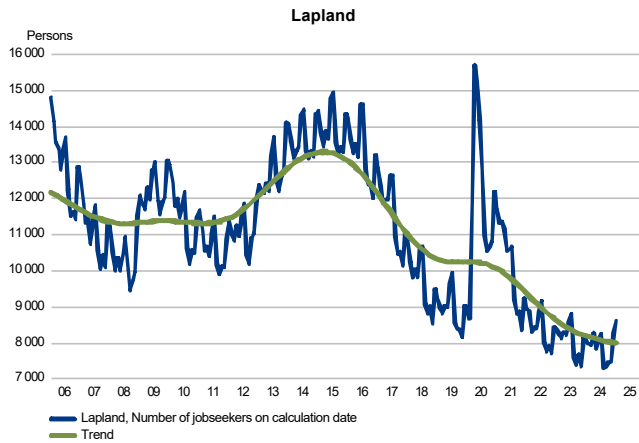
Unemployed jobseekers' percentage of the workforce by municipality



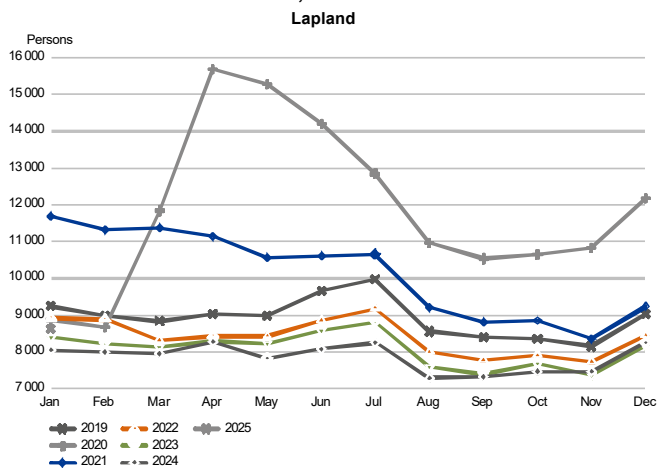
The figures are from the Employment Service Statistics of the Ministry of Economic Affairs and Employment.

Unemployed jobseekers

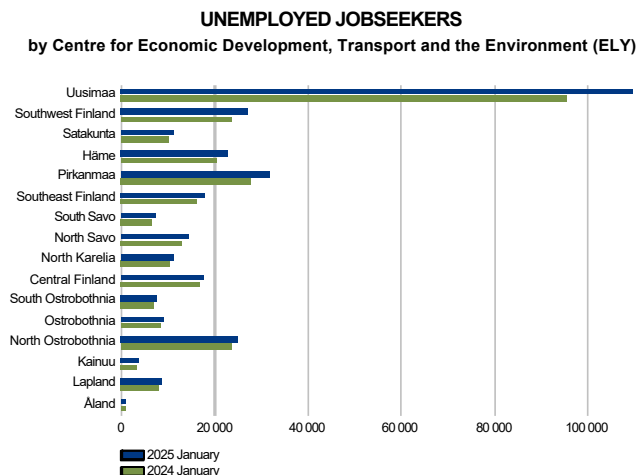
UNEMPLOYED JOBSEEKERS MONTHLY AND TREND



UNEMPLOYED JOBSEEKERS, MONTH BY MONTH COMPARISON



Unemployed jobseekers by sub-regional unit



Unemployed jobseekers and jobs vacant by sub-regional unit

Sub-regional unit	Unemployed jobseekers				%		%		Jobs vacant				%	
	Unemployed jobseekers				%		%		Jobs vacant				%	
	Unemployed jobseekers				%		%		Jobs vacant				%	
Rovaniemi	3 475	3 260	3 212	263	8	493	10,3	1 638	807	1 482	156	11		
Kemi-Tornio	2 780	2 708	2 585	195	8	276	11,9	998	254	1 245	-247	-20		
Torniolaakso	342	316	330	12	4	53	12,9	20	21	27	-7	-26		
Itä-Lappi	830	857	826	4	0	136	13,8	259	68	144	115	80		
Tunturi-Lappi	588	577	519	69	13	89	7,7	436	413	508	-72	-14		
Pohjois-Lappi	596	537	590	6	1	59	7,4	249	169	399	-150	-38		
Lapland	8 611	8 255	8 062	549	7	1 106	10,6	3 600	1 732	3 805	-205	-5		



Unemployed jobseekers by municipality

Unemployed jobseekers and jobs vacant by municipality

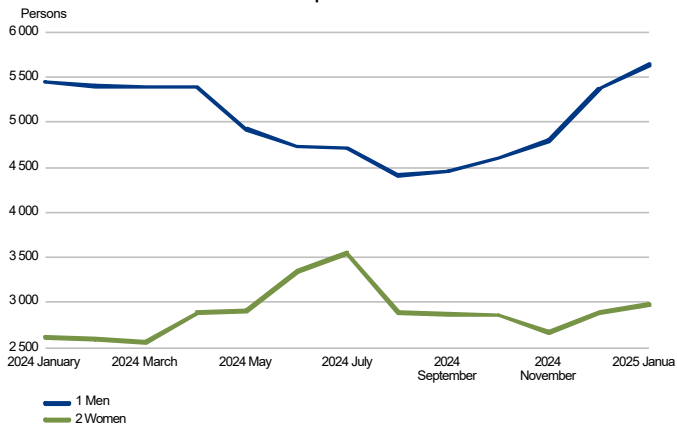
Municipality	Jan 2025	Dec 2024	Jan 2024	Change Jan 2025 Jan 2024		Of the Unemployed unemployed jobseekers percentage fully laid off		Jan 2025	Dec 2024	Jan 2024	Change Jan 2025 Jan 2024	
	Unemployed jobseekers				%		%	Jobs vacant				%
Enontekiö	91	89	97	-6	-6	11	10,6	68	41	58	10	17
Inari	295	275	276	19	7	17	8,1	120	60	119	1	1
Kemi	1 298	1 265	1 192	106	9	87	16,3	313	145	494	-181	-37
Kemijärvi	406	436	394	12	3	85	15,1	133	44	44	89	202
Keminmaa	320	297	302	18	6	45	9,1	32	27	56	-24	-43
Kittilä	255	248	217	38	18	45	6,8	307	315	303	4	1
Kolari	165	159	133	32	24	24	8,6	42	47	97	-55	-57
Muonio	77	81	72	5	7	9	7,2	19	10	50	-31	-62
Pelkosenniemi	27	28	35	-8	-23	...	6,8	19	11	19	0	0
Pello	149	134	141	8	6	28	12,6	8	5	11	-3	-27
Posio	136	143	161	-25	-16	16	12,3	21	6	39	-18	-46
Ranua	144	152	125	19	15	11	10,5	14	12	41	-27	-66
Rovaniemi	3 331	3 108	3 087	244	8	482	10,3	1 624	795	1 441	183	13
Salla	192	193	176	16	9	21	14,0	62	7	37	25	68
Savukoski	69	57	60	9	15	10	15,9	24	0	5	19	380
Simo	112	112	128	-16	-12	15	10,0	9	5	11	-2	-18
Sodankylä	260	229	267	-7	-3	39	6,8	122	103	241	-119	-49
Tervola	137	120	116	21	18	14	11,4	22	8	24	-2	-8
Tornio	913	914	847	66	8	115	9,6	622	69	660	-38	-6
Utsjoki	41	33	47	-6	-13	...	7,9	7	6	39	-32	-82
Ylitornio	193	182	189	4	2	25	13,1	12	16	16	-4	-25
Lapland	8 611	8 255	8 062	549	7	1 106	10,6	3 600	1 732	3 805	-205	-5



Unemployed jobseekers by gender and age-group

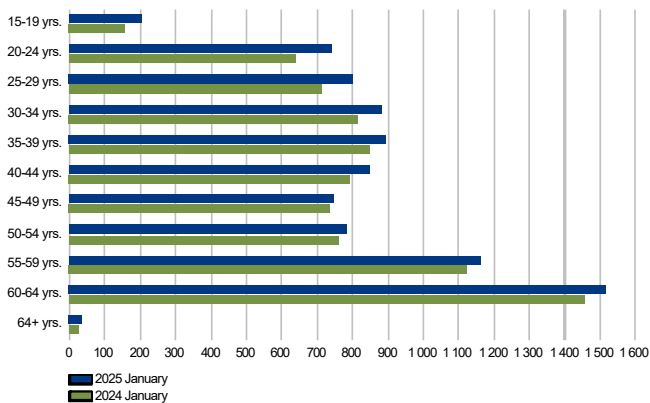
UNEMPLOYED JOBSEEKERS BY GENDER

Lapland



UNEMPLOYED JOBSEEKERS BY AGE GROUP

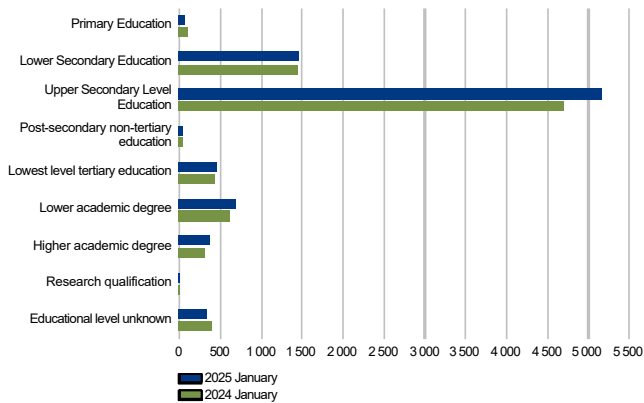
Lapland



Unemployed jobseekers by levels of education and occupational group

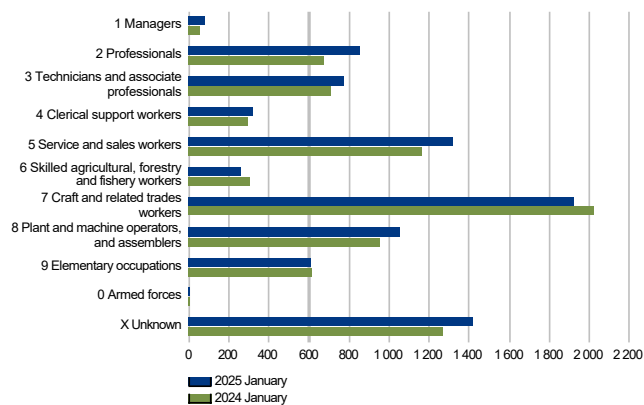
UNEMPLOYED JOBSEEKERS BY LEVEL OF EDUCATION

Lapland



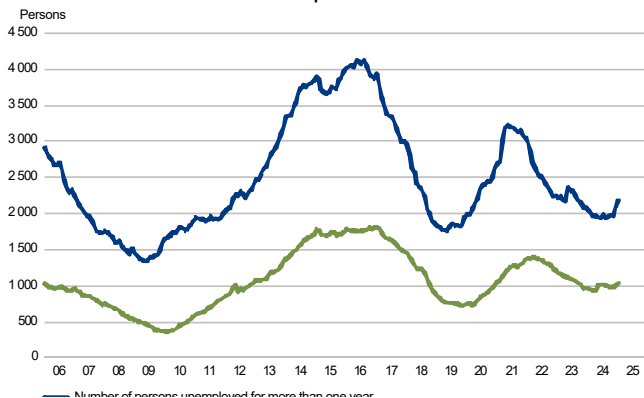
UNEMPLOYED JOBSEEKERS BY OCCUPATIONAL GROUP

Lapland

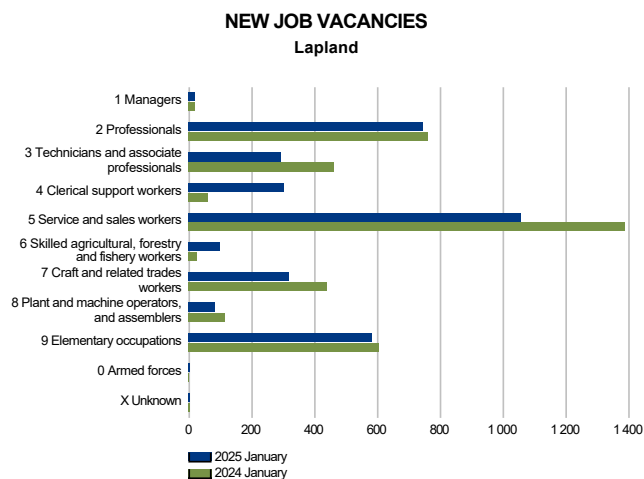


LONG-TERM UNEMPLOYED AT THE END OF THE MONTH

Lapland

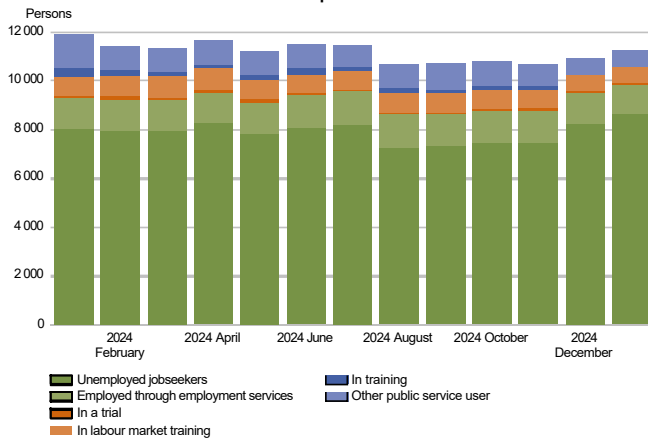


Jobs vacant

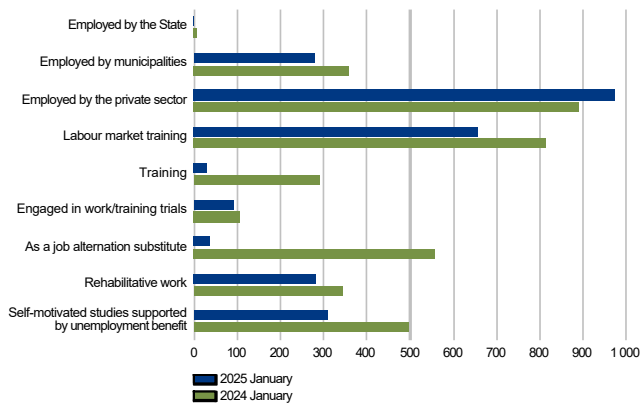


Services

BROAD UNEMPLOYMENT
Lapland

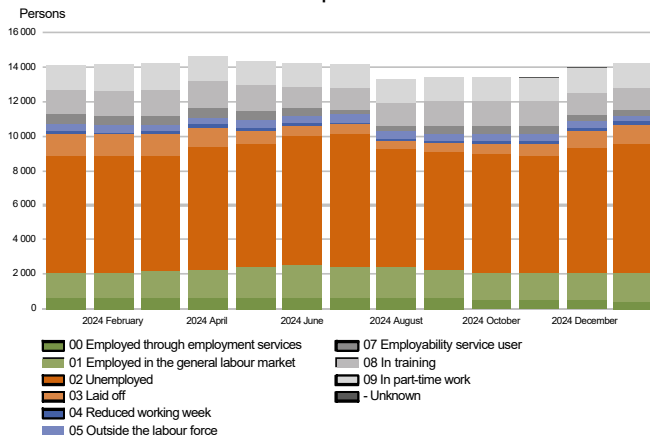


PEOPLE COVERED BY SERVICES
Lapland



All jobseekers

JOBSEEKERS BY GROUP
Lapland



Summary table

EMPLOYMENT SITUATION AT THE END OF 2025 JANUARY (I) AND
DURING JANUARY (II)
ELY CENTRE: LAPLAND

I EMPLOYMENT SITUATION AT THE END OF MONTH	Jan-25	Jan-24	CHANGE NUMBER	CHANGE %
A. JOBSEEKERS				
1. Unemployed jobseekers	8 611	8 062	549	6,8
of whom fully laid off	1 106	1 207	-101	-8,4
2. On reduced working week	175	163	12	7,4
3. Those who have work	3 487	3 515	-28	-0,8
of which in full-time work	1 584	1 433	151	10,5
of which in part-time work	1 437	1 466	-29	-2,0
of whom employed through employment services	466	616	-150	-24,4
4. Persons outside the labour force	1 987	2 424	-437	-18,0
of whom in services promoting employment	343	503	-160	-31,8
of whom in training	1 284	1 475	-191	-12,9
1-4 Total of jobseekers	14 260	14 164	96	0,7
B. LABOUR DEMAND				
1. Jobs vacant	3 600	3 805	-205	-5,4
of those notified for over a month	1 118	877	241	27,5
of those notified for over 2 months	492	317	175	55,2
C. PARTICIPATING IN SERVICES				
1. Employed by the State	0	5	-5	-100,0
2. Employed by municipalities	278	359	-81	-22,6
3. Employed by the private sector	975	890	85	9,6
1-3 Total number of employed people	1 253	1 254	-1	-0,1
4. Labour market training	656	814	-158	-19,4
5. Training	29	291	-262	-90,0
6. Engaged in work/training trials	91	105	-14	-13,3
7. As a job alternation substitute	36	557	-521	-93,5
8. Rehabilitative work	283	343	-60	-17,5
9. Self-motivated studies supported by unemployment benefit	310	497	-187	-37,6
1-9 Total number of people participating in services	2 658	3 861	-1 203	-31,2
D. STRUCTURE OF UNEMPLOYMENT				
1. Unemployed women	2 974	2 613	361	13,8
2. Unemployed men	5 637	5 449	188	3,5
3. Under 25 years old	945	792	153	19,3
4. Over 50 years old	3 499	3 362	137	4,1
5. Unemployed over a year	2 178	2 056	122	5,9
6. Foreign unemployed	625	408	217	53,2
E. UNEMPLOYMENT SECURITY				
1. Unemployed members of employees' unemployment funds	4 057	4 370	-313	-7,2
II EMPLOYMENT SITUATION DURING THE MONTH				
1. Unemployed jobseekers	9 751	9 669	82	0,8
2. Other jobseekers	5 338	5 732	-394	-6,9
1-2 Total number of jobseekers	15 089	15 401	-312	-2,0
3. Vacancies during a month	5 343	5 812	-469	-8,1
New vacancies during a month	3 491	3 870	-379	-9,8
Vacancies filled during a month	85	212	-127	-59,9
of those filled with job-seekers at the Employment Service	17	41	-24	-58,5
Vacancies application period ended or sufficient number of applicants	719	1 383	-664	-48,0
Vacancies cancelled or could not be filled	1 048	690	358	51,9
4. Started spell of unemployment	1 566	1 940	-374	-19,3
5. Completed spell of unemployment	862	1 957	-1 095	-56,0
6. New jobs found through employment services	75	218	-143	-65,6
7. New entrants to labour market training	82	163	-81	-49,7



Foreigners' summary table

FOREIGNERS' EMPLOYMENT SITUATION AT THE END OF 2025 JANUARY (I) AND
DURING JANUARY (II)
ELY CENTRE: LAPLAND

I EMPLOYMENT SITUATION AT THE END OF MONTH	Jan-25	Jan-24	CHANGE NUMBER	CHANGE %
A. JOBSEEKERS				
1. Unemployed jobseekers	625	408	217	53,2
of whom fully laid off	35	30	5	16,7
2. On reduced working week	7	7	0	0,0
3. Those who have work	359	325	34	10,5
of which in full-time work	189	141	48	34,0
of which in part-time work	115	109	6	5,5
of whom employed through employment services	55	75	-20	-26,7
4. Persons outside the labour force	633	679	-46	-6,8
of whom in services promoting employment	16	26	-10	-38,5
of whom in training	582	625	-43	-6,9
1-4 Total of jobseekers	1 624	1 419	205	14,4
C. PARTICIPATING IN SERVICES				
1. Employed by the State	0	0	0	0,0
2. Employed by municipalities	5	19	-14	-73,7
3. Employed by the private sector	71	80	-9	-11,2
1-3 Total number of employed people	76	99	-23	-23,2
4. Labour market training	216	268	-52	-19,4
5. Training	...	5
6. Engaged in work/training trials	11	13	-2	-15,4
7. As a job alternation substitute	0
8. Rehabilitative work	12	10	2	20,0
9. Self-motivated studies supported by unemployment benefit	137	238	-101	-42,4
1-9 Total number of people participating in services	453	637	-184	-28,9
D. STRUCTURE OF UNEMPLOYMENT				
1. Unemployed women	286	181	105	58,0
2. Unemployed men	339	227	112	49,3
3. Under 25 years old	55	28	27	96,4
4. Over 50 years old	162	112	50	44,6
5. Unemployed over a year	96	96	0	0,0
E. UNEMPLOYMENT SECURITY				
1. Unemployed members of employees' unemployment funds	108	75	33	44,0
II EMPLOYMENT SITUATION DURING THE MONTH				
1. Unemployed jobseekers	772	553	219	39,6
2. Other jobseekers	876	941	-65	-6,9
1-2 Total number of jobseekers	1 648	1 494	154	10,3
4. Started spell of unemployment	123	100	23	23,0
5. Completed spell of unemployment	129	134	-5	-3,7
6. New jobs found through employment services	...	15
7. New entrants to labour market training	48	29	19	65,5



Regional table

UNEMPLOYED JOBSEEKERS AND JOBS VACANT BY MUNICIPALITY AT THE END OF 2025 JANUARY
ELY CENTRE: LAPLAND

Municipality	Workforce Unemployed jobseekers								Disabled and chron. ill	Jobs vacant	
	% of workforce	Total	Men	Women	Under 20	Under 25	Over 50	Unemployed			
					years old	years old	years old	over a year			
Enontekiö	860	10,6	91	62	29	0	...	53	25	8	68
Inari	3 640	8,1	295	187	108	...	11	154	91	31	120
Kemi	7 976	16,3	1 298	821	477	35	161	483	372	122	313
Kemijärvi	2 691	15,1	406	297	109	...	22	229	116	33	133
Keminmaa	3 498	9,1	320	212	108	7	39	139	66	22	32
Kittilä	3 757	6,8	255	173	82	8	24	107	47	31	307
Kolari	1 928	8,6	165	122	43	...	11	86	34	13	42
Muonio	1 067	7,2	77	42	35	...	8	38	18	5	19
Pelkosenniemi	400	6,8	27	19	8	0	...	12	5	...	19
Pello	1 187	12,6	149	105	44	...	5	82	31	17	8
Posio	1 102	12,3	136	100	36	0	10	74	37	28	21
Ranua	1 367	10,5	144	109	35	5	17	69	38	30	14
Rovaniemi	32 354	10,3	3 331	2 092	1 239	76	409	1 122	861	453	1 624
Salla	1 370	14,0	192	154	38	...	10	114	54	24	62
Savukoski	435	15,9	69	53	16	...	5	53	13	6	24
Simo	1 115	10,0	112	82	30	...	10	60	32	7	9
Sodankylä	3 846	6,8	260	185	75	...	18	124	41	20	122
Tervola	1 203	11,4	137	84	53	...	18	66	26	10	22
Tornio	9 559	9,6	913	575	338	40	136	330	209	112	622
Utsjoki	517	7,9	41	30	11	...	5	17	10	...	7
Ylitornio	1 471	13,1	193	133	60	...	21	87	52	20	12
Total	81 343	10,6	8 611	5 637	2 974	203	945	3 499	2 178	997	3 600



Information about the website

On this website you will find the latest statistics from ELY Centre for Lapland's monthly Employment Bulletin. You can access a .pdf version of the current and previous months' Employment Bulletin by following the link on the right.

The Employment Bulletin is based on the data from the MEAE's Employment Service Statistics. The Ministry of Economic Affairs and Employment compiles statistics on the clients of the Employment authorities, including registered job-seekers, labour market policy services, and job vacancies. The data is collected from the customer service registries used by the Employment authorities. This means that the data used by MEAE Employment Service Statistics is completely registry-based.

The statistical data covers all persons, services, and open vacancies in the aforementioned groups, as separately defined in the registry by the classifications and variables for the statistical period in question.

Owing to seasonal variations, the Employment Bulletin always includes a comparison with the corresponding month in the previous year. The descriptors used in the Bulletin are also available in a table format. The Employment Bulletins are published at the end of the subsequent calendar month. The official date of publication is announced in advance.

The following symbols have been used:

. Category not applicable

... Data subject to secrecy

Links:

- **Employment Service Statistics online:**
<https://www.tem.fi/en/employment-bulletin-and-employment-service-statistics>
- **Employment Service Statistics' Release dates, Description and Quality Description:**
<https://www.tem.fi/en/release-dates-of-statistics-and-description-and-quality-description>
- **Employment Service Statistics' statistical database (In Finnish):**
<https://www.temtyonvalitystilasto.fi>
- **You can access key information from MEAE's Employment Service Statistics by visiting the Statistics Finland's StatFin database:**
<https://statfin.stat.fi/PxWeb/pxweb/en/StatFin/>
- **The Employment Service Statistics data is also available from the MEAE Publications page (only available in Finnish):**
<https://www.tem.fi/tyopoliittinen-aikakauskirja>
- **Comparison between the statistics of Statistics Finland and the Ministry of Economic Affairs and Employment:**
<https://media.graphassets.com/ibCSU7MzQ5S7MeTqISid?dl=true>

Instructions for referencing:

Official Statistics of Finland (OSF): Ministry of Economic Affairs and Employment / Employment Service Statistics. 202Y:MM, Lapland's Employment Bulletin, MONTH 202Y. Rovaniemi: Centre for Economic Development, Transport and the Environment (date of reference). Available at:
<https://www.temtyollisyyskatsaus.fi/lappi.aspx>



Contact information

Centre for Economic Development, Transport and the Environment for Lapland

Director Marja Perälä, +358 295 037 050

Senior Specialist Tiina Keränen, 0295 037 830

Head of Unit Satu Huikuri, +358 295 037 049

Researcher Tuula Uusipaavalniemi, +358 295 037 142

Information Assistant Satu Takoja, +358 295 037 131

E-mail: [firstname.lastname\(at\)ely-keskus.fi](mailto:firstname.lastname(at)ely-keskus.fi)

<https://www.temtyollisyyskatsaus.fi/lappi.aspx>

