



Elinkeino-, liikenne- ja ympäristökeskus
Närings-, trafik- och miljöcentralen
Centre for Economic Development, Transport and the Environment

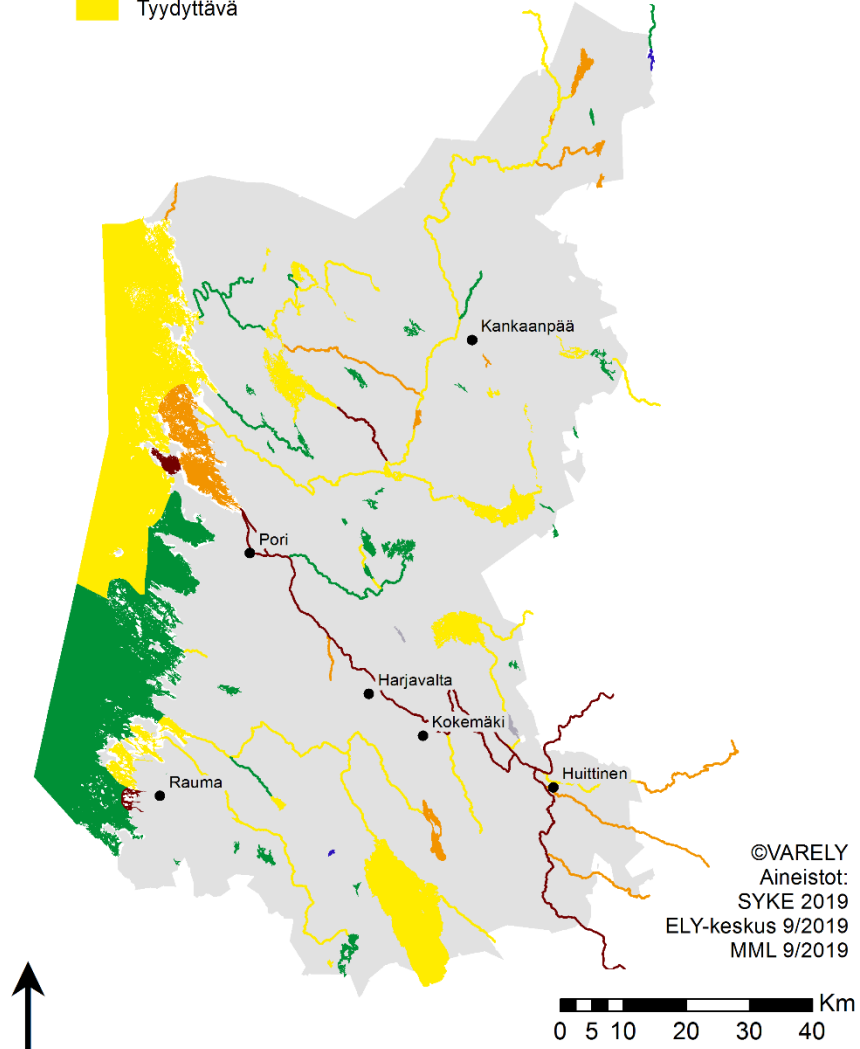
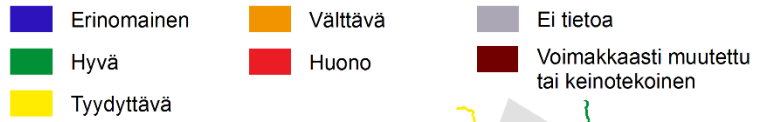
Sääksjärven nykytila

Kokemäki 24.10.2019

Heli Perttula

Varsinais-Suomen ELY-keskus

Satakunnan pintavesien ekologinen tila 2019





Sääksjärven ekologinen tila tyydyttävä (2012-2017)

- Biologiset muuttujat -> T
 - kasviplankton T
 - vesikasvit T
 - kivikkorantojen päällykslevät T
 - kivikkorantojen pohjaeläimet T
 - kalat Hy
- Fysikaalis-kemiallinen tila T
 - Kokonaisfosfori T
 - Kokonaistyyppi Hy



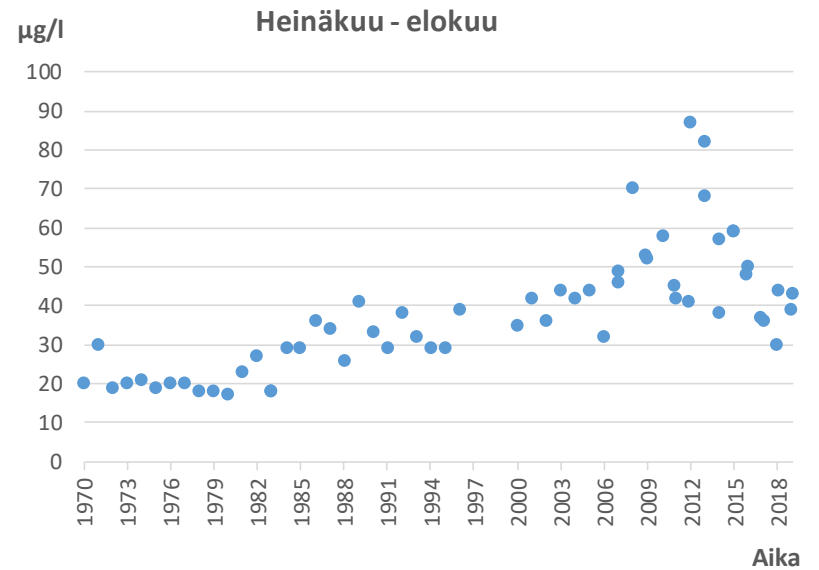
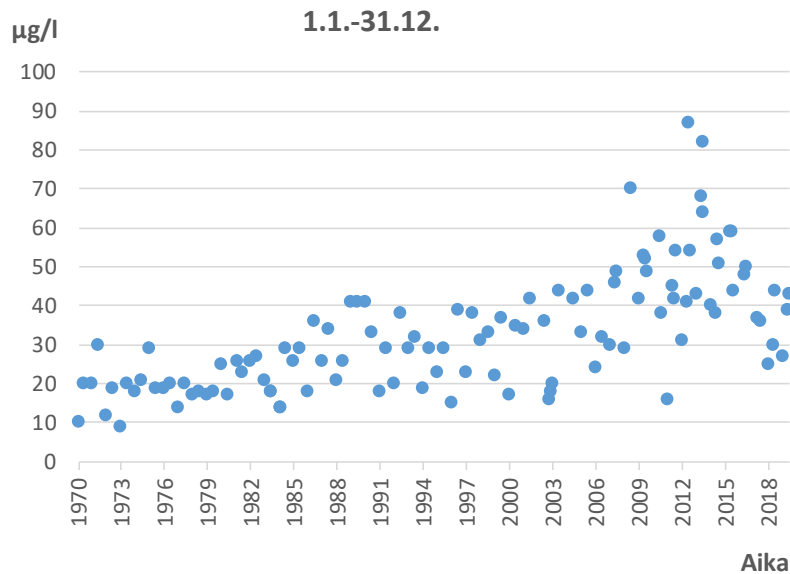
Tilaluokan raja-arvot - Matalat humusjärvet (Mh)

	Hy/T	Sääksjärvi	T/V
Kokonaisfosforipitoisuus ($\mu\text{g/l}$)	40	55,5	65
Kokonaistyyppipitoisuus ($\mu\text{g/l}$)	750	733	1100
Klorofylli-a ($\mu\text{g/l}$)	20	20,4	40

- kesä-syyskuun keskiarvot

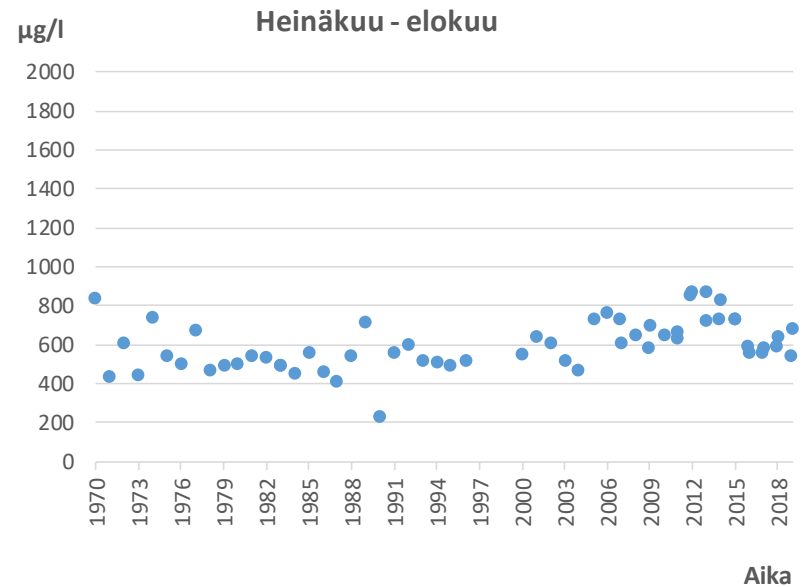
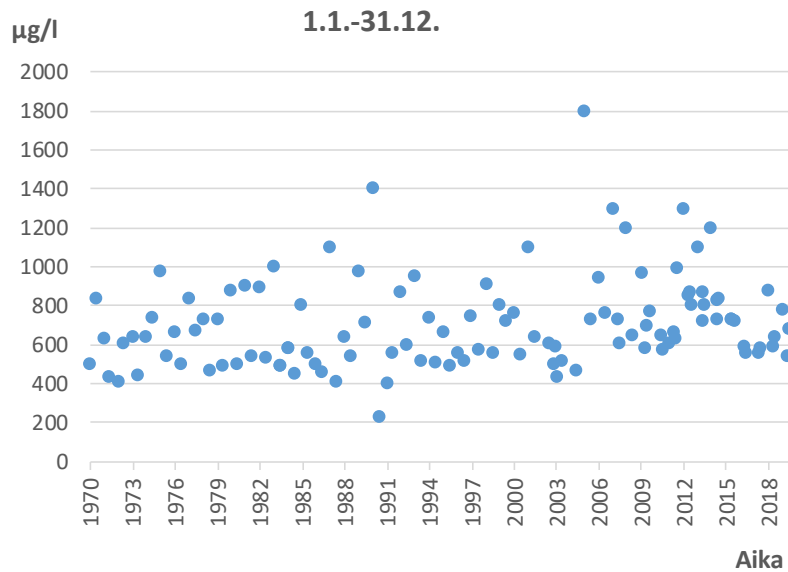


Kokonaisfosforipitoisuus



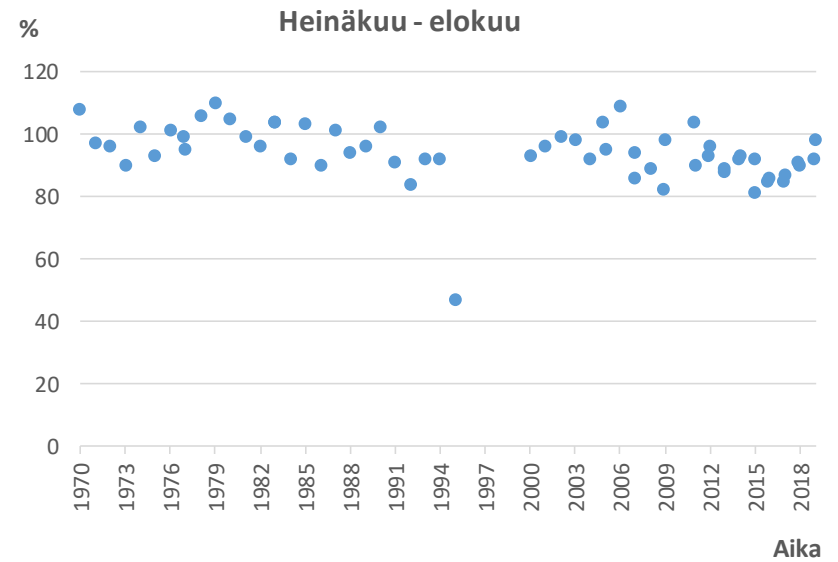
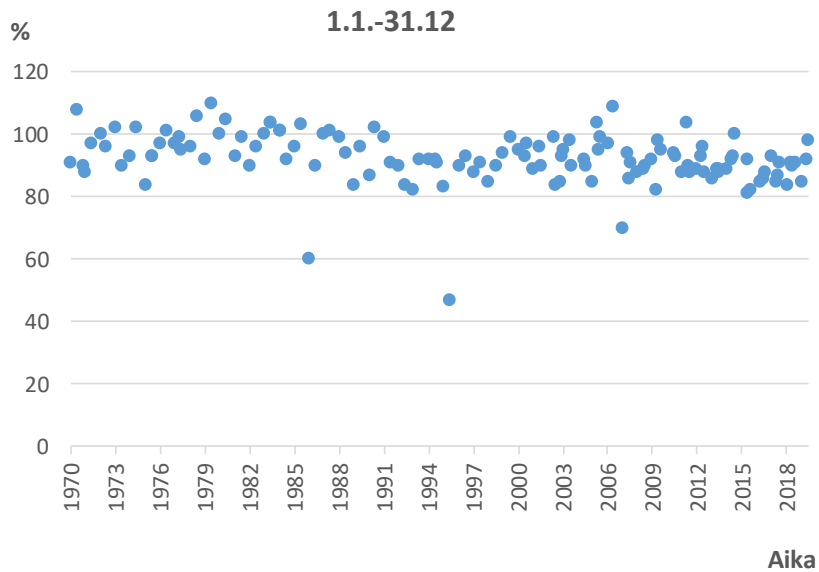


Kokonaistyyppipitoisuus



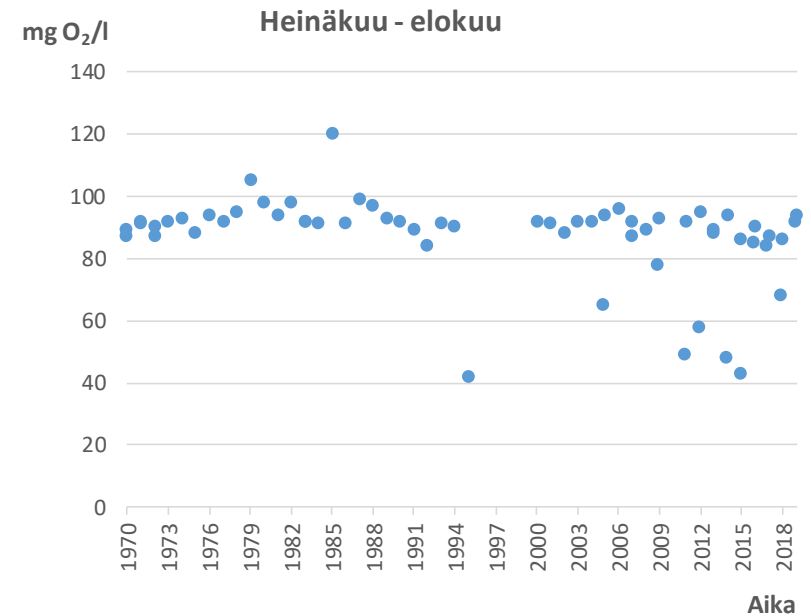
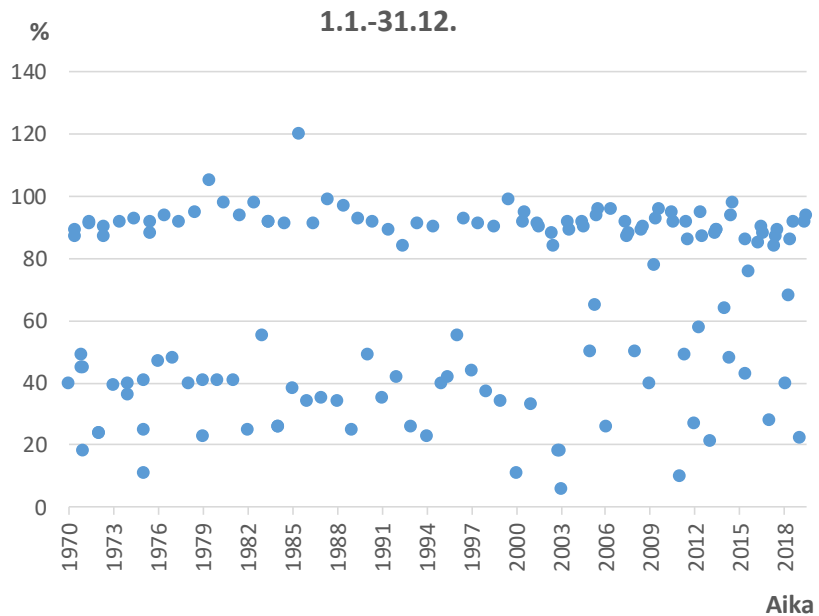


Hapen kyllästysaste (1 m)



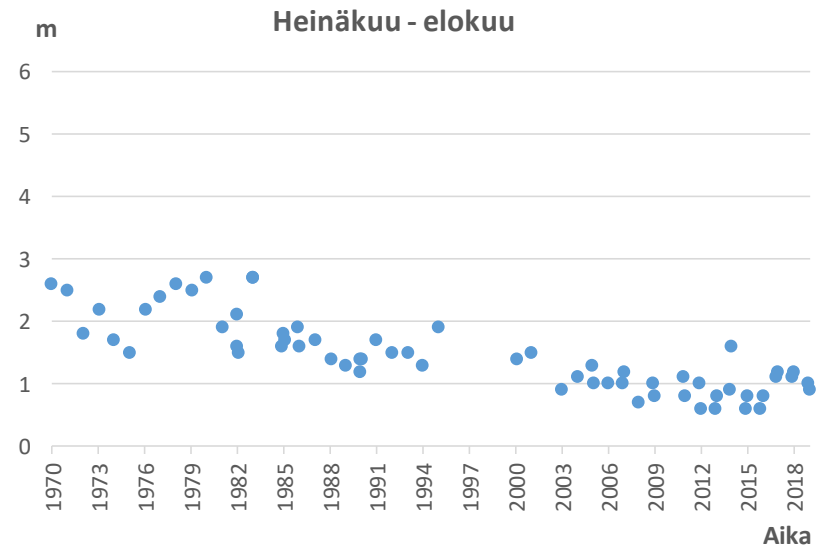
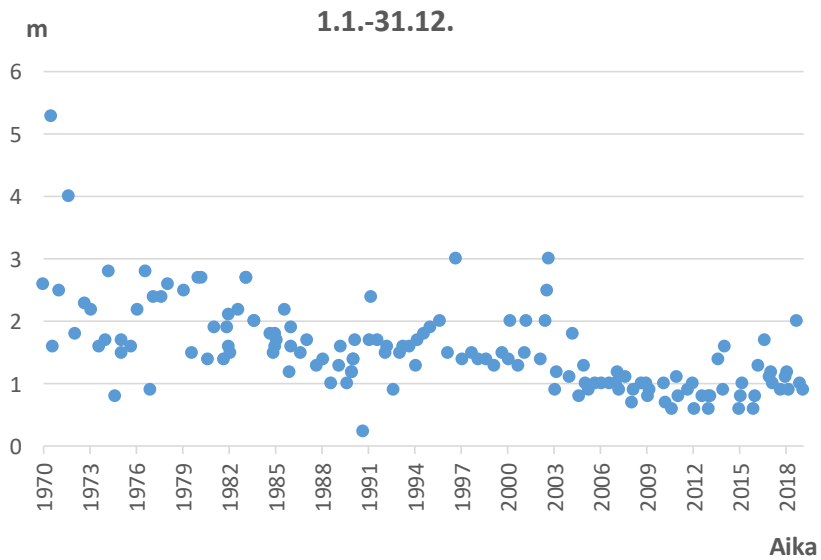


Hapen kyllästysaste (pohja)



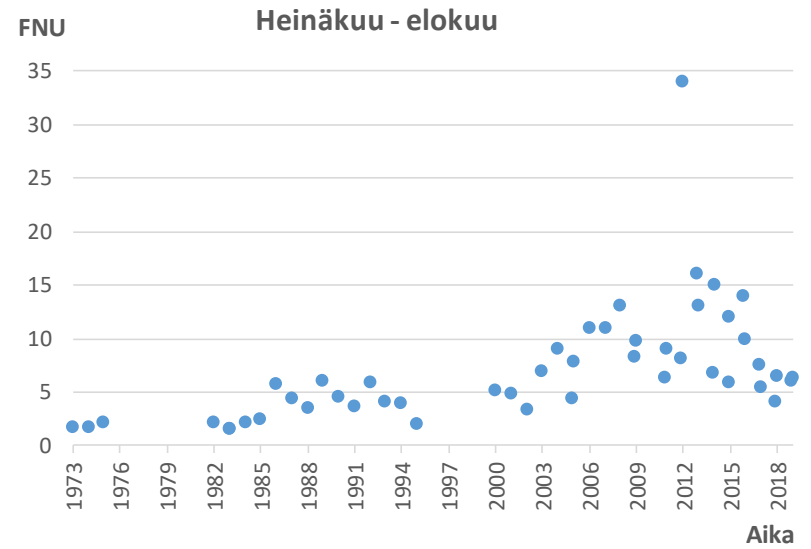
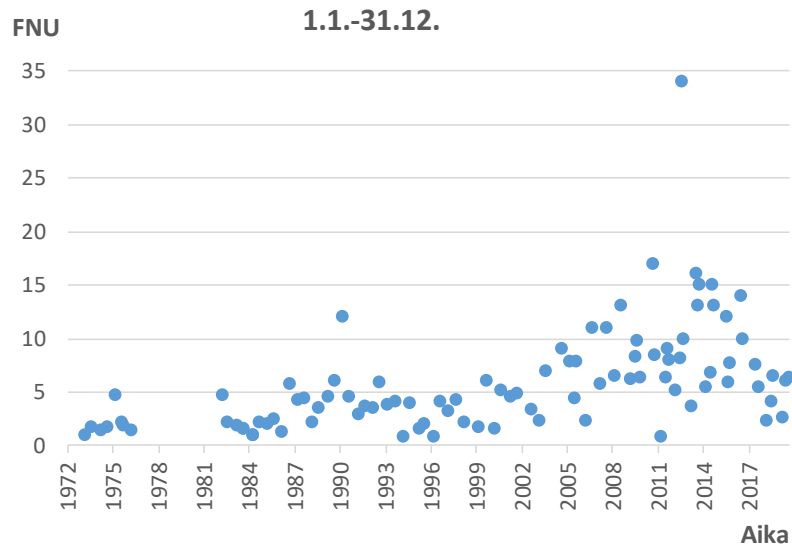


Näkösyvyys



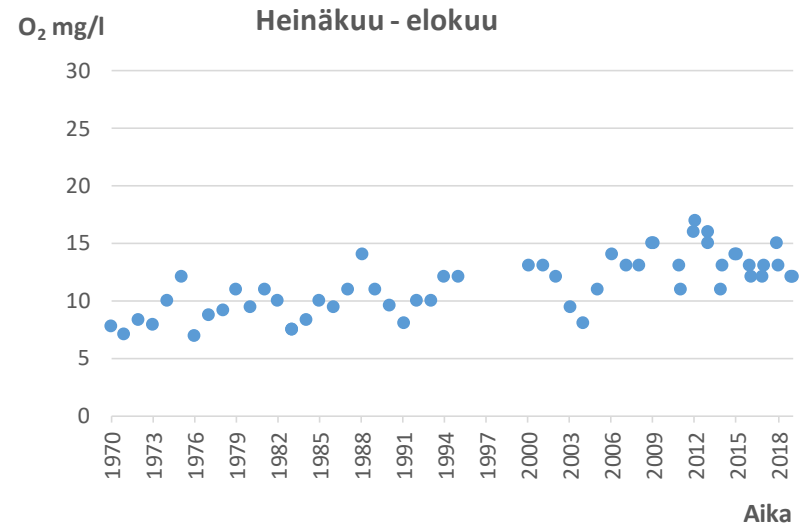
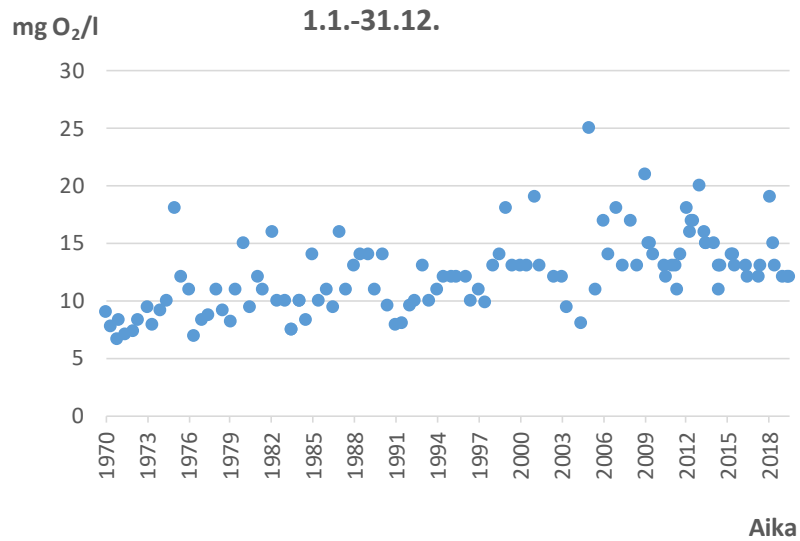


Sameus



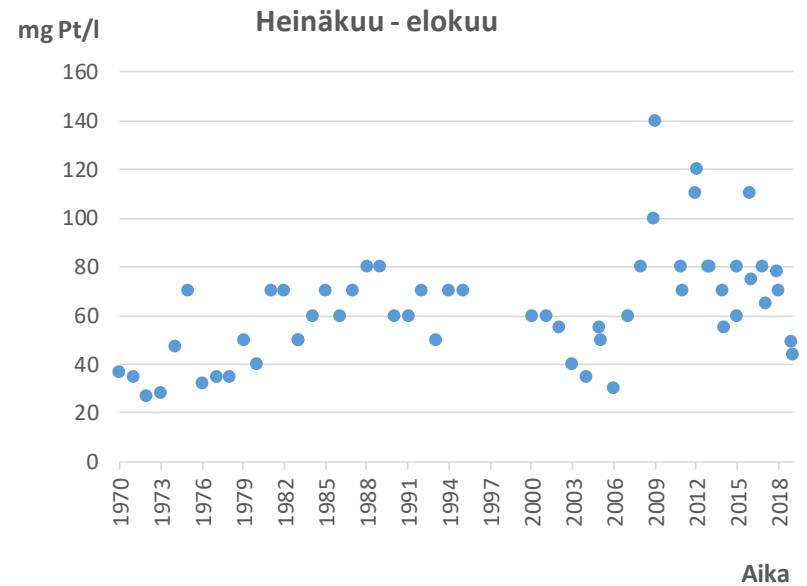
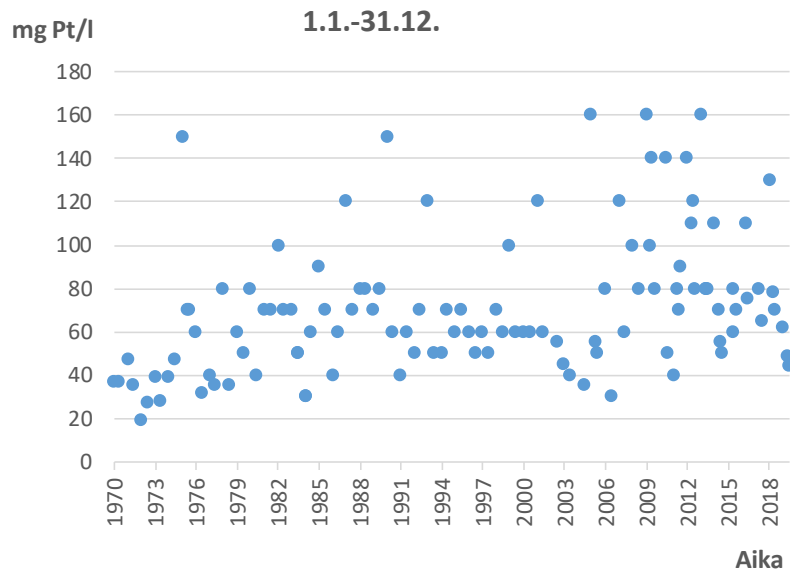


Kemiallinen hapen kulutus



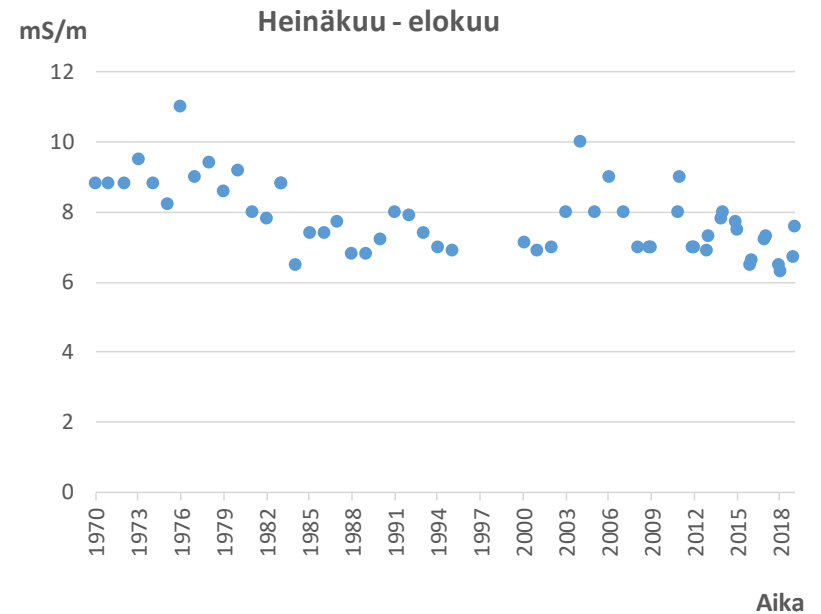
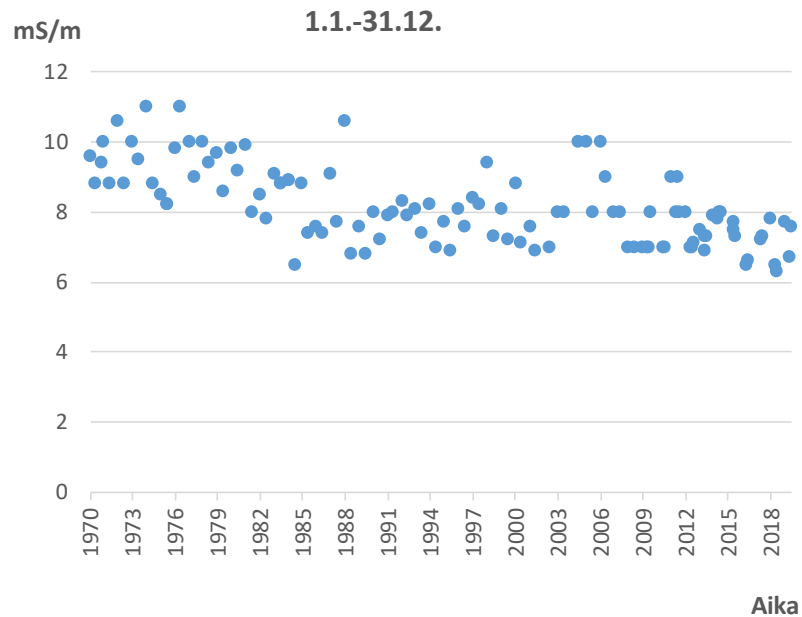


Veden väri



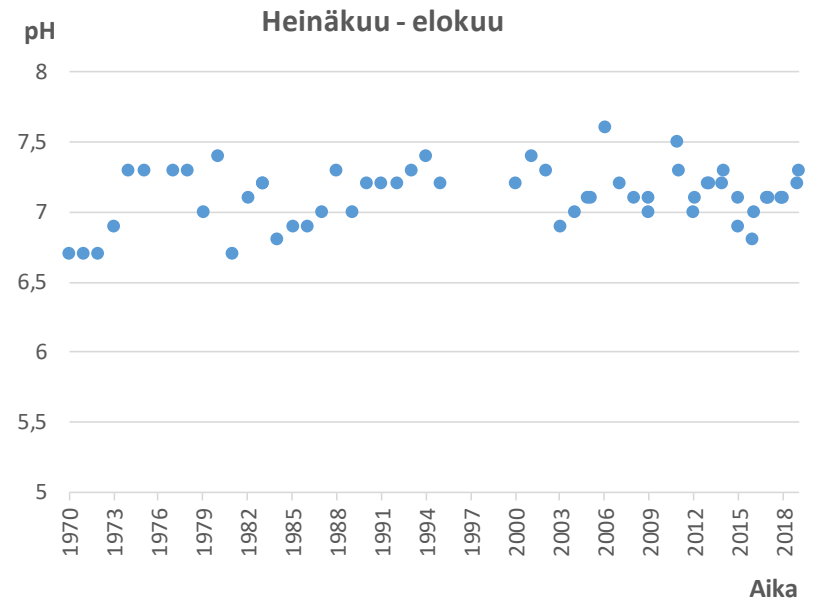
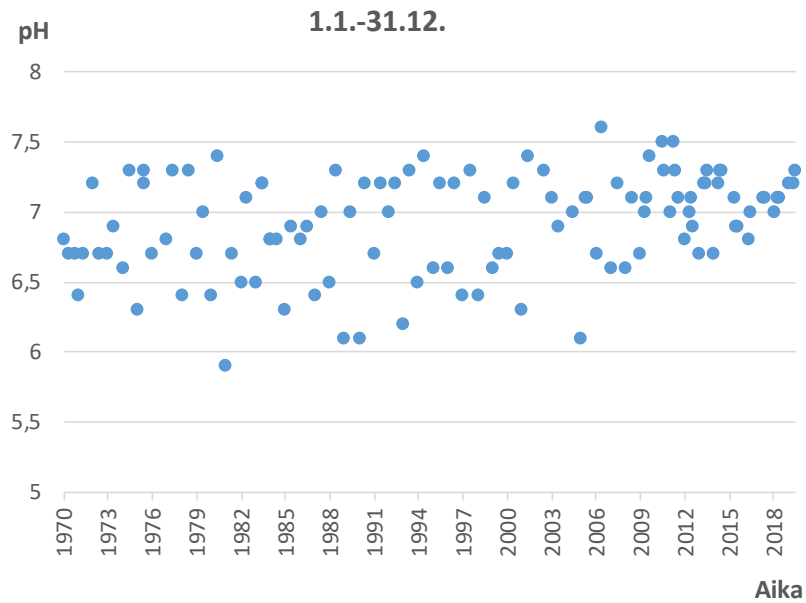


Sähköjohtavuus



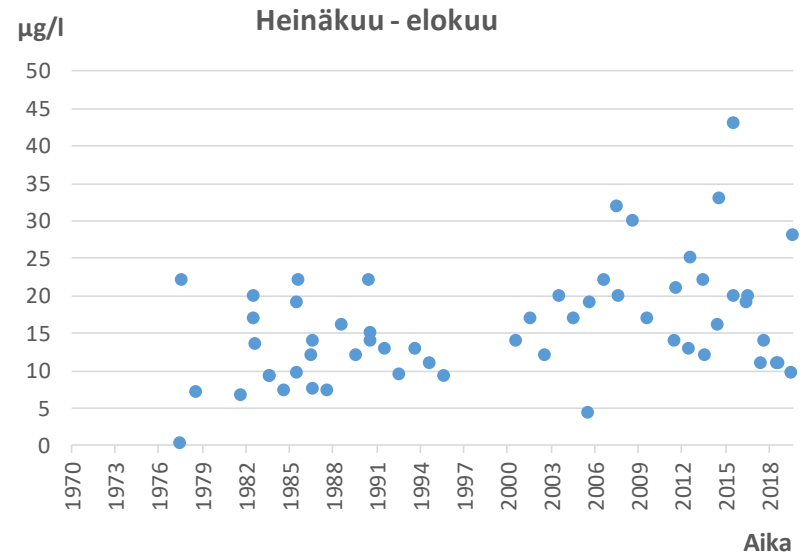
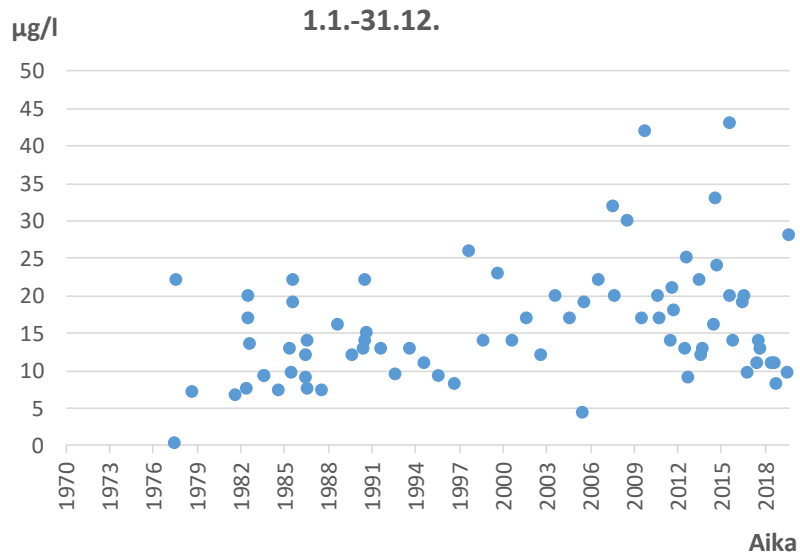


Veden pH





Klorofylli-a





Piilijoki

