



Centre for Economic Development,  
Transport and the Environment

LAPLAND

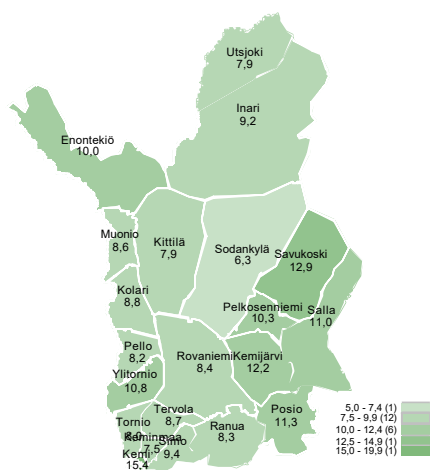
# Employment Bulletin

September 2025

# 7 530 unemployed jobseekers in September

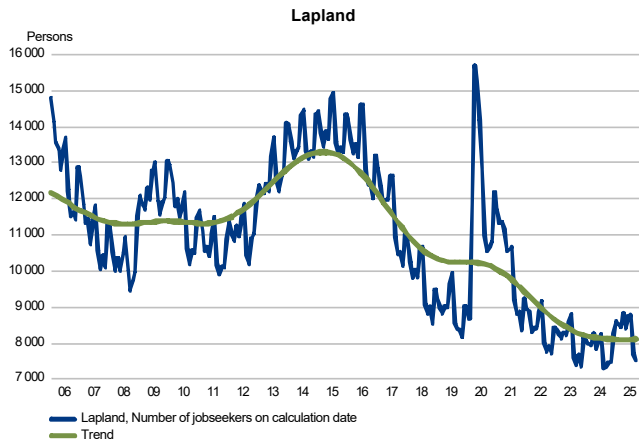
Unemployed jobseekers' percentage of the workforce by municipality

The figures are from KEHA Centre, Employment Service Statistics.

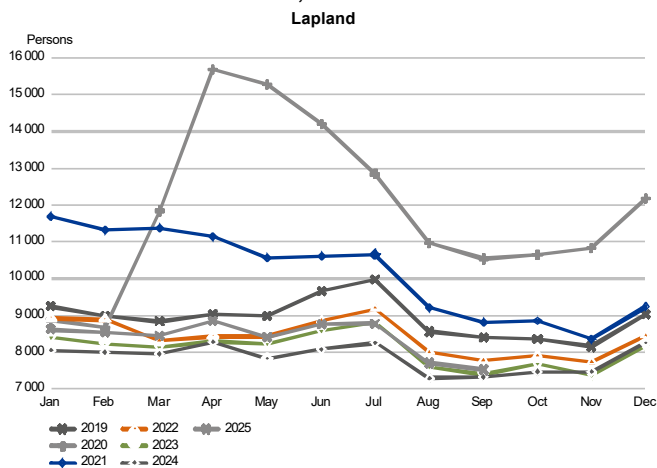


## Unemployed jobseekers

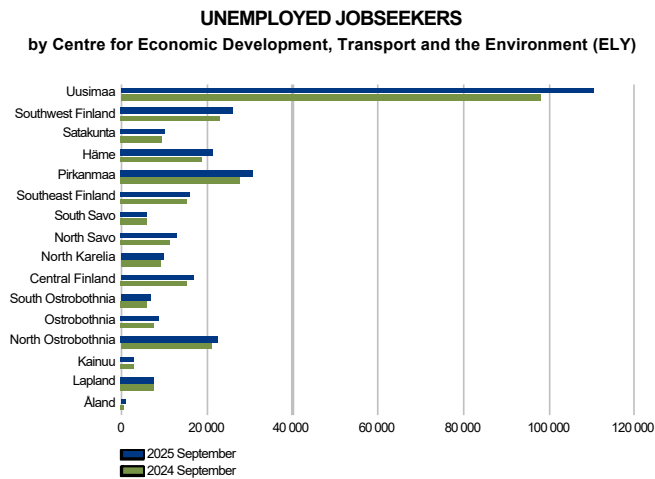
UNEEMPLOYED JOBSEEKERS MONTHLY AND TREND



UNEEMPLOYED JOBSEEKERS, MONTH BY MONTH COMPARISON



## Unemployed jobseekers by sub-regional unit



### Unemployed jobseekers and jobs vacant by sub-regional unit

Sub-regional unit	Change			Of the Unemployed				Change			
	Sep 2025	Aug 2025	Sep 2024	Sep 2025	Sep 2024	unemployed jobseekers fully laid off	jobseekers' percentage of the workforce	Sep 2025	Aug 2025	Sep 2024	Sep 2025
Sub-regional unit	Unemployed jobseekers			%		%		Jobs vacant			%
Rovaniemi	2 843	3 091	2 844	-1	0	119	8,4	1 466	1 809	1 307	159
Kemi-Tornio	2 467	2 445	2 189	278	13	123	10,6	239	224	498	-259
Torniolaakso	256	237	252	4	2	18	9,6	51	24	52	-1
Itä-Lappi	700	671	732	-32	-4	40	11,7	101	119	279	-178
Tunturi-Lappi	644	659	725	-81	-11	63	8,5	901	1 097	864	37
Pohjois-Lappi	618	604	587	31	5	56	7,7	444	543	475	-31
Lapland	7 528	7 707	7 329	199	3	419	9,3	3 202	3 816	3 475	-273





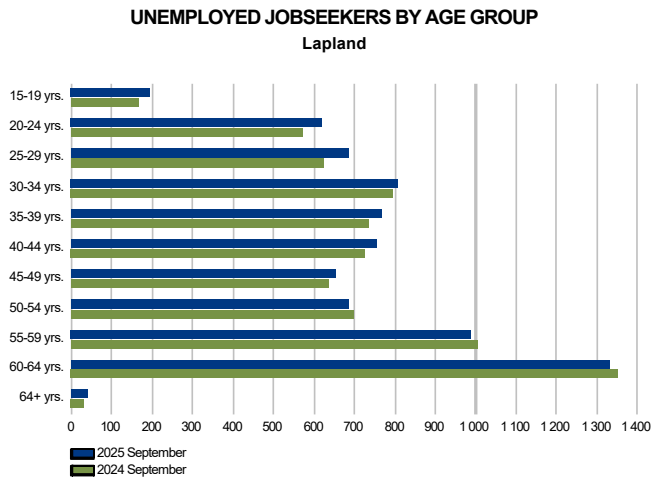
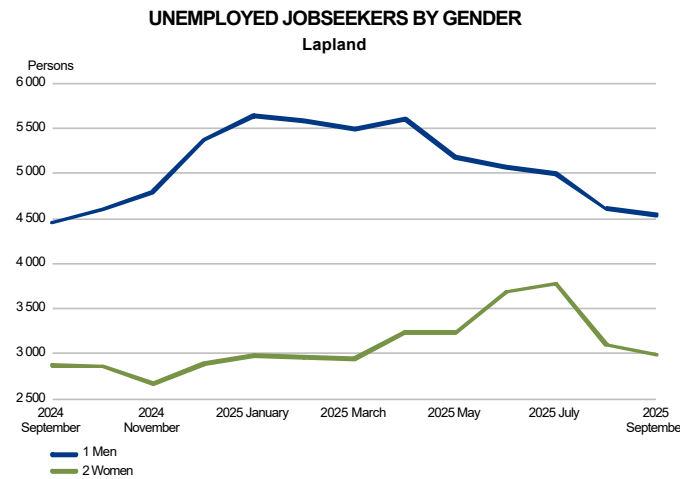
## Unemployed jobseekers by municipality

### Unemployed jobseekers and jobs vacant by municipality

Municipality	Sep 2025	Aug 2025	Sep 2024	Change		Of the Unemployed		Sep 2025	Aug 2025	Sep 2024	Change	
				Sep 2025	Sep 2024	unemployed jobseekers fully laid off	jobseekers' percentage of the workforce				Sep 2025	Sep 2024
	Unemployed jobseekers				%		%	Jobs vacant				%
Enontekiö	86	76	81	5	6	...	10,0	117	136	100	17	17
Inari	336	336	335	1	0	34	9,2	347	442	385	-38	-10
Kemi	1 228	1 207	1 058	170	16	49	15,4	101	102	267	-166	-62
Kemijärvi	327	305	357	-30	-8	12	12,2	30	39	72	-42	-58
Keminmaa	262	267	259	3	1	13	7,5	32	24	35	-3	-9
Kittilä	296	313	310	-14	-5	42	7,9	567	600	552	15	3
Kolari	170	160	204	-34	-17	13	8,8	166	299	157	9	6
Muonio	92	110	130	-38	-29	5	8,6	51	62	55	-4	-7
Pelkosenniemi	41	42	38	3	8	5	10,3	33	48	83	-50	-60
Pello	97	92	107	-10	-9	10	8,2	20	11	25	-5	-20
Posio	125	131	118	7	6	8	11,3	9	9	29	-20	-69
Ranua	113	108	119	-6	-5	...	8,3	11	26	38	-27	-71
Rovaniemi	2 730	2 983	2 725	5	0	115	8,4	1 455	1 783	1 269	186	15
Salla	151	139	164	-13	-8	9	11,0	26	23	58	-32	-55
Savukoski	56	54	55	1	2	6	12,9	...	...	37	...	...
Simo	105	96	87	18	21	10	9,4	...	...	26	...	...
Sodankylä	241	224	218	23	11	22	6,3	86	91	76	10	13
Tervola	105	105	93	12	13	5	8,7	14	9	20	-6	-30
Tornio	767	770	692	75	11	46	8,0	91	88	150	-59	-39
Utsjoki	41	44	34	7	21	0	7,9	11	10	14	-3	-21
Ylitornio	159	145	145	14	10	8	10,8	31	13	27	4	15
Lapland	7 528	7 707	7 329	199	3	419	9,3	3 202	3 816	3 475	-273	-8



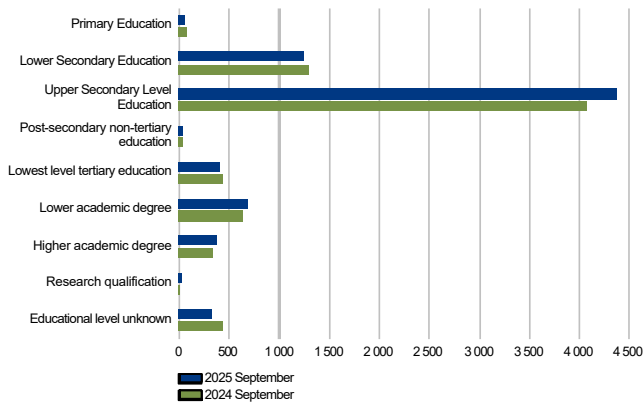
Unemployed jobseekers by gender and age-group



## Unemployed jobseekers by levels of education and occupational group

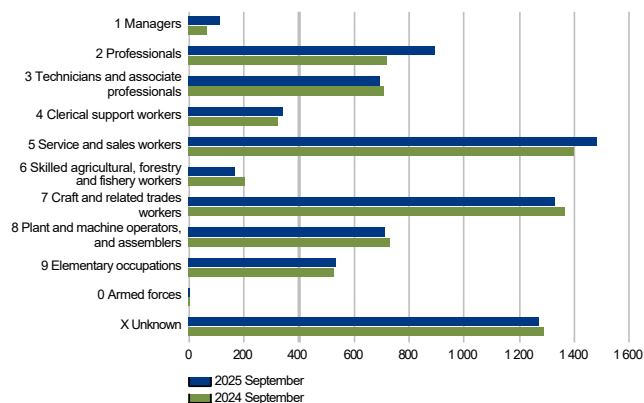
UNEMPLOYED JOBSEEKERS BY LEVEL OF EDUCATION

Lapland



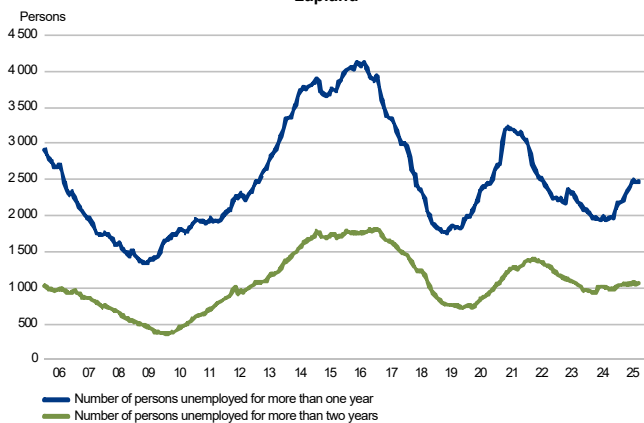
UNEMPLOYED JOBSEEKERS BY OCCUPATIONAL GROUP

Lapland

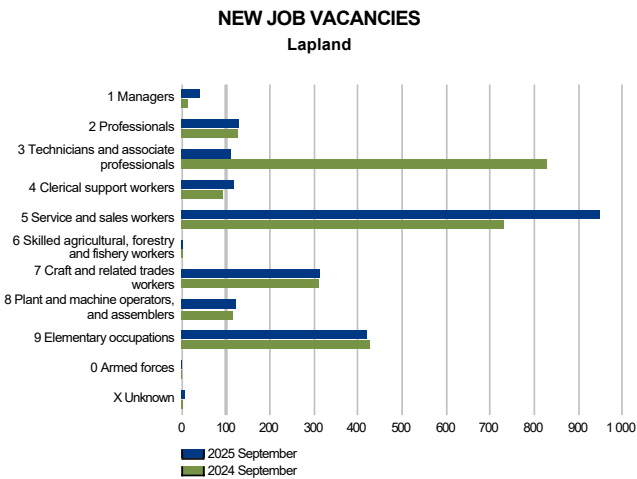


LONG-TERM UNEMPLOYED AT THE END OF THE MONTH

Lapland



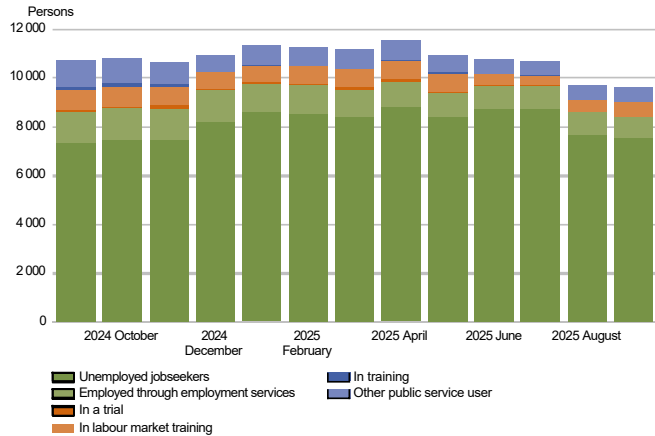
## Jobs vacant



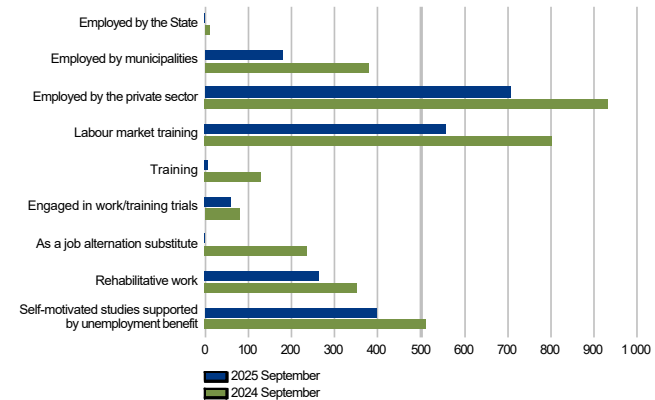


Services

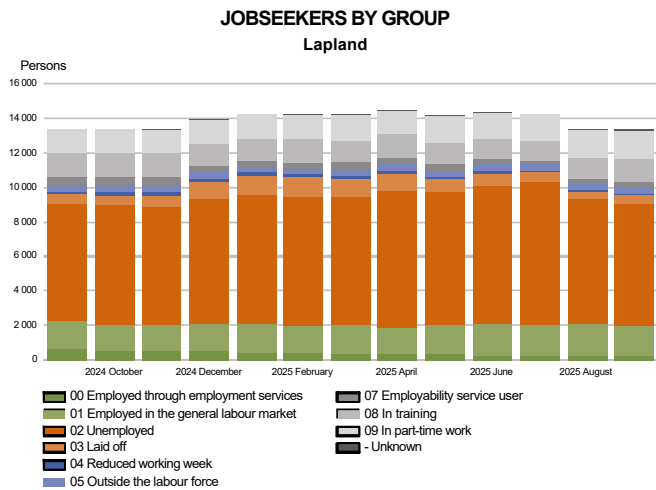
BROAD UNEMPLOYMENT  
Lapland



PEOPLE COVERED BY SERVICES  
Lapland



All jobseekers



## Summary table

EMPLOYMENT SITUATION AT THE END OF 2025 SEPTEMBER (I) AND  
DURING SEPTEMBER (II)  
ELY CENTRE: LAPLAND

I EMPLOYMENT SITUATION AT THE END OF MONTH	Sep-25	Sep-24	CHANGE NUMBER	CHANGE %
<b>A. JOBSEEKERS</b>				
1. Unemployed jobseekers	7 528	7 329	199	2,7
of whom fully laid off	419	498	-79	-15,9
2. On reduced working week	95	155	-60	-38,7
3. Those who have work	3 631	3 600	31	0,9
of which in full-time work	1 761	1 657	104	6,3
of which in part-time work	1 650	1 336	314	23,5
of whom employed through employment services	220	607	-387	-63,8
4. Persons outside the labour force	2 071	2 262	-191	-8,4
of whom in services promoting employment	320	434	-114	-26,3
of whom in training	1 355	1 431	-76	-5,3
1-4 Total of jobseekers	13 325	13 346	-21	-0,2
<b>B. LABOUR DEMAND</b>				
1. Jobs vacant	3 202	3 475	-273	-7,9
of those notified for over a month	1 914	1 700	214	12,6
of those notified for over 2 months	1 292	1 145	147	12,8
<b>C. PARTICIPATING IN SERVICES</b>				
1. Employed by the State	0	12	-12	-100,0
2. Employed by municipalities	178	378	-200	-52,9
3. Employed by the private sector	705	931	-226	-24,3
1-3 Total number of employed people	883	1 321	-438	-33,2
4. Labour market training	556	803	-247	-30,8
5. Training	8	129	-121	-93,8
6. Engaged in work/training trials	59	81	-22	-27,2
7. As a job alternation substitute	0	238	-238	-100,0
8. Rehabilitative work	263	349	-86	-24,6
9. Self-motivated studies supported by unemployment benefit	396	510	-114	-22,4
1-9 Total number of people participating in services	2 165	3 431	-1 266	-36,9
<b>D. STRUCTURE OF UNEMPLOYMENT</b>				
1. Unemployed women	2 988	2 871	117	4,1
2. Unemployed men	4 536	4 458	78	1,7
3. Under 25 years old	812	734	78	10,6
4. Over 50 years old	3 044	3 082	-38	-1,2
5. Unemployed over a year	2 472	1 964	508	25,9
6. Foreign unemployed	587	568	19	3,3
<b>E. UNEMPLOYMENT SECURITY</b>				
1. Unemployed members of employees' unemployment funds	2 981	3 558	-577	-16,2
<b>II EMPLOYMENT SITUATION DURING THE MONTH</b>				
1. Unemployed jobseekers	8 432	8 531	-99	-1,2
2. Other jobseekers	5 677	5 704	-27	-0,5
1-2 Total number of jobseekers	14 109	14 235	-126	-0,9
3. Vacancies during a month	4 991	6 302	-1 311	-20,8
New vacancies during a month	2 209	2 645	-436	-16,5
Vacancies application period ended or sufficient number of applicants	2 651	698	1 953	279,8
4. Started spell of unemployment	1 291	1 454	-163	-11,2
5. Completed spell of unemployment	1 054	1 503	-449	-29,9
6. New jobs found through employment services	43	82	-39	-47,6
7. New entrants to labour market training	199	142	57	40,1



## Foreigners' summary table

FOREIGNERS' EMPLOYMENT SITUATION AT THE END OF 2025 SEPTEMBER (I) AND  
DURING SEPTEMBER (II)  
ELY CENTRE: LAPLAND

I EMPLOYMENT SITUATION AT THE END OF MONTH	Sep-25	Sep-24	CHANGE NUMBER	CHANGE %
<b>A. JOBSEEKERS</b>				
1. Unemployed jobseekers	587	568	19	3,3
of whom fully laid off	26	24	2	8,3
2. On reduced working week	8	14	-6	-42,9
3. Those who have work	381	304	77	25,3
of which in full-time work	221	165	56	33,9
of which in part-time work	136	83	53	63,9
of whom employed through employment services	24	56	-32	-57,1
4. Persons outside the labour force	726	735	-9	-1,2
of whom in services promoting employment	12	29	-17	-58,6
of whom in training	667	673	-6	-0,9
1-4 Total of jobseekers	1702	1621	81	5,0
<b>C. PARTICIPATING IN SERVICES</b>				
1. Employed by the State	0	0	0	0,0
2. Employed by municipalities	5	10	-5	-50,0
3. Employed by the private sector	34	67	-33	-49,3
1-3 Total number of employed people	39	77	-38	-49,4
4. Labour market training	275	327	-52	-15,9
5. Training	0	...	...	...
6. Engaged in work/training trials	6	16	-10	-62,5
7. As a job alternation substitute	0	0	0	0,0
8. Rehabilitative work	6	13	-7	-53,8
9. Self-motivated studies supported by unemployment benefit	204	252	-48	-19,0
1-9 Total number of people participating in services	530	686	-156	-22,7
<b>D. STRUCTURE OF UNEMPLOYMENT</b>				
1. Unemployed women	267	292	-25	-8,6
2. Unemployed men	316	276	40	14,5
3. Under 25 years old	45	47	-2	-4,3
4. Over 50 years old	163	147	16	10,9
5. Unemployed over a year	118	87	31	35,6
<b>E. UNEMPLOYMENT SECURITY</b>				
1. Unemployed members of employees' unemployment funds	124	141	-17	-12,1
<b>II EMPLOYMENT SITUATION DURING THE MONTH</b>				
1. Unemployed jobseekers	669	705	-36	-5,1
2. Other jobseekers	1081	978	103	10,5
1-2 Total number of jobseekers	1750	1683	67	4,0
4. Started spell of unemployment	142	130	12	9,2
5. Completed spell of unemployment	90	150	-60	-40,0
6. New jobs found through employment services	5	8	-3	-37,5
7. New entrants to labour market training	73	20	53	265,0



## Regional table

## UNEMPLOYED JOBSEEKERS AND JOBS VACANT BY MUNICIPALITY AT THE END OF 2025 SEPTEMBER

ELY CENTRE: LAPLAND

Municipality	Workforce Unemployed jobseekers								Disabled and chron. ill	Jobs vacant	
	% of workforce	Total	Men	Women	Under 20	Under 25	Over 50	Unemployed			
					years old	years old	years old	over a year			
Enontekiö	860	10,0	86	61	25	...	...	41	19	8	117
Inari	3 640	9,2	336	204	132	...	18	159	93	28	347
Kemi	7 976	15,4	1228	727	501	39	155	467	452	145	101
Kemijärvi	2 691	12,2	327	235	92	7	19	177	123	36	30
Keminmaa	3 498	7,5	262	155	107	8	32	120	72	42	32
Kittilä	3 757	7,9	296	180	116	...	22	118	62	33	567
Kolari	1 928	8,8	170	99	71	0	...	79	34	17	166
Muonio	1 067	8,6	92	48	44	...	5	41	14	...	51
Pelkosenniemi	400	10,3	41	26	15	0	...	14	5	...	33
Pello	1 187	8,2	97	62	35	...	10	52	25	16	20
Posio	1 102	11,3	125	95	30	...	7	75	49	22	9
Ranua	1 367	8,3	113	80	33	...	12	59	44	15	11
Rovaniemi	32 354	8,4	2 730	1 570	1 157	88	353	911	964	459	1 455
Salla	1 370	11,0	151	113	38	...	6	86	70	24	26
Savukoski	435	12,9	56	35	20	0	...	41	17	8	...
Simo	1 115	9,4	105	68	37	...	5	55	42	7	...
Sodankylä	3 846	6,3	241	151	90	...	10	125	61	25	86
Tervola	1 203	8,7	105	65	40	...	7	47	33	10	14
Tornio	9 559	8,0	767	437	330	27	126	271	228	121	91
Utsjoki	517	7,9	41	29	12	0	...	15	15	6	11
Ylitornio	1 471	10,8	159	96	63	...	11	91	50	29	31
Total	81 343	9,3	7 528	4 536	2 988	194	812	3 044	2 472	1 059	3 202





## Information about the website

On this website you will find the latest statistics from ELY Centre for Lapland's monthly Employment Bulletin. You can access a .pdf version of the current and previous months' Employment Bulletin by following the link on the right.

The Employment Bulletin is based on the data from the KEHA Centre's Employment Service Statistics. The Ministry of Economic Affairs and Employment compiles statistics on the clients of the Employment authorities, including registered job-seekers, labour market policy services, and job vacancies. The data is collected from the customer service registries used by the Employment authorities. This means that the data used by MEAE Employment Service Statistics is completely registry-based.

The statistical data covers all persons, services, and open vacancies in the aforementioned groups, as separately defined in the registry by the classifications and variables for the statistical period in question.

Owing to seasonal variations, the Employment Bulletin always includes a comparison with the corresponding month in the previous year. The descriptors used in the Bulletin are also available in a table format. The Employment Bulletins are published at the end of the subsequent calendar month. The official date of publication is announced in advance.

The following symbols have been used:

. Category not applicable

... Data subject to secrecy

Links:

- Employment Service Statistics online:

<https://tyomarkkinatori.fi/en/employment-and-statistics/statistics-and-reports/employment-service-statistics>

- Employment Service Statistics' Release dates, Description and Quality Description:

<https://tyomarkkinatori.fi/en/employment-and-statistics/evaluation-and-research/employment-bulletin/publication-dates-in-2025>

- Employment Service Statistics' statistical database (In Finnish):

<https://www.tyonvalitystilasto.fi>

- You can access key information from Employment Service Statistics by visiting the Statistics Finland's StatFin database:

<https://statfin.stat.fi/PxWeb/pxweb/en/StatFin/>

- Comparison between the statistics of Statistics Finland and Employment Service Statistics:

<https://media.graphassets.com/ibCSU7MzQ5S7MeTqISid?dl=true>

- Comparison between the Job Vacancy Survey of Statistics Finland and Employment Service Statistics:

<https://media.graphcms.com/gipDIzmxSOeUqMECNgGS?dl=true>

Instructions for referencing:

Official Statistics of Finland (OSF): KEHA Centre / Employment Service Statistics. 202Y:MM, Lapland's Employment Bulletin, MONTH 202Y. Rovaniemi: Centre for Economic Development, Transport and the Environment (date of reference). Available at:  
<https://www.tyollisyyskatsaus.fi/lappi.aspx>



## Contact information

Centre for Economic Development, Transport and the Environment for Lapland

Director Marja Perälä, +358 295 037 050

Senior Specialist Tiina Keränen, 0295 037 830

Head of Unit Satu Huikuri, +358 295 037 049

Researcher Tuula Uusipaavalniemi, +358 295 037 142

Information Assistant Satu Takoja, +358 295 037 131

E-mail: [firstname.lastname\(at\)ely-keskus.fi](mailto:firstname.lastname(at)ely-keskus.fi)

<https://www.tyollisyyskatsaus.fi/lappi.aspx>

