



Centre for Economic Development,
Transport and the Environment



TE-palvelut
tjänster | services

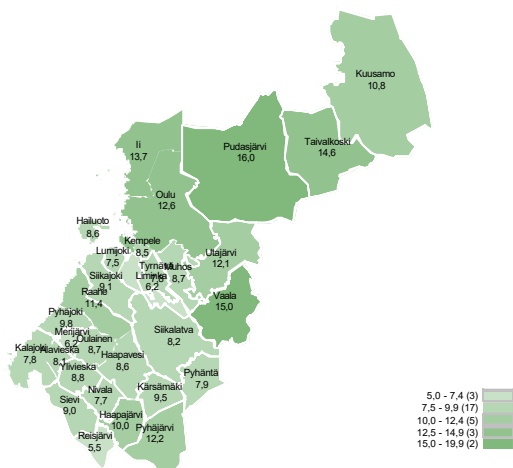
NORTH OSTROBOTHNIA

Employment Bulletin

October 2024

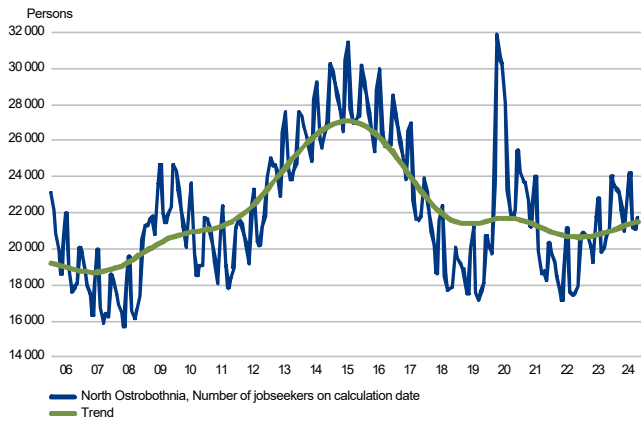
Unemployed jobseeker's percentage of the workforce

Unemployed jobseekers' percentage of the workforce by municipality

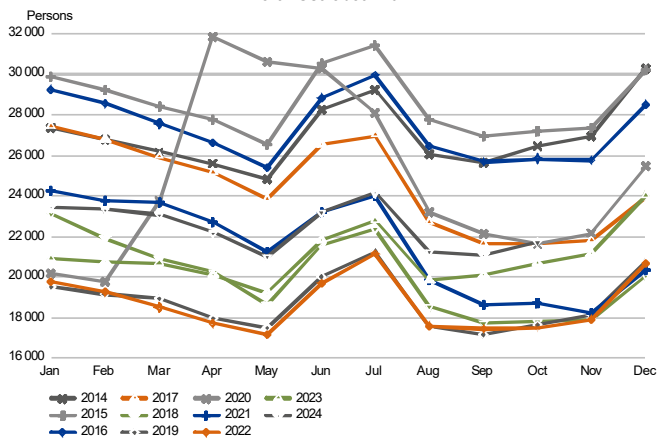


Unemployed jobseekers

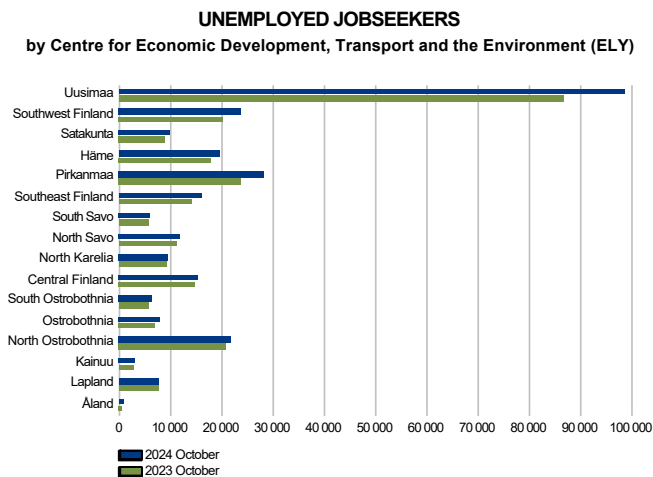
UNEMPLOYED JOBSEEKERS MONTHLY AND TREND
North Ostrobothnia



UNEMPLOYED JOBSEEKERS, MONTH BY MONTH COMPARISON
North Ostrobothnia



Unemployed jobseekers by sub-regional unit



Unemployed jobseekers and jobs vacant in Employment and Economic Development Office by sub-regional unit

Sub-regional unit	Unemployed jobseekers			Change		Of the Unemployed jobseekers'		Jobs vacant			Change	
	Oct 2024	Sep 2024	Oct 2023	Oct 2024 Oct 2023	%	fully laid off	percentage of the workforce	Oct 2024	Sep 2024	Oct 2023	Oct 2024 Oct 2023	%
Oulu	15 020	14 743	14 078	942	7	973	11,8	1 224	1 320	2 130	-906	-43
Oulunkaari	1 309	1 177	1 126	183	16	137	14,4	82	71	93	-11	-12
Raahe	1 449	1 475	1 489	-40	-3	84	10,9	129	192	159	-30	-19
Haapavesi-Siikalatva	459	439	538	-79	-15	63	8,4	47	50	48	-1	-2
Nivala-Haapajärvi	999	930	947	52	5	173	9,0	48	60	125	-77	-62
Ylivieska	1 564	1 473	1 555	9	1	221	8,4	353	344	367	-14	-4
Koillismaa	935	860	918	17	2	111	11,5	185	210	218	-33	-15
North Ostrobothnia	21 735	21 097	20 651	1 084	5	1 762	11,2	2 068	2 247	3 140	-1 072	-34

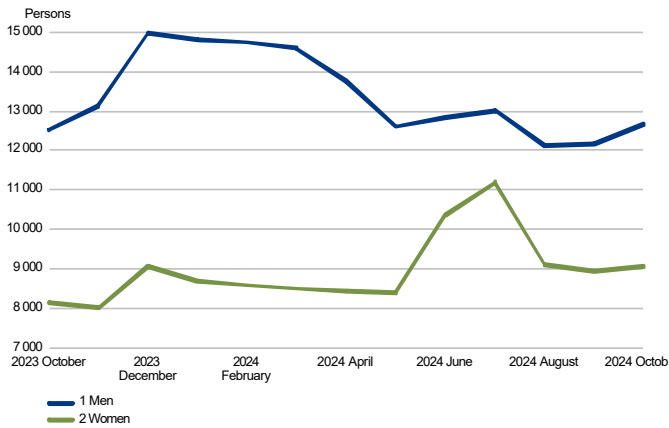
Unemployed jobseekers by municipality

Unemployed jobseekers and jobs vacant in Employment and Economic Development Office by municipality

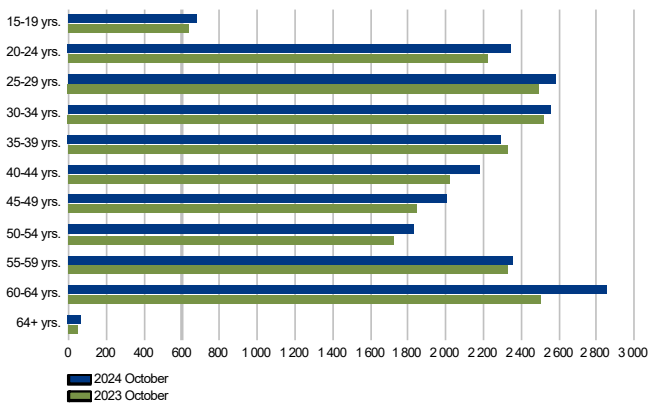
Municipality	Unemployed jobseekers		Change		Of the Unemployed jobseekers' percentage of the fully laid off workforce		Jobs vacant		Change	
	Oct 2024	Sep 2024	Oct 2023	Oct 2024 Oct 2023	unemployed jobseekers	jobseekers' percentage of the workforce	Oct 2024	Sep 2024	Oct 2023	Oct 2024 Oct 2023
Alavieska	86	83	90	-4 -4	9	8,1	8	10	5	3 60
Haapajärvi	287	261	237	50 21	73	10,0	9	21	32	-23 -72
Haapavesi	237	213	211	26 12	32	8,6	14	19	20	-6 -30
Hailuoto	33	35	36	-3 -8	...	8,6	6	19	0	6 0
Ii	579	517	451	128 28	55	13,7	21	18	29	-8 -28
Kalajoki	419	384	451	-32 -7	92	7,8	38	46	48	-10 -21
Kempele	781	731	694	87 13	84	8,5	60	69	78	-18 -23
Kuusamo	709	659	704	5 1	86	10,8	174	202	212	-38 -18
Kärsämäki	93	88	99	-6 -6	15	9,5	15
Liminka	281	286	281	0 0	30	6,2	18	14	38	-20 -53
Lumijoki	63	72	75	-12 -16	9	7,5	0
Merijärvi	26	27	40	-14 -35	...	6,2	...	0
Muhos	340	330	349	-9 -3	47	8,7	24	25	49	-25 -51
Nivala	339	317	317	22 7	51	7,7	27	28	59	-32 -54
Oulainen	252	229	245	7 3	34	8,7	40	39	16	24 150
Oulu	13 303	13 079	12 444	859 7	774	12,6	1 113	1 186	1 942	-829 -43
Pudasjärvi	461	416	429	32 7	50	16,0	35	32	26	9 35
Pyhäjoki	122	125	132	-10 -8	15	9,8	5
Pyhäjärvi	221	208	228	-7 -3	26	12,2	7	...	10	-3 -30
Pyhäntä	51	48	86	-35 -41	12	7,9	23	17	7	16 229
Raahe	1 147	1 168	1 179	-32 -3	60	11,4	110	176	137	-27 -20
Reisjärvi	59	56	66	-7 -11	8	5,5	...	5	9
Sievi	175	161	170	5 3	22	9,0	125	124	48	77 160
Siikajoki	180	182	178	2 1	9	9,1	14	13	20	-6 -30
Siikalatva	171	178	241	-70 -29	19	8,2	10	14	21	-11 -52
Taivalkoski	226	201	214	12 6	25	14,6	11	8	6	5 83
Tyrnävä	219	210	199	20 10	27	7,8	...	6	21
Utajärvi	122	110	109	13 12	7	12,1	5
Vaala	147	134	137	10 7	25	15,0	21	17	35	-14 -40
Ylivieska	606	589	559	47 8	58	8,8	138	125	249	-111 -45
North Ostrobothnia	21 735	21 097	20 651	1 084 5	1 762	11,2	2 068	2 247	3 140	-1 072 -34

Unemployed jobseekers by gender and age-group

UNEMPLOYED JOBSEEKERS BY GENDER
North Ostrobothnia

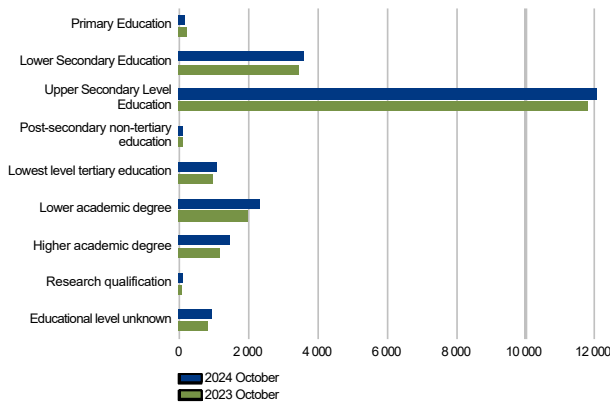


UNEMPLOYED JOBSEEKERS BY AGE GROUP
North Ostrobothnia

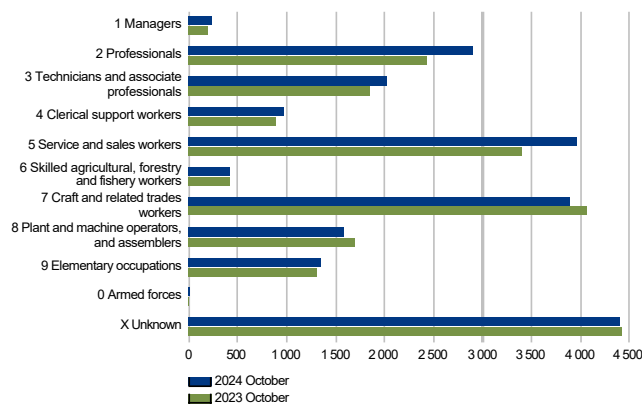


Unemployed jobseekers by levels of education and occupational group

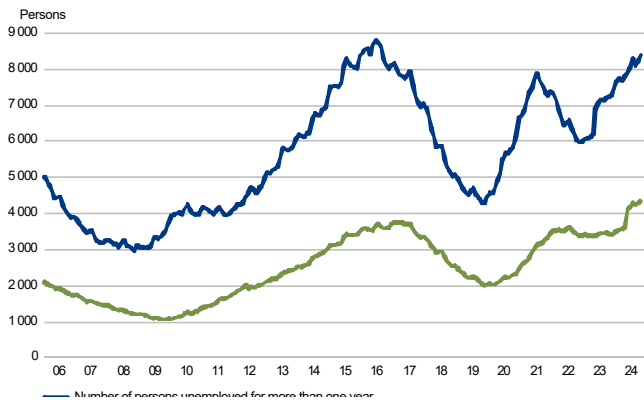
UNEMPLOYED JOBSEEKERS BY LEVEL OF EDUCATION
North Ostrobothnia



UNEMPLOYED JOBSEEKERS BY OCCUPATIONAL GROUP
North Ostrobothnia

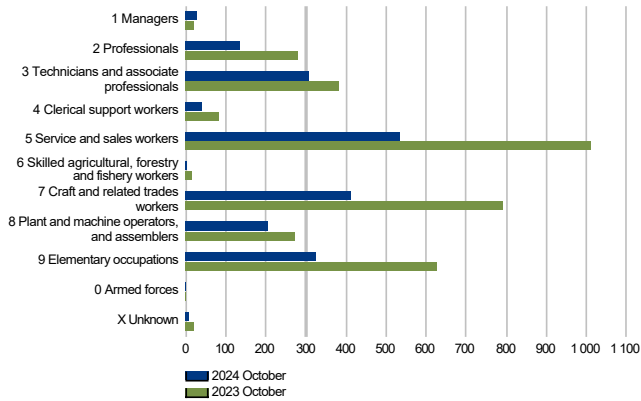


LONG-TERM UNEMPLOYED AT THE END OF THE MONTH
North Ostrobothnia



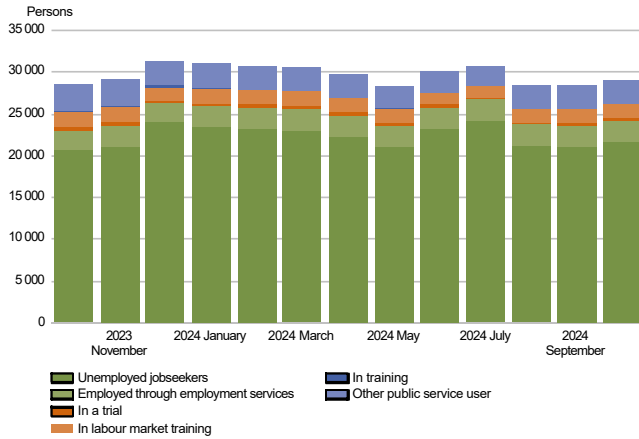
Jobs vacant

NEW JOB VACANCIES
North Ostrobothnia

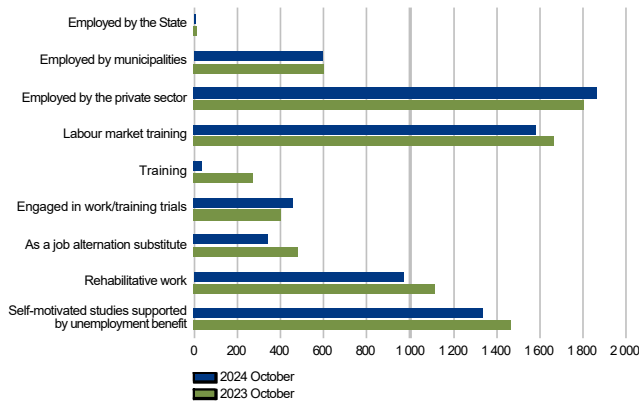


Services

BROAD UNEMPLOYMENT
North Ostrobothnia

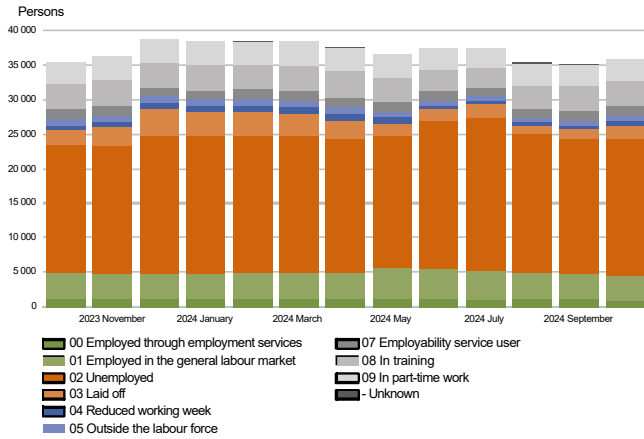


PEOPLE COVERED BY SERVICES
North Ostrobothnia



All jobseekers

JOBSEEKERS BY GROUP
North Ostrobothnia



Summary table

EMPLOYMENT SITUATION AT THE END OF 2024 OCTOBER (I) AND
ACTIVITIES OF EMPLOYMENT AND ECONOMIC DEVELOPMENT OFFICES DURING OCTOBER (II)
ELY CENTRE: NORTH OSTROBOTHNIA

I EMPLOYMENT SITUATION AT THE END OF MONTH	Oct-24	Oct-23	CHANGE NUMBER	CHANGE %
A. JOBSEEKERS				
1. Unemployed jobseekers	21 735	20 651	1 084	5,2
of whom fully laid off	1 762	2 153	-391	-18,2
2. On reduced working week	726	683	43	6,3
3. Those who have work	7 651	8 155	-504	-6,2
of which in full-time work	3 481	3 727	-246	-6,6
of which in part-time work	3 182	3 240	-58	-1,8
of whom employed through employment services	988	1 188	-200	-16,8
4. Persons outside the labour force	5 701	5 958	-257	-4,3
of whom in services promoting employment	1 423	1 382	41	3,0
of whom in training	3 548	3 640	-92	-2,5
1-4 Total of jobseekers	35 813	35 447	366	1,0
B. LABOUR DEMAND				
1. Jobs vacant	2 068	3 140	-1 072	-34,1
of those notified for over a month	1 003	1 103	-100	-9,1
of those notified for over 2 months	448	589	-141	-23,9
C. PARTICIPATING IN SERVICES				
1. Employed by the State	5	17	-12	-70,6
2. Employed by municipalities	595	606	-11	-1,8
3. Employed by the private sector	1 868	1 803	65	3,6
1-3 Total number of employed people	2 468	2 426	42	1,7
4. Labour market training	1 583	1 665	-82	-4,9
5. Training	33	275	-242	-88,0
6. Engaged in work/training trials	458	400	58	14,5
7. As a job alternation substitute	340	482	-142	-29,5
8. Rehabilitative work	967	1 118	-151	-13,5
9. Self-motivated studies supported by unemployment benefit	1 338	1 470	-132	-9,0
1-9 Total number of people participating in services	7 187	7 836	-649	-8,3
D. STRUCTURE OF UNEMPLOYMENT				
1. Unemployed women	9 067	8 132	935	11,5
2. Unemployed men	12 667	12 519	148	1,2
3. Under 25 years old	3 022	2 852	170	6,0
4. Over 50 years old	7 101	6 600	501	7,6
5. Unemployed over a year	8 375	7 244	1 131	15,6
6. Foreign unemployed	1 266	1 206	60	5,0
E. UNEMPLOYMENT SECURITY				
1. Unemployed members of employees' unemployment funds	8 562	8 628	-66	-0,8
II EMPLOYMENT SITUATION DURING THE MONTH				
1. Unemployed jobseekers	23 707	23 524	183	0,8
2. Other jobseekers	13 733	14 128	-395	-2,8
1-2 Total number of jobseekers	37 440	37 652	-212	-0,6
3. Vacancies during a month	4 042	7 116	-3 074	-43,2
New vacancies during a month	1 994	3 494	-1 500	-42,9
Vacancies filled during a month	500	788	-288	-36,5
of those filled with job-seekers at the Employment Service	397	488	-91	-18,6
Vacancies application period ended or sufficient number of applicants	568	2 994	-2 426	-81,0
Vacancies cancelled or could not be filled	1 100	373	727	194,9
4. Started spell of unemployment	3 298	3 952	-654	-16,5
5. Completed spell of unemployment	2 024	3 454	-1 430	-41,4
6. New jobs found through employment services	142	199	-57	-28,6
7. New entrants to labour market training	292	324	-32	-9,9

Foreigners' summary table

FOREIGNERS' EMPLOYMENT SITUATION AT THE END OF 2024 OCTOBER (I) AND
ACTIVITIES OF EMPLOYMENT AND ECONOMIC DEVELOPMENT OFFICES DURING OCTOBER (II)
ELY CENTRE: NORTH OSTROBOTHNIA

I EMPLOYMENT SITUATION AT THE END OF MONTH	Oct-24	Oct-23	CHANGE NUMBER	CHANGE %
A. JOBSEEKERS				
1. Unemployed jobseekers	1 266	1 206	60	5,0
of whom fully laid off	76	82	-6	-7,3
2. On reduced working week	22	28	-6	-21,4
3. Those who have work	519	559	-40	-7,2
of which in full-time work	274	329	-55	-16,7
of which in part-time work	200	178	22	12,4
of whom employed through employment services	45	52	-7	-13,5
4. Persons outside the labour force	1 472	1 402	70	5,0
of whom in services promoting employment	78	79	-1	-1,3
of whom in training	1 311	1 214	97	8,0
1-4 Total of jobseekers	3 279	3 195	84	2,6
C. PARTICIPATING IN SERVICES				
1. Employed by the State	0	0	0	0,0
2. Employed by municipalities	21	24	-3	-12,5
3. Employed by the private sector	96	92	4	4,3
1-3 Total number of employed people	117	116	1	0,9
4. Labour market training	597	562	35	6,2
5. Training	...	81
6. Engaged in work/training trials	61	52	9	17,3
7. As a job alternation substitute	...	5
8. Rehabilitative work	12	18	-6	-33,3
9. Self-motivated studies supported by unemployment benefit	447	512	-65	-12,7
1-9 Total number of people participating in services	1 239	1 346	-107	-7,9
D. STRUCTURE OF UNEMPLOYMENT				
1. Unemployed women	665	646	19	2,9
2. Unemployed men	600	560	40	7,1
3. Under 25 years old	111	94	17	18,1
4. Over 50 years old	278	237	41	17,3
5. Unemployed over a year	293	278	15	5,4
E. UNEMPLOYMENT SECURITY				
1. Unemployed members of employees' unemployment funds	231	209	22	10,5
II EMPLOYMENT SITUATION DURING THE MONTH				
1. Unemployed jobseekers	1 408	1 391	17	1,2
2. Other jobseekers	1 960	1 927	33	1,7
1-2 Total number of jobseekers	3 368	3 318	50	1,5
4. Started spell of unemployment	197	217	-20	-9,2
5. Completed spell of unemployment	144	195	-51	-26,2
6. New jobs found through employment services	9
7. New entrants to labour market training	53	76	-23	-30,3

Regional table

UNEMPLOYED JOBSEEKERS AND JOBS VACANT BY MUNICIPALITY AT THE END OF 2024 OCTOBER
ELY CENTRE: NORTH OSTROBOTHNIA

Municipality	Workforce	Unemployed jobseekers							Disabled and chron. ill	Jobs vacant	
		% of workforce	Total	Men	Women	Under 20 years old	Under 25 years old	Over 50 years old			
Alavieska	1 056	8,1	86	49	37	...	10	31	31	8	8
Haapajärvi	2 870	10,0	287	173	114	6	37	125	78	58	9
Haapavesi	2 767	8,6	237	137	100	6	24	84	60	42	14
Hailuoto	383	8,6	33	20	13	0	...	19	16	8	6
Ii	4 213	13,7	579	311	268	16	58	227	184	112	21
Kalajoki	5 351	7,8	419	235	184	6	39	188	108	48	38
Kempele	9 240	8,5	781	416	365	33	116	273	286	115	60
Kuusamo	6 559	10,8	709	403	306	13	65	303	218	104	174
Kärsämäki	981	9,5	93	66	27	0	...	46	30	21	...
Liminka	4 562	6,2	281	150	131	13	42	82	72	32	18
Lumijoki	842	7,5	63	33	30	...	10	28	15	6	0
Merijärvi	417	6,2	26	17	9	...	5	8	11	5	...
Muhos	3 904	8,7	340	212	128	12	45	107	103	46	24
Nivala	4 424	7,7	339	178	161	8	39	102	99	48	27
Oulainen	2 888	8,7	252	152	100	5	37	86	64	34	40
Oulu	105 881	12,6	13 302	7 807	5 495	427	1 987	3 791	5 648	1 426	1 113
Pudasjärvi	2 874	16,0	461	301	160	9	35	250	180	112	35
Pyhäjoki	1 251	9,8	122	65	57	8	22	48	38	16	5
Pyhäjärvi	1 805	12,2	221	129	92	...	19	95	72	38	7
Pyhäntä	643	7,9	51	29	22	...	10	18	13	5	23
Raahe	10 020	11,4	1 147	637	510	49	194	399	389	199	110
Reisjärvi	1 064	5,5	59	35	24	...	5	31	23	10	...
Sievi	1 949	9,0	175	105	70	6	28	65	61	29	125
Siikajoki	1 972	9,1	180	94	86	6	27	64	57	38	14
Siikalatva	2 087	8,2	171	100	71	...	17	84	69	34	10
Taivalkoski	1 546	14,6	226	148	78	6	18	118	77	28	11
Tyrnävä	2 811	7,8	219	111	108	7	21	82	76	24	...
Utajärvi	1 012	12,1	122	79	43	...	9	68	48	17	5
Vaala	982	15,0	147	110	37	...	9	80	52	25	21
Ylivieska	6 919	8,8	606	365	241	20	88	199	197	74	138
Total	193 273	11,2	21 734	12 667	9 067	678	3 022	7 101	8 375	2 762	2 068

Information about the website

On this website you will find the latest statistics from ELY Centre for North Ostrobothnia's monthly Employment Bulletin. You can access a .pdf version of the current and previous months' Employment Bulletin by following the link on the right.

The Employment Bulletin is based on the data from the MEAE's Employment Service Statistics. The Ministry of Economic Affairs and Employment compiles statistics on the clients of the Employment and economic development offices (TE offices), including registered job-seekers, labour market policy services, and job vacancies reported to TE offices by employers. The data is collected from the customer service registry (URA) used by the TE offices. This means that the data used by MEAE Employment Service Statistics is completely registry-based.

The statistical data covers all persons, services, and open vacancies in the aforementioned groups, as separately defined in the registry by the classifications and variables for the statistical period in question.

Owing to seasonal variations, the Employment Bulletin always includes a comparison with the corresponding month in the previous year. The descriptors used in the Bulletin are also available in a table format. The Employment Bulletins are published at the end of the subsequent calendar month. The official date of publication is announced in advance.

The following symbols have been used:

. Category not applicable

... Data subject to secrecy

Links:

- **Employment Service Statistics online:**
<https://www.tem.fi/en/employment-bulletin-and-employment-service-statistics>
- **Employment Service Statistics' Release dates, Description and Quality Description:**
<https://www.tem.fi/en/release-dates-of-statistics-and-description-and-quality-description>
- **Employment Service Statistics' statistical database (In Finnish):**
<https://www.temtyonvalitystilasto.fi>
- **You can access key information from MEAE's Employment Service Statistics by visiting the Statistics Finland's StatFin database:**
<https://statfin.stat.fi/PxWeb/pxweb/en/StatFin/>
- **The Employment Service Statistics data is also available from the MEAE Publications page (only available in Finnish):**
<https://www.tem.fi/tyopoliittinen-aikakauskirja>
- **Comparison between the statistics of Statistics Finland and the Ministry of Economic Affairs and Employment:**
<https://media.graphassets.com/ibCSU7MzQ5S7MeTqISid?dl=true>

Instructions for referencing:

Official Statistics of Finland (OSF): Ministry of Economic Affairs and Employment / Employment Service Statistics. 201Y:MM, North Ostrobothnia's Employment Bulletin, MONTH 201Y. Oulu: Centre for Economic Development, Transport and the Environment (date of reference). Available at:
<http://www.temtyollisyyskatsaus.fi/pohjois-pohjanmaa.aspx>

Contact information

Centre for Economic Development, Transport and the Environment for North Ostrobothnia

Economic Development, Employment and Competence

Petri Keränen, +358 295 026 727

Eine Kela, +358 295 038 227

Jarkko Pietilä, +358 295 038 116

Katja Pietilä (Statistics), +358 295 038 122

E-mail: [firstname.lastname\(at\)ely-keskus.fi](mailto:firstname.lastname(at)ely-keskus.fi)

North Ostrobothnia's Employment and Economic Development Office

Pirjo Juntunen, +358 295 056 596

Mari Tuomikoski, +358 295 056 801

Marita Rimpeläinen, +358 295 056 713

E-mail: [firstname.lastname\(at\)te-toimisto.fi](mailto:firstname.lastname(at)te-toimisto.fi)

<http://www.temtyollisyyskatsaus.fi/pohjois-pohjanmaa.aspx>

