



Centre for Economic Development,
Transport and the Environment



TE-palvelut
tjänster | services

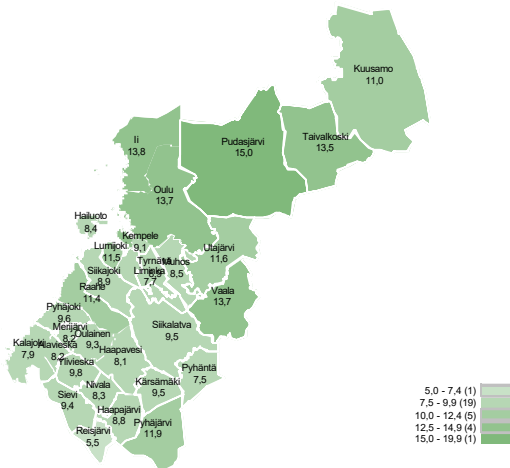
NORTH OSTROBOTHNIA

Employment Bulletin

June 2024

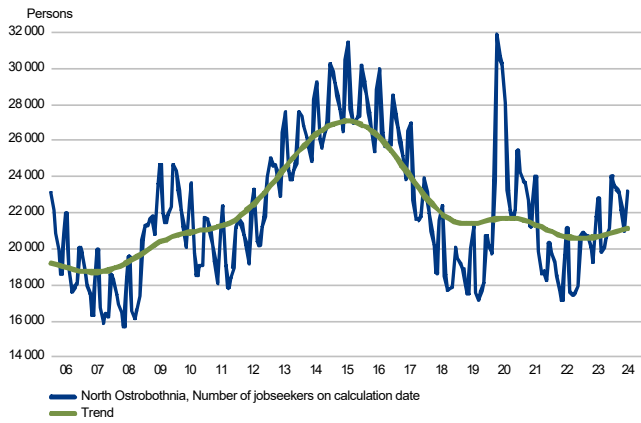
Unemployed jobseeker's percentage of the workforce

Unemployed jobseekers' percentage of the workforce by municipality

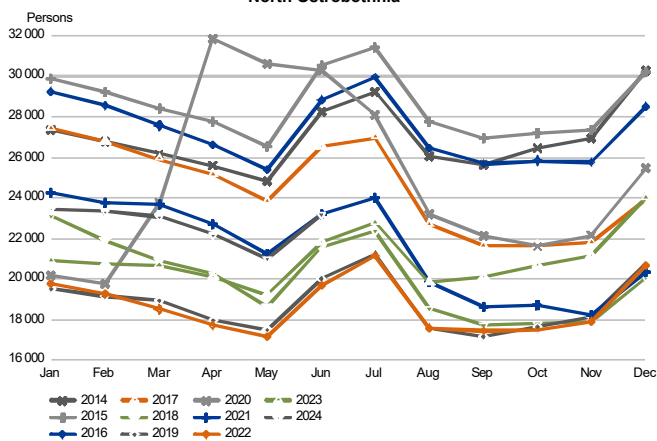


Unemployed jobseekers

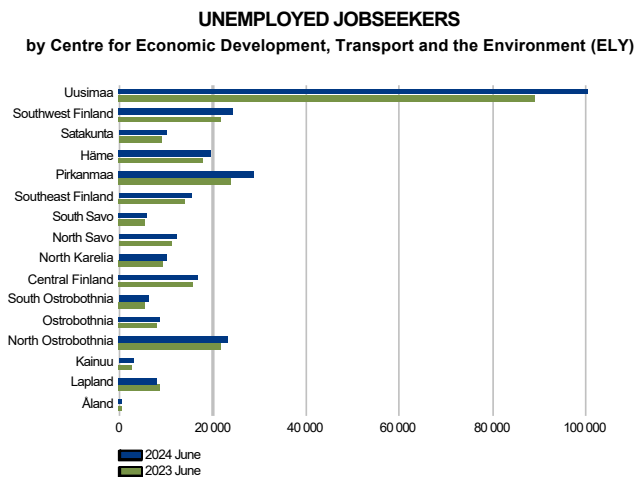
UNEMPLOYED JOBSEEKERS MONTHLY AND TREND
North Ostrobothnia



UNEMPLOYED JOBSEEKERS, MONTH BY MONTH COMPARISON
North Ostrobothnia



Unemployed jobseekers by sub-regional unit



Unemployed jobseekers and jobs vacant in Employment and Economic Development Office by sub-regional unit

Sub-regional unit	Unemployed jobseekers		Change		Of the Unemployed jobseekers'			Jobs vacant		Change		
	Jun 2024	May 2024	Jun 2024	Jun 2023	Change Jun 2024 Jun 2023	unemployed jobseekers fully laid off	percentage of the workforce	Jun 2024	May 2024	Jun 2024	Jun 2023	
Oulu	16 423	14 667	15 397	1 026	7	963	12,9	1 149	1 742	2 419	-1 270	-53
Oulunkaari	1 264	1 190	1 155	109	9	118	13,9	86	113	149	-63	-42
Raahe	1 442	1 318	1 388	54	4	126	10,9	170	175	280	-110	-39
Haapavesi-Siikalatva	470	456	490	-20	-4	45	8,6	46	37	86	-40	-47
Nivala-Haapajärvi	987	889	992	-5	-1	92	8,9	92	98	177	-85	-48
Ylivieska	1 680	1 566	1 570	110	7	208	9,0	224	284	460	-236	-51
Koillismaa	931	908	797	134	17	89	11,5	267	124	318	-51	-16
North Ostrobothnia	23 197	20 994	21 789	1 408	6	1 641	12,0	2 034	2 573	3 889	-1 855	-48

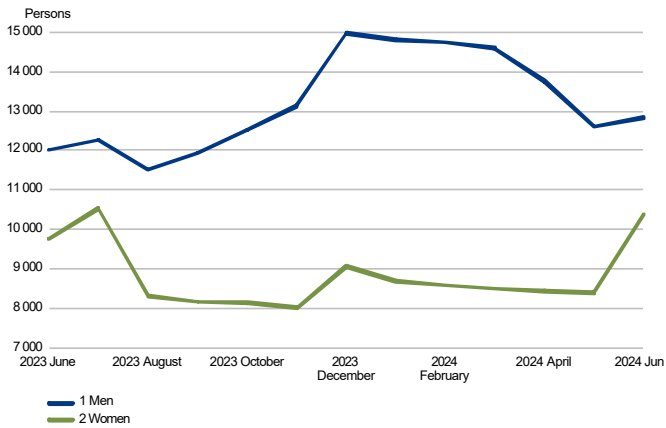
Unemployed jobseekers by municipality

Unemployed jobseekers and jobs vacant in Employment and Economic Development Office by municipality

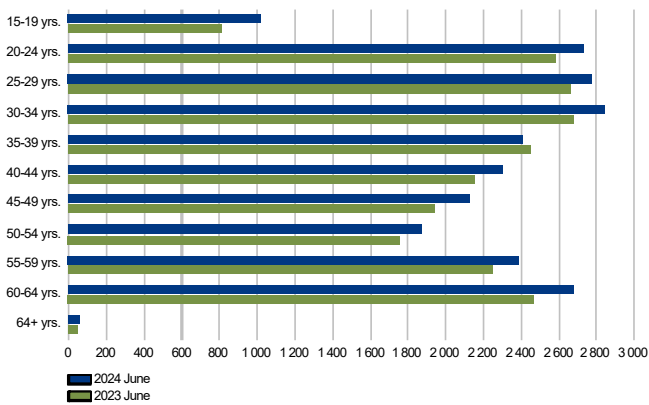
Municipality	Jun 2024	May 2024	Jun 2023	Change Jun 2024 Jun 2023		Of the unemployed jobseekers fully laid off	Unemployed jobseekers' percentage of the workforce	Jun 2024	May 2024	Jun 2023	Change Jun 2024 Jun 2023	
	Unemployed jobseekers				%	%		Jobs vacant				%
Alavieska	87	92	85	2	2	14	8,2	17	14	14	3	21
Haapajärvi	252	223	271	-19	-7	19	8,8	39	30	47	-8	-17
Haapavesi	224	227	238	-14	-6	24	8,1	23	20	45	-22	-49
Hailuoto	32	34	39	-7	-18	...	8,4	6
Ii	581	506	522	59	11	65	13,8	27	43	45	-18	-40
Kalajoki	425	398	404	21	5	77	7,9	62	133	96	-34	-35
Kempele	842	721	788	54	7	66	9,1	57	82	123	-66	-54
Kuusamo	723	697	614	109	18	68	11,0	254	116	271	-17	-6
Kärsämäki	93	86	86	7	8	6	9,5	...	9	33
Liminka	351	265	329	22	7	42	7,7	22	32	35	-13	-37
Lumijoki	97	75	66	31	47	21	11,5	0	...	5	-5	-100
Merijärvi	34	29	43	-9	-21	10	8,2
Muhos	332	305	374	-42	-11	32	8,5	27	27	61	-34	-56
Nivala	369	326	338	31	9	44	8,3	34	44	85	-51	-60
Oulainen	270	250	286	-16	-6	32	9,3	18	35	26	-8	-31
Oulu	14 518	13 057	13 585	933	7	777	13,7	1 031	1 591	2 178	-1 147	-53
Pudasjärvi	431	446	420	11	3	37	15,0	27	34	45	-18	-40
Pyhäjoki	120	119	103	17	17	17	9,6	...	6	7
Pyhäjärvi	215	195	219	-4	-2	18	11,9	8	12	11	-3	-27
Pyhäntä	48	50	58	-10	-17	5	7,5	...	5
Raahe	1 146	1 044	1 093	53	5	92	11,4	158	158	254	-96	-38
Reisjärvi	58	59	78	-20	-26	5	5,5	7
Sievi	184	196	174	10	6	19	9,4	14	21	93	-79	-85
Siikajoki	176	155	192	-16	-8	17	8,9	8	11	19	-11	-58
Siikalatva	198	179	194	4	2	16	9,5	20	12	39	-19	-49
Taivalkoski	208	211	183	25	14	21	13,5	13	8	47	-34	-72
Tyrvävä	251	210	216	35	16	23	8,9	8	6	11	-3	-27
Utajärvi	117	111	90	27	30	...	11,6	12	12	11	1	9
Vaala	135	127	123	12	10	14	13,7	20	24	48	-28	-58
Ylivieska	680	601	578	102	18	56	9,8	110	78	230	-120	-52
North Ostrobothnia	23 197	20 994	21 789	1 408	6	1 641	12,0	2 034	2 573	3 889	-1 855	-48

Unemployed jobseekers by gender and age-group

UNEMPLOYED JOBSEEKERS BY GENDER
North Ostrobothnia

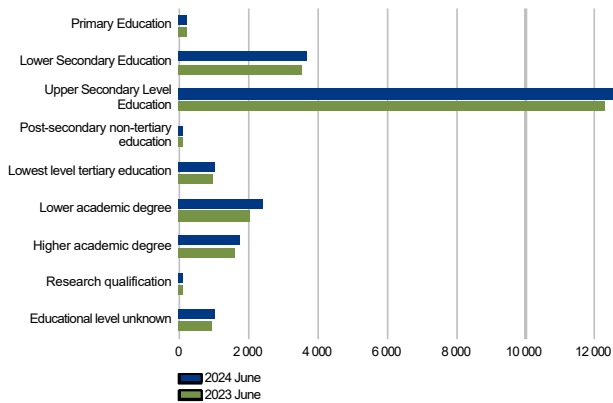


UNEMPLOYED JOBSEEKERS BY AGE GROUP
North Ostrobothnia

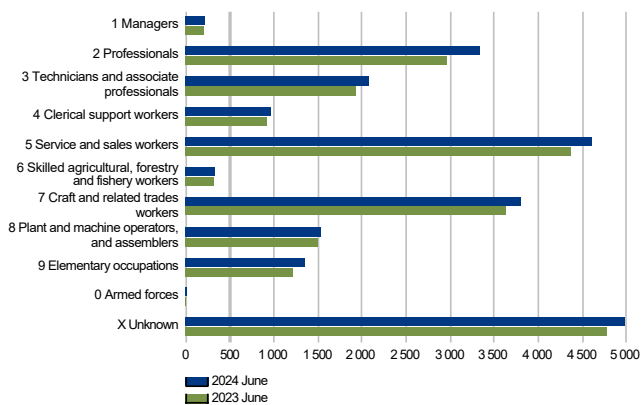


Unemployed jobseekers by levels of education and occupational group

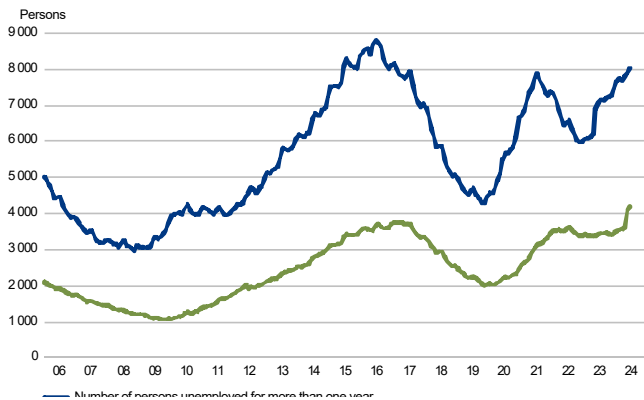
UNEMPLOYED JOBSEEKERS BY LEVEL OF EDUCATION
North Ostrobothnia



UNEMPLOYED JOBSEEKERS BY OCCUPATIONAL GROUP
North Ostrobothnia

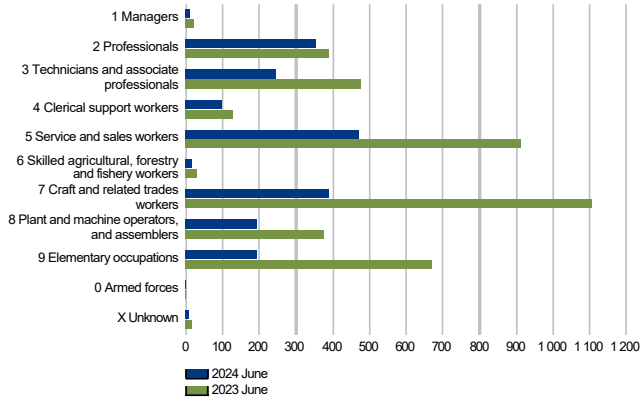


LONG-TERM UNEMPLOYED AT THE END OF THE MONTH
North Ostrobothnia



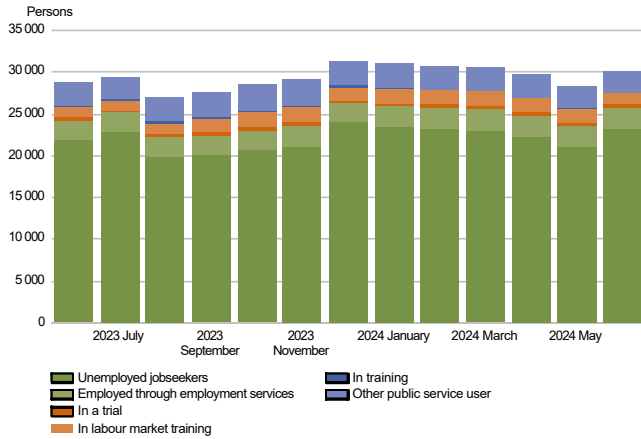
Jobs vacant

NEW JOB VACANCIES
North Ostrobothnia

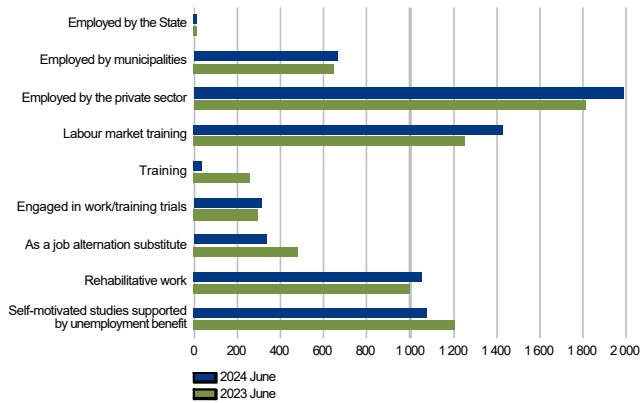


Services

BROAD UNEMPLOYMENT
North Ostrobothnia

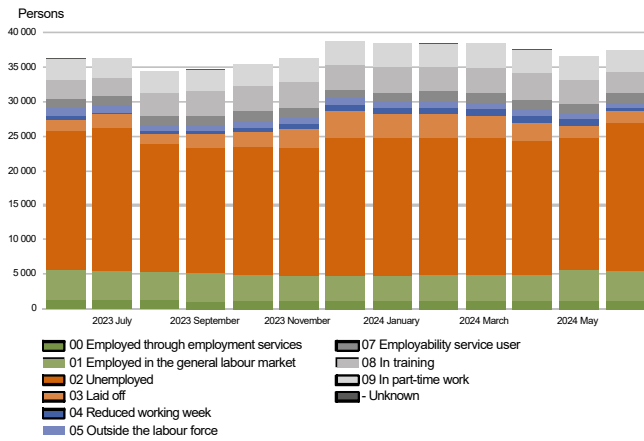


PEOPLE COVERED BY SERVICES
North Ostrobothnia



All jobseekers

JOBSEEKERS BY GROUP
North Ostrobothnia



Summary table

EMPLOYMENT SITUATION AT THE END OF 2024 JUNE (I) AND
ACTIVITIES OF EMPLOYMENT AND ECONOMIC DEVELOPMENT OFFICES DURING JUNE (II)
ELY CENTRE: NORTH OSTROBOTHNIA

I EMPLOYMENT SITUATION AT THE END OF MONTH	Jun-24	Jun-23	CHANGE NUMBER	CHANGE %
A. JOBSEEKERS				
1. Unemployed jobseekers	23 197	21 789	1 408	6,5
of whom fully laid off	1 641	1 661	-20	-1,2
2. On reduced working week	569	452	117	25,9
3. Those who have work	8 525	8 846	-321	-3,6
of which in full-time work	4 242	4 426	-184	-4,2
of which in part-time work	3 107	3 090	17	0,6
of whom employed through employment services	1 176	1 330	-154	-11,6
4. Persons outside the labour force	5 155	5 221	-66	-1,3
of whom in services promoting employment	1 338	1 239	99	8,0
of whom in training	3 047	2 923	124	4,2
1-4 Total of jobseekers	37 446	36 308	1 138	3,1
B. LABOUR DEMAND				
1. Jobs vacant	2 034	3 889	-1 855	-47,7
of those notified for over a month	612	1 325	-713	-53,8
of those notified for over 2 months	282	744	-462	-62,1
C. PARTICIPATING IN SERVICES				
1. Employed by the State	12	14	-2	-14,3
2. Employed by municipalities	661	647	14	2,2
3. Employed by the private sector	1 986	1 810	176	9,7
1-3 Total number of employed people	2 659	2 471	188	7,6
4. Labour market training	1 427	1 256	171	13,6
5. Training	35	261	-226	-86,6
6. Engaged in work/training trials	315	299	16	5,4
7. As a job alternation substitute	332	481	-149	-31,0
8. Rehabilitative work	1 052	997	55	5,5
9. Self-motivated studies supported by unemployment benefit	1 076	1 207	-131	-10,9
1-9 Total number of people participating in services	6 896	6 972	-76	-1,1
D. STRUCTURE OF UNEMPLOYMENT				
1. Unemployed women	10 362	9 763	599	6,1
2. Unemployed men	12 835	12 026	809	6,7
3. Under 25 years old	3 744	3 388	356	10,5
4. Over 50 years old	7 005	6 516	489	7,5
5. Unemployed over a year	8 026	7 076	950	13,4
6. Foreign unemployed	1 442	1 348	94	7,0
E. UNEMPLOYMENT SECURITY				
1. Unemployed members of employees' unemployment funds	9 326	8 876	450	5,1
II EMPLOYMENT SITUATION DURING THE MONTH				
1. Unemployed jobseekers	25 523	23 682	1 841	7,8
2. Other jobseekers	14 291	14 474	-183	-1,3
1-2 Total number of jobseekers	39 814	38 156	1 658	4,3
3. Vacancies during a month	4 304	8 790	-4 486	-51,0
New vacancies during a month	1 979	4 133	-2 154	-52,1
Vacancies filled during a month	391	661	-270	-40,8
of those filled with job-seekers at the Employment Service	326	322	4	1,2
Vacancies application period ended or sufficient number of applicants	1 105	3 893	-2 788	-71,6
Vacancies cancelled or could not be filled	926	416	510	122,6
4. Started spell of unemployment	5 026	5 048	-22	-0,4
5. Completed spell of unemployment	2 736	2 161	575	26,6
6. New jobs found through employment services	238	226	12	5,3
7. New entrants to labour market training	57	51	6	11,8

Foreigners' summary table

FOREIGNERS' EMPLOYMENT SITUATION AT THE END OF 2024 JUNE (I) AND
ACTIVITIES OF EMPLOYMENT AND ECONOMIC DEVELOPMENT OFFICES DURING JUNE (II)
ELY CENTRE: NORTH OSTROBOTHNIA

I EMPLOYMENT SITUATION AT THE END OF MONTH	Jun-24	Jun-23	CHANGE NUMBER	CHANGE %
A. JOBSEEKERS				
1. Unemployed jobseekers	1 442	1 348	94	7,0
of whom fully laid off	77	73	4	5,5
2. On reduced working week	26	16	10	62,5
3. Those who have work	574	615	-41	-6,7
of which in full-time work	347	380	-33	-8,7
of which in part-time work	176	162	14	8,6
of whom employed through employment services	51	73	-22	-30,1
4. Persons outside the labour force	1 252	1 123	129	11,5
of whom in services promoting employment	88	84	4	4,8
of whom in training	1 075	898	177	19,7
1-4 Total of jobseekers	3 294	3 102	192	6,2
C. PARTICIPATING IN SERVICES				
1. Employed by the State	0	0	0	0,0
2. Employed by municipalities	22	33	-11	-33,3
3. Employed by the private sector	101	101	0	0,0
1-3 Total number of employed people	123	134	-11	-8,2
4. Labour market training	581	476	105	22,1
5. Training	...	38
6. Engaged in work/training trials	63	63	0	0,0
7. As a job alternation substitute	6	6	0	0,0
8. Rehabilitative work	18	16	2	12,5
9. Self-motivated studies supported by unemployment benefit	304	353	-49	-13,9
1-9 Total number of people participating in services	1 096	1 086	10	0,9
D. STRUCTURE OF UNEMPLOYMENT				
1. Unemployed women	783	746	37	5,0
2. Unemployed men	659	602	57	9,5
3. Under 25 years old	131	118	13	11,0
4. Over 50 years old	296	269	27	10,0
5. Unemployed over a year	300	270	30	11,1
E. UNEMPLOYMENT SECURITY				
1. Unemployed members of employees' unemployment funds	267	207	60	29,0
II EMPLOYMENT SITUATION DURING THE MONTH				
1. Unemployed jobseekers	1 609	1 492	117	7,8
2. Other jobseekers	1 856	1 732	124	7,2
1-2 Total number of jobseekers	3 465	3 224	241	7,5
4. Started spell of unemployment	285	329	-44	-13,4
5. Completed spell of unemployment	180	159	21	13,2
6. New jobs found through employment services	10	12	-2	-16,7
7. New entrants to labour market training	14	33	-19	-57,6

Regional table

UNEMPLOYED JOBSEEKERS AND JOBS VACANT BY MUNICIPALITY AT THE END OF 2024 JUNE
ELY CENTRE: NORTH OSTROBOTHNIA

Municipality	Workforce	Unemployed jobseekers							Unemployed over a year	Disabled and chron. ill	Jobs vacant
		% of workforce	Total	Men	Women	Under 20 years old	Under 25 years old	Over 50 years old			
Alavieska	1 056	8,2	87	56	31	...	8	27	27	8	17
Haapajärvi	2 870	8,8	252	123	129	9	32	115	68	60	39
Haapavesi	2 767	8,1	224	125	99	9	30	74	57	39	23
Hailuoto	383	8,4	32	17	15	0	...	16	16	7	...
Ii	4 213	13,8	581	340	241	27	79	226	176	103	27
Kalajoki	5 351	7,9	425	220	205	12	44	192	104	45	62
Kempele	9 240	9,1	842	405	437	42	131	256	260	104	57
Kuusamo	6 559	11,0	723	375	348	24	72	292	179	99	254
Kärsämäki	981	9,5	93	57	36	...	14	40	27	20	...
Liminka	4 562	7,7	351	162	189	20	52	89	68	27	22
Lumijoki	842	11,5	97	42	55	5	13	33	19	9	0
Merijärvi	417	8,2	34	20	14	0	...	13	8	6	...
Muhos	3 904	8,5	332	194	138	24	51	99	98	47	27
Nivala	4 424	8,3	369	171	198	12	50	106	95	52	34
Oulainen	2 888	9,3	270	155	115	11	38	91	55	40	18
Oulu	105 881	13,7	14 518	8 174	6 344	671	2 610	3 785	5 530	1 427	1 031
Pudasjärvi	2 874	15,0	431	280	151	11	38	211	165	104	27
Pyhäjoki	1 251	9,6	120	68	52	5	18	44	39	14	...
Pyhäjärvi	1 805	11,9	215	126	89	...	16	97	65	36	8
Pyhäntä	643	7,5	48	28	20	...	6	18	11	6	...
Raahe	10 020	11,4	1 146	596	550	46	169	422	376	196	158
Reisjärvi	1 064	5,5	58	31	27	0	...	32	19	12	7
Sievi	1 949	9,4	184	93	91	6	27	72	61	24	14
Siikajoki	1 972	8,9	176	98	78	8	21	60	56	36	8
Siikalatva	2 087	9,5	198	112	86	...	18	98	54	40	20
Taivalkoski	1 546	13,5	208	122	86	7	23	100	65	27	13
Tyrnävä	2 811	8,9	251	112	139	12	31	75	69	23	8
Utajärvi	1 012	11,6	117	71	46	6	13	63	34	13	12
Vaala	982	13,7	135	96	39	...	13	72	46	22	20
Ylivieska	6 919	9,8	680	366	314	34	119	187	179	75	110
Total	193 273	12,0	23 197	12 835	10 362	1 018	3 744	7 005	8 026	2 721	2 034



Information about the website

On this website you will find the latest statistics from ELY Centre for North Ostrobothnia's monthly Employment Bulletin. You can access a .pdf version of the current and previous months' Employment Bulletin by following the link on the right.

The Employment Bulletin is based on the data from the MEAE's Employment Service Statistics. The Ministry of Economic Affairs and Employment compiles statistics on the clients of the Employment and economic development offices (TE offices), including registered job-seekers, labour market policy services, and job vacancies reported to TE offices by employers. The data is collected from the customer service registry (URA) used by the TE offices. This means that the data used by MEAE Employment Service Statistics is completely registry-based.

The statistical data covers all persons, services, and open vacancies in the aforementioned groups, as separately defined in the registry by the classifications and variables for the statistical period in question.

Owing to seasonal variations, the Employment Bulletin always includes a comparison with the corresponding month in the previous year. The descriptors used in the Bulletin are also available in a table format. The Employment Bulletins are published at the end of the subsequent calendar month. The official date of publication is announced in advance.

The following symbols have been used:

. Category not applicable

... Data subject to secrecy

Links:

- **Employment Service Statistics online:**

<https://www.tem.fi/en/employment-bulletin-and-employment-service-statistics>

- **Employment Service Statistics' Release dates, Description and Quality Description:**

<https://www.tem.fi/en/release-dates-of-statistics-and-description-and-quality-description>

- **You can access key information from MEAE's Employment Service Statistics by visiting the Statistics Finland's StatFin database:**

<https://statfin.stat.fi/PxWeb/pxweb/en/StatFin/>

- **The Employment Service Statistics data is also available from the MEAE Publications page (only available in Finnish):**

<https://www.tem.fi/tyopoliittinen-aikakauskirja>

- **Comparison between the statistics of Statistics Finland and the Ministry of Economic Affairs and Employment:**

<https://media.graphassets.com/ibCSU7MzQ5S7MeTqISid?dl=true>

- **Local government pilots on employment (In Finnish):**

<https://app.powerbi.com/view?r=eyJrIjoizGVhNWM2ZWUtMWwZi00OWJlThIzDYtZmE5NmZiYjRiODI0IiwidCI6ImQ5NTk1MWE2LWRmZDMtNGE3NC05YWJiLWYyYjYjYjg5ZDY3MSIsImMiOjhh9>

Instructions for referencing:

Official Statistics of Finland (OSF): Ministry of Economic Affairs and Employment / Employment Service Statistics. 201Y:MM, North Ostrobothnia's Employment Bulletin, MONTH 201Y. Oulu: Centre for Economic Development, Transport and the Environment (date of reference). Available at: <http://www.temtyollisyyskatsaus.fi/pohjois-pohjanmaa.aspx>

Contact information

Centre for Economic Development, Transport and the Environment for North Ostrobothnia

Economic Development, Employment and Competence

Petri Keränen, +358 295 026 727

Eine Kela, +358 295 038 227

Jarkko Pietilä, +358 295 038 116

Katja Pietilä (Statistics), +358 295 038 122

E-mail: [firstname.lastname\(at\)ely-keskus.fi](mailto:firstname.lastname(at)ely-keskus.fi)

North Ostrobothnia's Employment and Economic Development Office

Pirjo Juntunen, +358 295 056 596

Mari Tuomikoski, +358 295 056 801

Marita Rimpeläinen, +358 295 056 713

E-mail: [firstname.lastname\(at\)te-toimisto.fi](mailto:firstname.lastname(at)te-toimisto.fi)

<http://www.temtyollisyyskatsaus.fi/pohjois-pohjanmaa.aspx>