



Centre for Economic Development,  
Transport and the Environment



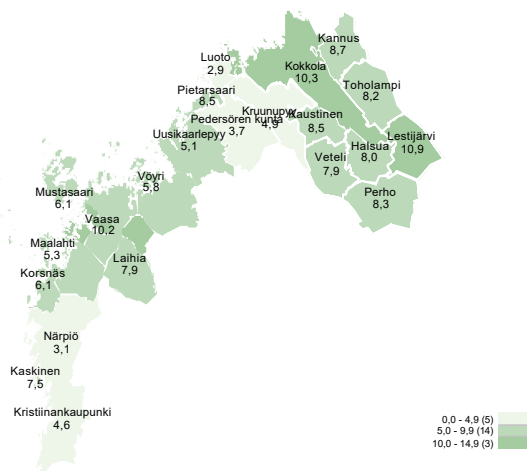
TE-palvelut  
tjänster | services

# THE AREA OF ELY CENTRE FOR OSTROBOTHNIA Employment Bulletin

June 2021

# The unemployment decreased in June in the area of ELY Centre for Ostrobothnia compared with the previous year

Unemployed jobseekers' percentage of the workforce by municipality



A total of 9 148 unemployed jobseekers were registered in the area of ELY Centre for Ostrobothnia at the end of June. This is 5 020 less than the previous year. The amount of unemployed were in June 932 more than the previous month.

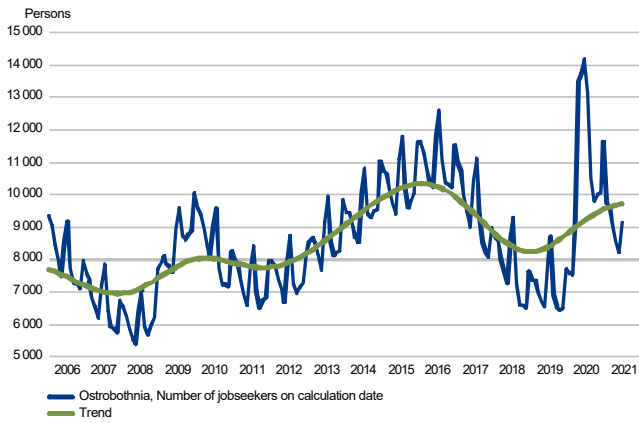
The share of the unemployed jobseekers out of the labour force in the area of ELY Centre for Ostrobothnia is the second lowest (8,1 %) in the mainland Finland. In the whole country the respective share out of the labour force is 12,0 %. Compared with May the unemployment rate increased by 0,8 % in the area of ELY Centre for Ostrobothnia and by 0,6 % in the whole country. The figures are from the Employment Service Statistics of the Ministry of Economic Affairs and Employment.

## Trends:

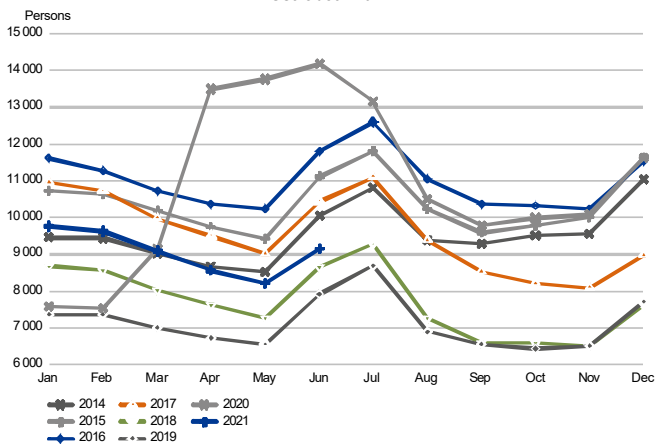
- The amount of unemployed in the area of ELY Centre for Ostrobothnia was in June 5 020 less (- 35,4 %) than the previous year.
- In the end of June, the amount of fulltime laid-off was 885 i.e. 3 900 less than the previous year (- 81,5 %).
- Also, the youth unemployment rate decreased compared with the situation the year before. The amount of unemployed people under 25 years was 875 less compared with the year before (- 42,6 %).
- The amount of long-term unemployed increased by 604 persons compared with the year before (+ 30,2 %).
- The number of new open vacancies in June was 1 406 more (+ 99,1 %) than the previous year.
- The number of people in employment-promoting services increased compared with the year before. In the end of June the amount of participants in services was in total 3 966 persons.

## Unemployed jobseekers

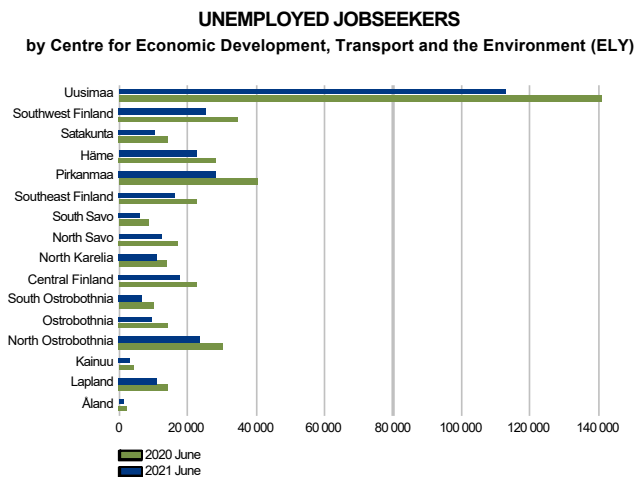
**UNEMPLOYED JOBSEEKERS MONTHLY AND TREND**  
Ostrobothnia



**UNEMPLOYED JOBSEEKERS, MONTH BY MONTH COMPARISON**  
Ostrobothnia



## Unemployed jobseekers by sub-regional unit



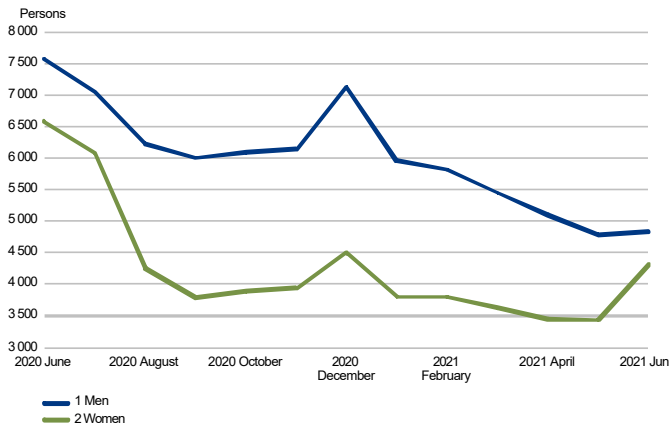
### Unemployed jobseekers and jobs vacant in Employment and Economic Development Office by sub-regional unit

Sub-regional unit	Unemployed jobseekers		Change		Of the Unemployed jobseekers' percentage fully laid off		Jobs vacant		Change			
	Jun 2021	May 2021	Jun 2021	Jun 2020	Jun 2021	Jun 2020	Jun 2021	May 2021	Jun 2021	Jun 2020		
Vaasa	4 556	4 171	7 230	-2 674	-37	501	8,7	1 176	1 228	652	524	80
Suupohjan rannikkoseutu	299	270	539	-240	-45	30	3,9	115	123	43	72	167
Pietarsaari	1 327	1 146	2 540	-1 213	-48	133	5,8	236	284	153	83	54
Kaustinen	520	490	763	-243	-32	59	8,3	106	91	74	32	43
Kokkola	2 446	2 139	3 096	-650	-21	162	10,2	702	749	409	293	72
Ostrobothnia	9 148	8 216	14 168	-5 020	-35	885	8,1	2 335	2 475	1 331	1 004	75

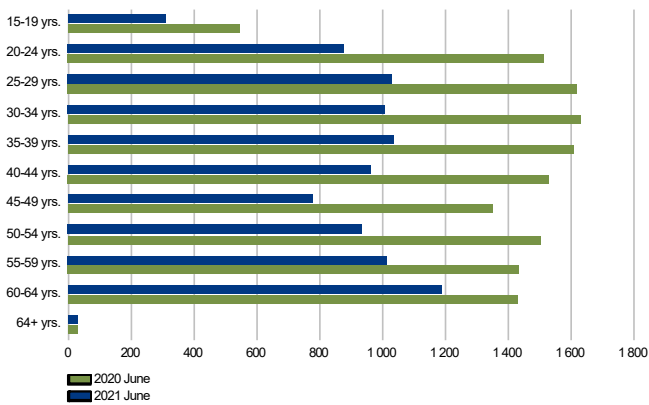


## Unemployed jobseekers by gender and age-group

**UNEMPLOYED JOBSEEKERS BY GENDER**  
Ostrobothnia

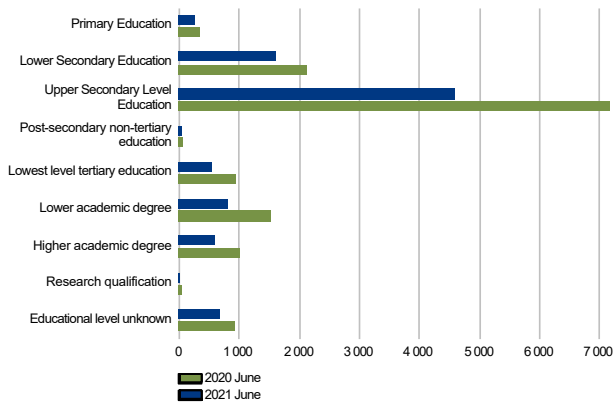


**UNEMPLOYED JOBSEEKERS BY AGE GROUP**  
Ostrobothnia

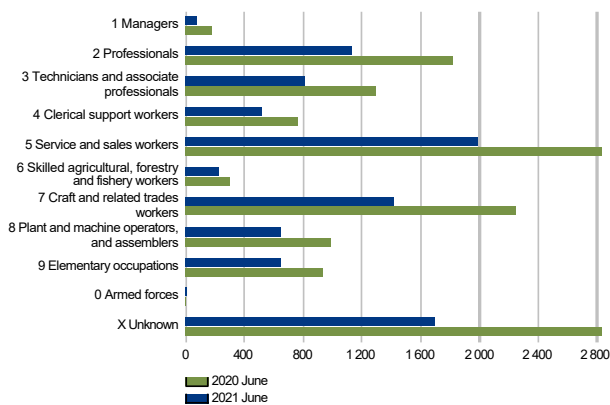


## Unemployed jobseekers by levels of education and occupational group

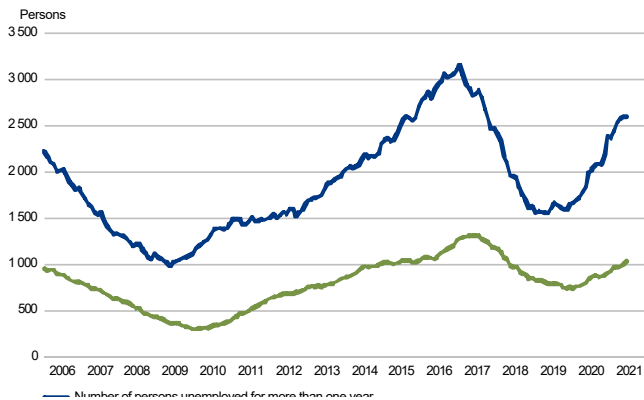
**UNEMPLOYED JOBSEEKERS BY LEVEL OF EDUCATION**  
Ostrobothnia



**UNEMPLOYED JOBSEEKERS BY OCCUPATIONAL GROUP**  
Ostrobothnia

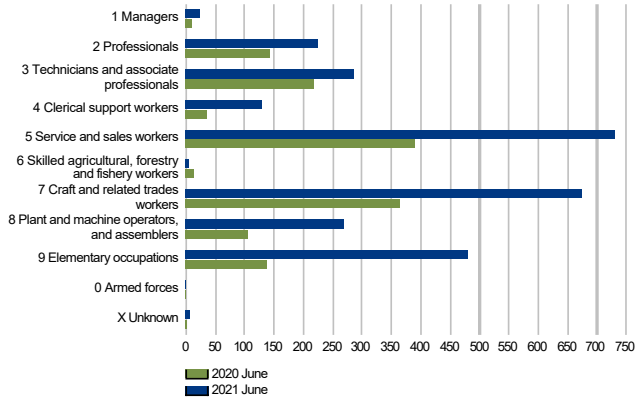


**LONG-TERM UNEMPLOYED AT THE END OF THE MONTH**  
Ostrobothnia



## Jobs vacant

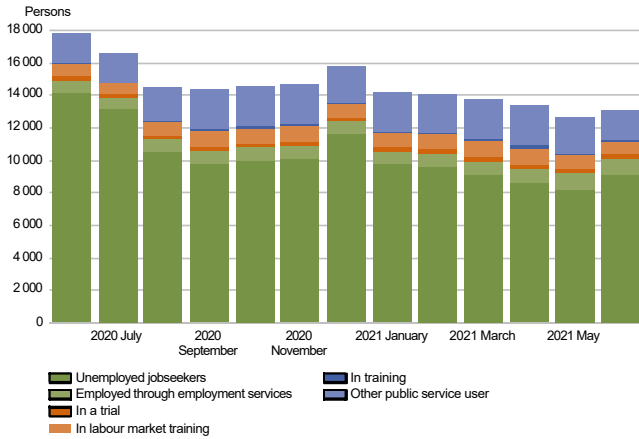
**NEW JOB VACANCIES**  
Ostrobothnia



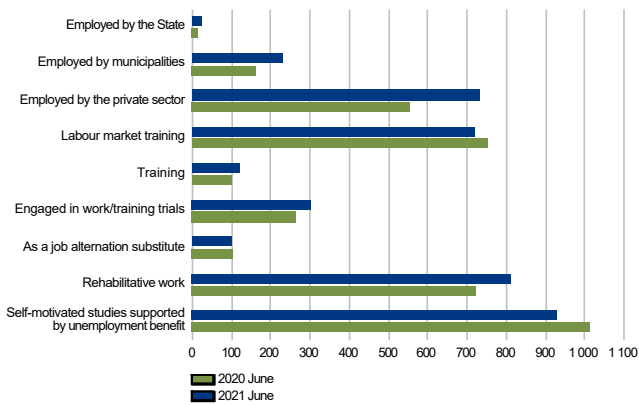


## Services

**BROAD UNEMPLOYMENT**  
Ostrobothnia

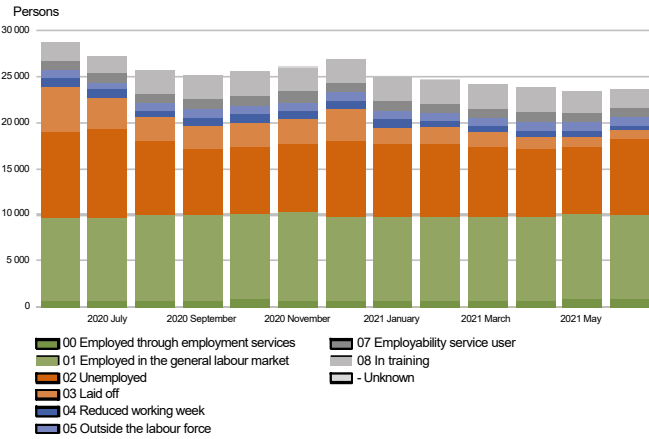


**PEOPLE COVERED BY SERVICES**  
Ostrobothnia



## All jobseekers

**JOBSEEKERS BY GROUP**  
Ostrobothnia



## Summary table

EMPLOYMENT SITUATION AT THE END OF 2021 JUNE (I) AND  
ACTIVITIES OF EMPLOYMENT AND ECONOMIC DEVELOPMENT OFFICES DURING JUNE (II)  
ELY CENTRE: OSTROBOTHNIA

I EMPLOYMENT SITUATION AT THE END OF MONTH	Jun-21	Jun-20	CHANGE NUMBER	CHANGE %
<b>A. JOBSEEKERS</b>				
1. Unemployed jobseekers	9 148	14 168	-5 020	-35,4
of whom fully laid off	885	4 785	-3 900	-81,5
2. On reduced working week	622	1 021	-399	-39,1
3. Those who have work	9 990	9 666	324	3,4
of whom in the general labour market	9 223	8 998	225	2,5
of whom employed through employment services	767	668	99	14,8
4. Persons outside the labour force	3 797	3 855	-58	-1,5
of whom in services promoting employment	1 089	984	105	10,7
of whom in training	1 827	1 999	-172	-8,6
<b>1-4 Total of jobseekers</b>	<b>23 557</b>	<b>28 710</b>	<b>-5 153</b>	<b>-17,9</b>
<b>B. LABOUR DEMAND</b>				
1. Jobs vacant	2 335	1 331	1 004	75,4
of those notified for over a month	820	621	199	32,0
of those notified for over 2 months	516	476	40	8,4
<b>C. PARTICIPATING IN SERVICES</b>				
1. Employed by the State	22	16	6	37,5
2. Employed by municipalities	231	165	66	40,0
3. Employed by the private sector	731	553	178	32,2
<b>1-3 Total number of employed people</b>	<b>984</b>	<b>734</b>	<b>250</b>	<b>34,1</b>
4. Labour market training	720	752	-32	-4,3
5. Training	122	98	24	24,5
6. Engaged in work/training trials	301	266	35	13,2
7. As a job alternation substitute	100	105	-5	-4,8
8. Rehabilitative work	811	724	87	12,0
9. Self-motivated studies supported by unemployment benefit	928	1 013	-85	-8,4
<b>1-9 Total number of people participating in services</b>	<b>3 966</b>	<b>3 692</b>	<b>274</b>	<b>7,4</b>
<b>D. STRUCTURE OF UNEMPLOYMENT</b>				
1. Unemployed women	4 313	6 590	-2 277	-34,6
2. Unemployed men	4 835	7 578	-2 743	-36,2
3. Under 25 years old	1 180	2 055	-875	-42,6
4. Over 50 years old	3 161	4 387	-1 226	-27,9
5. Unemployed over a year	2 601	1 997	604	30,2
6. Foreign unemployed	1 233	1 526	-293	-19,2
<b>E. UNEMPLOYMENT SECURITY</b>				
1. Unemployed members of employees' unemployment funds	3 840	6 897	-3 057	-44,3
<b>II EMPLOYMENT SITUATION DURING THE MONTH</b>				
1. Unemployed jobseekers	10 138	17 183	-7 045	-41,0
2. Other jobseekers	14 248	14 281	-33	-0,2
<b>1-2 Total number of jobseekers</b>	<b>24 386</b>	<b>31 464</b>	<b>-7 078</b>	<b>-22,5</b>
3. Vacancies during a month	5 147	2 880	2 267	78,7
New vacancies during a month	2 825	1 419	1 406	99,1
Vacancies filled during a month	339	268	71	26,5
of those filled with job-seekers at the Employment Service	72	93	-21	-22,6
Vacancies application period ended or sufficient number of applicants	2 414	1 242	1 172	94,4
Vacancies cancelled or could not be filled	101	70	31	44,3
4. Started spell of unemployment	2 535	4 698	-2 163	-46,0
5. Completed spell of unemployment	1 337	3 769	-2 432	-64,5
6. New jobs found through employment services	112	119	-7	-5,9
7. New entrants to labour market training	37	91	-54	-59,3

## Foreigners' summary table

FOREIGNERS' EMPLOYMENT SITUATION AT THE END OF 2021 JUNE (I) AND  
ACTIVITIES OF EMPLOYMENT AND ECONOMIC DEVELOPMENT OFFICES DURING JUNE (II)  
ELY CENTRE: OSTROBOTHNIA

I EMPLOYMENT SITUATION AT THE END OF MONTH	Jun-21	Jun-20	CHANGE NUMBER	CHANGE %
<b>A. JOBSEEKERS</b>				
1. Unemployed jobseekers	1 233	1 526	-293	-19,2
of whom fully laid off	89	301	-212	-70,4
2. On reduced working week	52	87	-35	-40,2
3. Those who have work	1 072	963	109	11,3
of whom in the general labour market	1 009	891	118	13,2
of whom employed through employment services	63	72	-9	-12,5
4. Persons outside the labour force	974	996	-22	-2,2
of whom in services promoting employment	216	165	51	30,9
of whom in training	629	726	-97	-13,4
<b>1-4 Total of jobseekers</b>	<b>3 331</b>	<b>3 572</b>	<b>-241</b>	<b>-6,7</b>
<b>C. PARTICIPATING IN SERVICES</b>				
1. Employed by the State	...	...	...	...
2. Employed by municipalities	24	18	6	33,3
3. Employed by the private sector	43	56	-13	-23,2
<b>1-3 Total number of employed people</b>	<b>68</b>	<b>75</b>	<b>-7</b>	<b>-9,3</b>
4. Labour market training	266	290	-24	-8,3
5. Training	44	11	33	300,0
6. Engaged in work/training trials	121	97	24	24,7
7. As a job alternation substitute	...	...	...	...
8. Rehabilitative work	78	64	14	21,9
9. Self-motivated studies supported by unemployment benefit	374	440	-66	-15,0
<b>1-9 Total number of people participating in services</b>	<b>955</b>	<b>980</b>	<b>-25</b>	<b>-2,6</b>
<b>D. STRUCTURE OF UNEMPLOYMENT</b>				
1. Unemployed women	613	765	-152	-19,9
2. Unemployed men	620	761	-141	-18,5
3. Under 25 years old	154	215	-61	-28,4
4. Over 50 years old	258	279	-21	-7,5
5. Unemployed over a year	182	127	55	43,3
<b>E. UNEMPLOYMENT SECURITY</b>				
1. Unemployed members of employees' unemployment funds	253	344	-91	-26,5
<b>II EMPLOYMENT SITUATION DURING THE MONTH</b>				
1. Unemployed jobseekers	1 402	1 757	-355	-20,2
2. Other jobseekers	2 013	1 967	46	2,3
<b>1-2 Total number of jobseekers</b>	<b>3 415</b>	<b>3 724</b>	<b>-309</b>	<b>-8,3</b>
4. Started spell of unemployment	401	410	-9	-2,2
5. Completed spell of unemployment	216	307	-91	-29,6
6. New jobs found through employment services	8	15	-7	-46,7
7. New entrants to labour market training	21	47	-26	-55,3

## Regional table

UNEMPLOYED JOBSEEKERS AND JOBS VACANT BY MUNICIPALITY AT THE END OF 2021 JUNE  
ELY CENTRE: OSTROBOTHNIA

Municipality	Workforce	Unemployed jobseekers							Disabled and chron. ill	Jobs vacant	
		% of workforce	Total	Men	Women	Under 20 years old	Under 25 years old	Over 50 years old			
Halsua	465	8,0	37	26	11	0	...	21	18	8	...
Kannus	2 410	8,7	209	109	100	5	33	76	52	28	37
Kaskinen	479	7,5	36	21	15	...	...	16	9	...	7
Kaustinen	1 978	8,5	168	73	95	6	19	66	42	46	60
Kokkola	21 688	10,3	2 237	1 143	1 094	78	343	671	649	356	665
Korsnäs	966	6,1	59	29	30	0	...	25	8	5	...
Kristiinankaupunki	2 694	4,6	124	68	56	...	10	47	20	19	43
Kruunupyy	2 977	4,9	145	59	86	...	16	63	37	15	14
Laihia	3 649	7,9	288	141	147	10	27	138	80	74	24
Lestijärvi	285	10,9	31	13	18	...	...	8	7	...	9
Luoto	2 435	2,9	70	26	44	...	8	22	13	7	7
Maalahti	2 602	5,3	139	82	57	...	15	57	55	13	...
Mustasaari	9 372	6,1	568	252	316	12	51	216	143	45	58
Närpiö	4 461	3,1	139	70	69	...	7	61	27	18	65
Pedersören kunta	5 297	3,7	196	87	109	11	32	71	48	26	13
Perho	1 000	8,3	83	34	49	...	8	29	20	10	17
Pietarsaari	8 687	8,5	742	398	344	18	96	282	198	74	164
Toholampi	1 190	8,2	97	55	42	...	9	43	25	10	...
Uusikaarlepyy	3 400	5,1	174	70	104	...	16	48	39	7	38
Vaasa	32 687	10,2	3 332	1 933	1 399	116	439	1 092	1 034	327	1 075
Veteli	1 313	7,9	104	46	58	...	10	42	27	18	12
Vöyri	2 925	5,8	170	100	70	20	31	67	50	17	15
Total	112 960	8,1	9 148	4 835	4 313	307	1 180	3 161	2 601	1 131	2 335



## Information about the website

On this website you will find the latest statistics from ELY Centre for Ostrobothnia's monthly Employment Bulletin. You can access a .pdf version of the current and previous months' Employment Bulletin by following the link on the right. The Employment Bulletin is based on the data from the MEAE's Employment Service Statistics. The Ministry of Economic Affairs and Employment compiles statistics on the clients of the Employment and economic development offices (TE offices), including registered job-seekers, labour market policy services, and job vacancies reported to TE offices by employers. The data is collected from the customer service registry (URA) used by the TE offices. This means that the data used by MEAE Employment Service Statistics is completely registry-based. The statistical data covers all persons, services, and open vacancies in the aforementioned groups, as separately defined in the registry by the classifications and variables for the statistical period in question.

Owing to seasonal variations, the Employment Bulletin always includes a comparison with the corresponding month in the previous year. The descriptors used in the Bulletin are also available in a table format. The Employment Bulletins are published at the end of the subsequent calendar month. The official date of publication is announced in advance.

The following symbols have been used:

. Category not applicable

... Data subject to secrecy

### Links:

- **Employment Service Statistics online:**  
<http://www.tem.fi/en/employment-bulletin-and-employment-service-statistics>
- **Employment Service Statistics, Release dates of statistics, Description and Quality Description**  
<http://www.tem.fi/en/release-dates-of-statistics-and-description-and-quality-description>
- **You can access key information from MEAE's Employment Service Statistics by visiting the Statistics Finland's StatFin database:**  
[https://pxnet2.stat.fi/PXWeb/pxweb/en/StatFin/StatFin\\_\\_tym\\_\\_tyonv/](https://pxnet2.stat.fi/PXWeb/pxweb/en/StatFin/StatFin__tym__tyonv/)
- **The Employment Service Statistics data is also available from the MEAE Publications page (only available in Finnish).**  
<http://www.tem.fi/tyopoliittinen-aikakauskirja>
- **Joint monthly report from MEAE and Statistics Finland**  
[http://www.tilastokeskus.fi/til/tyti/tie\\_en.html](http://www.tilastokeskus.fi/til/tyti/tie_en.html)
- **Comparison between the statistics of Statistics Finland and the Ministry of Economic Affairs and Employment**  
[http://www.tilastokeskus.fi/til/tyti/tyti\\_2015-04-28\\_men\\_001\\_en.html](http://www.tilastokeskus.fi/til/tyti/tyti_2015-04-28_men_001_en.html)

### Instructions for referencing:

Official Statistics of Finland (OSF): Ministry of Economic Affairs and Employment / Employment Service Statistics. 201Y:MM, Ostrobothnia's Employment Bulletin, MONTH 201Y. Vaasa: Centre for Economic Development, Transport and the Environment (date of reference). Available at:  
<http://www.temtyollisyyskatsaus.fi/pohjanmaa.aspx>

## Contact information

### **TE Office for Ostrobothnia**

Mika Palosaari, Director

0295 056 150 mika.palosaari(at)te-toimisto.fi

### **Center for Economic Development, Transport and the Environment for Ostrobothnia**

Hanna Auronen, Head of Unit, Employment and Competence

0295 028 539 hanna.auronen(at)ely-keskus.fi

Timo Saari, Director General

0295 028 501 timo.saari(at)ely-keskus.fi

Meeri Koski, Coordinator, (compiled by)

0295 028 686 meeri.koski(at)ely-keskus.fi

<http://www.temtyollisyyskatsaus.fi/pohjanmaa.aspx>