



Centre for Economic Development,  
Transport and the Environment



TE-palvelut  
tjänster | services

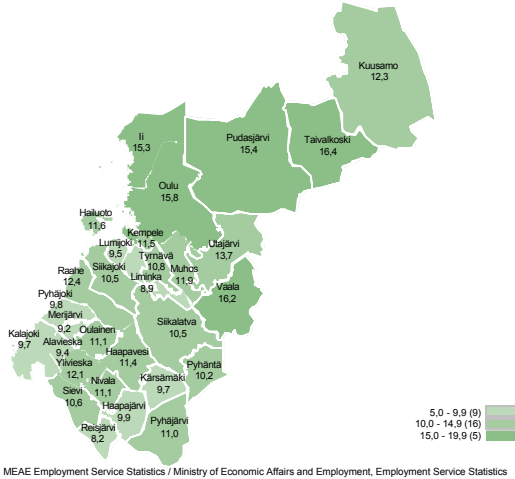
NORTH OSTROBOTHNIA

# Employment Bulletin

September 2016

## Unemployed jobseeker's percentage of the workforce

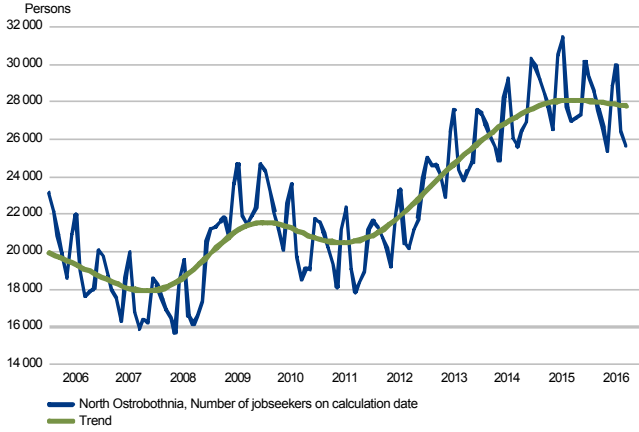
Unemployed jobseekers' percentage of the workforce by municipality



MEAE Employment Service Statistics / Ministry of Economic Affairs and Employment, Employment Service Statistics

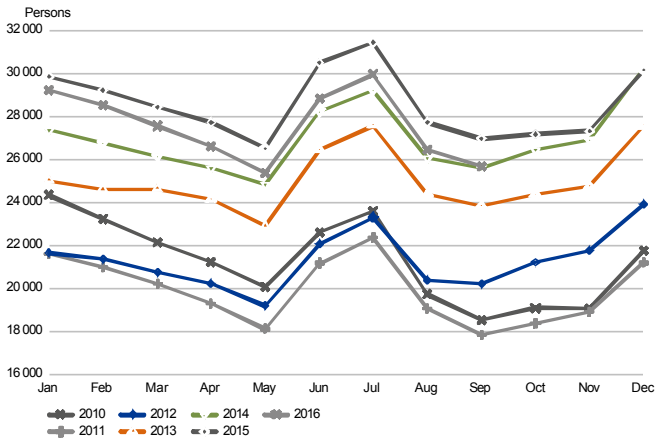
## Unemployed jobseekers

**UNEMPLOYED JOBSEEKERS MONTHLY AND TREND**  
North Ostrobothnia



MEAE Employment Service Statistics / Ministry of Economic Affairs and Employment, Employment Service Statistics

**UNEMPLOYED JOBSEEKERS, MONTH BY MONTH COMPARISON**  
North Ostrobothnia

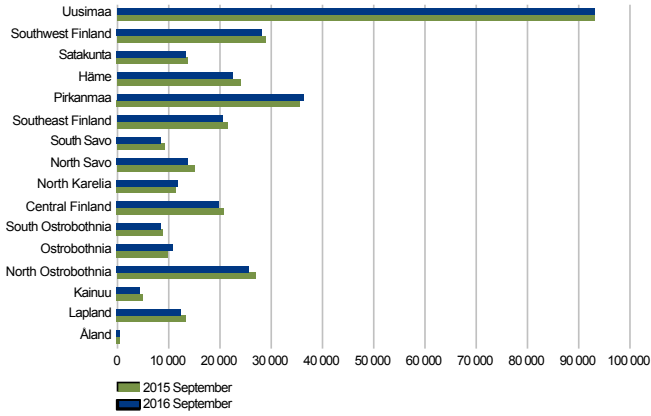


MEAE Employment Service Statistics / Ministry of Economic Affairs and Employment, Employment Service Statistics

## Unemployed jobseekers by sub-regional unit

### UNEMPLOYED JOBSEEKERS

by Centre for Economic Development, Transport and the Environment (ELY)



MEAE Employment Service Statistics / Ministry of Economic Affairs and Employment, Employment Service Statistics

### Unemployed jobseekers and jobs vacant in Employment and Economic Development Office by sub-regional unit

Sub-regional unit	Unemployed jobseekers			Change		Of the fully laid off	Unemployed jobseekers' percentage of the workforce	Jobs vacant			Change	
	Sep 2016	Aug 2016	Sep 2015	Sep 2016 Sep 2015	%			Sep 2016	Aug 2016	Sep 2015	Sep 2016 Sep 2015	%
Oulu	17 311	17 912	17 856	-545	-3	630	14,9	1 440	1 443	1 073	367	34
Oulunkaari	1 480	1 524	1 590	-110	-7	76	15,2	81	98	76	5	7
Raahe	1 723	1 664	1 832	-109	-6	129	11,9	209	134	142	67	47
Haapavesi-Siikalatva	668	693	729	-61	-8	42	10,9	42	45	46	-4	-9
Nivala-Haapajärvi	1 265	1 326	1 431	-166	-12	119	10,4	45	78	48	-3	-6
Ylivieska	2 103	2 139	2 263	-160	-7	149	10,9	139	172	133	6	5
Koillismaa	1 141	1 203	1 270	-129	-10	69	13,1	171	125	240	-69	-29
North Ostrobothnia	25 691	26 461	26 971	-1 280	-5	1 214	13,8	2 127	2 095	1 758	369	21

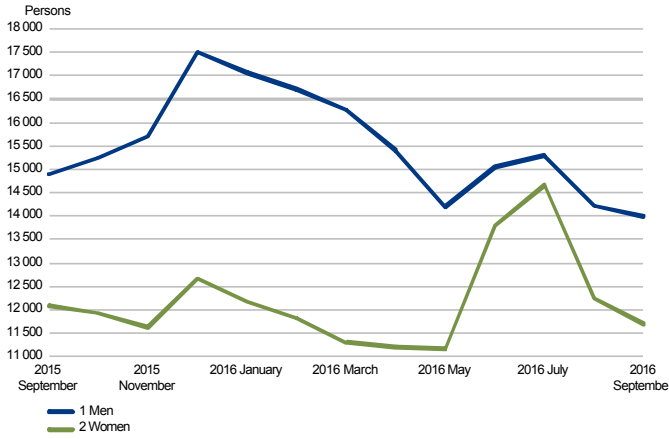
## Unemployed jobseekers by municipality

## Unemployed jobseekers and jobs vacant in Employment and Economic Development Office by municipality

Municipality	Sep 2016	Aug 2016	Sep 2015	Change		Of the unemployed jobseekers fully laid off	Unemployed jobseekers' percentage of the workforce	Sep 2016	Aug 2016	Sep 2015	Change	
				Sep 2016 Sep 2015	%						Sep 2016 Sep 2015	%
	Unemployed jobseekers								Jobs vacant			
Alavieska	108	120	140	-32	-23	6	9,4	..	..	..	..	..
Haapajärvi	311	332	336	-25	-7	26	9,9	20	27	8	12	150
Haapavesi	348	381	374	-26	-7	28	11,4	19	11	25	-6	-24
Hailuoto	46	48	49	-3	-6	..	11,6	..	5	..	..	..
Ii	632	658	682	-50	-7	46	15,3	33	30	18	15	83
Kalajoki	548	546	577	-29	-5	51	9,7	19	28	20	-1	-5
Kempele	928	956	977	-49	-5	52	11,5	53	54	43	10	23
Kuusamo	855	914	970	-115	-12	61	12,3	163	101	229	-66	-29
Kärsämäki	106	114	127	-21	-17	8	9,7	6	..	5	1	20
Liminka	374	397	398	-24	-6	28	8,9	14	24	13	1	8
Lumijoki	78	91	80	-2	-2	5	9,5	..	..	..	..	..
Merijärvi	41	47	40	1	3	..	9,2	0	..	16	-16	-100
Muhos	466	479	510	-44	-9	17	11,9	13	37	19	-6	-32
Nivala	507	518	568	-61	-11	49	11,1	15	28	17	-2	-12
Oulainen	360	379	417	-57	-14	27	11,1	24	24	11	13	118
Oulu	15 112	15 644	15 515	-403	-3	511	15,8	1 351	1 309	985	366	37
Pudasjärvi	494	514	534	-40	-7	21	15,4	36	54	42	-6	-14
Pyhäjoki	133	133	145	-12	-8	12	9,8	22	25	18	4	22
Pyhäjärvi	243	267	302	-59	-20	18	11,0	..	17	15	..	..
Pyhäntä	68	61	60	8	13	..	10,2	..	20	10	..	..
Raahe	1 353	1 289	1 442	-89	-6	100	12,4	179	97	115	64	56
Reisjärvi	98	95	98	0	0	18	8,2	..	..	..	..	..
Sievi	212	212	235	-23	-10	14	10,6	12	28	21	-9	-43
Siikajoki	237	242	245	-8	-3	17	10,5	8	12	9	-1	-11
Siikalatva	252	251	295	-43	-15	11	10,5	21	14	11	10	91
Taivalkoski	286	289	300	-14	-5	8	16,4	8	24	11	-3	-27
Tyrnävä	307	297	327	-20	-6	14	10,8	5	13	6	-1	-17
Utajärvi	160	162	167	-7	-4	..	13,7	..	8	12	..	..
Vaala	194	190	207	-13	-6	5	16,2	8	6	..	..	..
Ylivieska	834	835	854	-20	-2	48	12,1	80	89	63	17	27
North Ostrobothnia	25 691	26 461	26 971	-1 280	-5	1 214	13,8	2 127	2 095	1 758	369	21

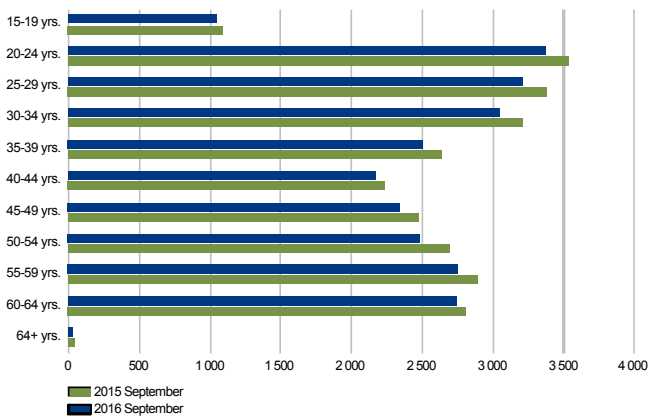
## Unemployed jobseekers by gender and age-group

**UNEMPLOYED JOBSEEKERS BY GENDER**  
North Ostrobothnia



MEAE Employment Service Statistics / Ministry of Economic Affairs and Employment, Employment Service Statistics

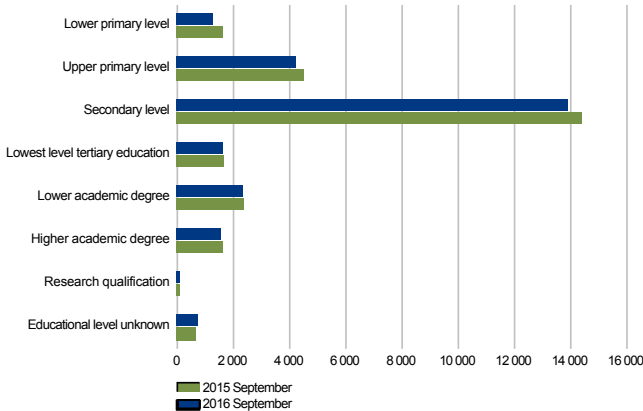
**UNEMPLOYED JOBSEEKERS BY AGE GROUP**  
North Ostrobothnia



MEAE Employment Service Statistics / Ministry of Economic Affairs and Employment, Employment Service Statistics

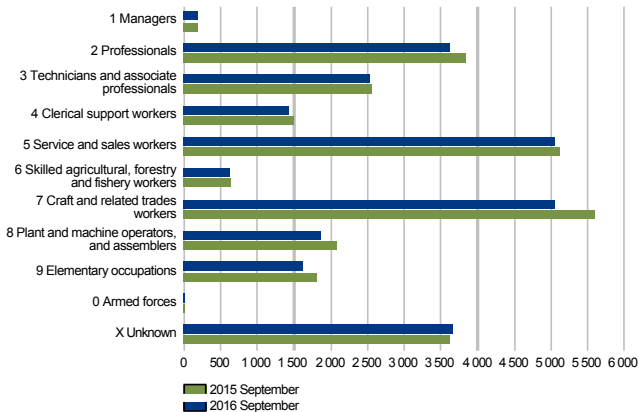
## Unemployed jobseekers by levels of education and occupational group

**UNEMPLOYED JOBSEEKERS BY LEVEL OF EDUCATION**  
North Ostrobothnia



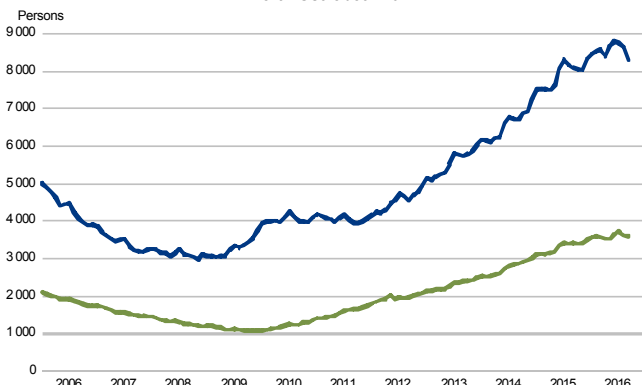
MEAE Employment Service Statistics / Ministry of Economic Affairs and Employment, Employment Service Statistics

**UNEMPLOYED JOBSEEKERS BY OCCUPATIONAL GROUP**  
North Ostrobothnia



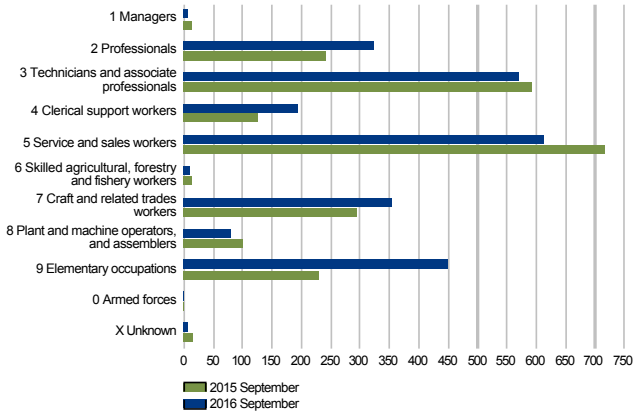
MEAE Employment Service Statistics / Ministry of Economic Affairs and Employment, Employment Service Statistics

**LONG-TERM UNEMPLOYED AT THE END OF THE MONTH**  
North Ostrobothnia



## Jobs vacant

**NEW JOB VACANCIES**  
North Ostrobothnia

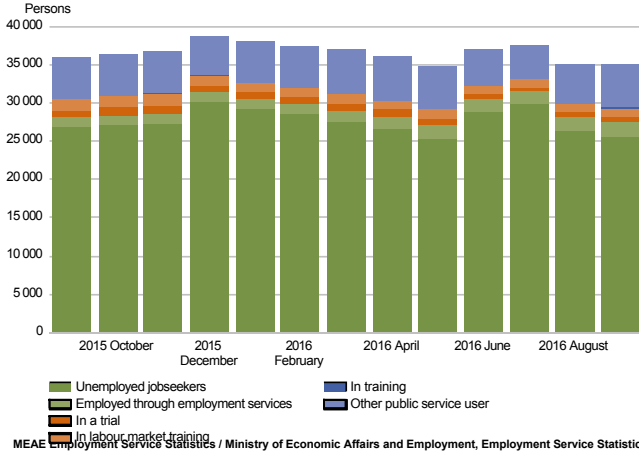


MEAE Employment Service Statistics / Ministry of Economic Affairs and Employment, Employment Service Statistics



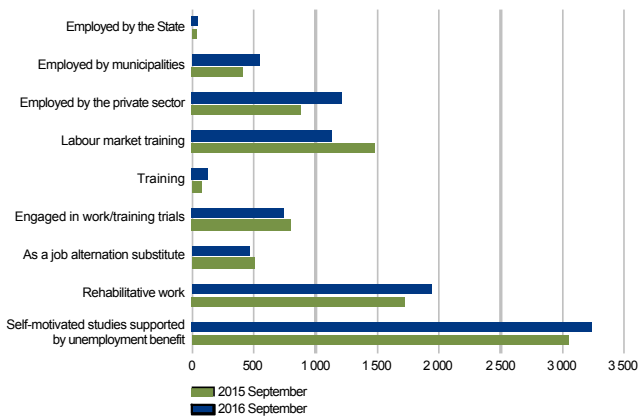
## Services

**BROAD UNEMPLOYMENT**  
North Ostrobothnia



MEAE Employment Service Statistics / Ministry of Economic Affairs and Employment, Employment Service Statistics

**PEOPLE COVERED BY SERVICES**  
North Ostrobothnia



MEAE Employment Service Statistics / Ministry of Economic Affairs and Employment, Employment Service Statistics

## All jobseekers

**JOBSEEKERS BY GROUP**  
North Ostrobothnia



MEAE Employment Service Statistics Ministry of Economic Affairs and Employment, Employment Service Statistics

## Summary table

EMPLOYMENT SITUATION AT THE END OF 2016 SEPTEMBER (I) AND  
ACTIVITIES OF EMPLOYMENT AND ECONOMIC DEVELOPMENT OFFICES DURING SEPTEMBER (II)  
ELY CENTRE: NORTH OSTROBOTHNIA

I EMPLOYMENT SITUATION AT THE END OF MONTH	Sep-16	Sep-15	CHANGE NUMBER	CHANGE %
<b>A. JOBSEEKERS</b>				
1. Unemployed jobseekers	25 691	26 971	-1 280	-4,7
of whom fully laid off	1 214	1 605	-391	-24,4
2. On reduced working week	460	632	-172	-27,2
3. Those who have work	12 489	11 923	566	4,7
of whom in the general labour market	10 833	10 599	234	2,2
of whom employed through employment services	1 656	1 324	332	25,1
4. Persons outside the labour force	9 754	9 989	-235	-2,4
of whom in services promoting employment	2 524	2 418	106	4,4
of whom in training	4 857	5 126	-269	-5,2
5. On unemployment pension	0	0	0	0,0
<b>1-5 Total of jobseekers</b>	<b>48 394</b>	<b>49 515</b>	<b>-1 121</b>	<b>-2,3</b>
<b>B. LABOUR DEMAND</b>				
1. Jobs vacant	2 127	1 758	369	21,0
of those notified for over a month	648	534	114	21,3
of those notified for over 2 months	218	169	49	29,0
<b>C. PARTICIPATING IN SERVICES</b>				
1. Employed by the State	49	37	12	32,4
2. Employed by municipalities	549	415	134	32,3
3. Employed by the private sector	1 216	879	337	38,3
<b>1-3 Total number of employed people</b>	<b>1 814</b>	<b>1 331</b>	<b>483</b>	<b>36,3</b>
4. Labour market training	1 136	1 488	-352	-23,7
5. Training	135	77	58	75,3
6. Engaged in work/training trials	740	795	-55	-6,9
7. As a job alternation substitute	467	502	-35	-7,0
8. Rehabilitative work	1 933	1 725	208	12,1
9. Self-motivated studies supported by unemployment benefit	3 229	3 049	180	5,9
<b>1-9 Total number of people participating in services</b>	<b>9 454</b>	<b>8 967</b>	<b>487</b>	<b>5,4</b>
<b>D. STRUCTURE OF UNEMPLOYMENT</b>				
1. Unemployed women	11 693	12 077	-384	-3,2
2. Unemployed men	13 998	14 894	-896	-6,0
3. Under 25 years old	4 417	4 624	-207	-4,5
4. Over 50 years old	8 009	8 424	-415	-4,9
5. Unemployed over a year	8 296	8 082	214	2,6
6. Foreign unemployed	1 156	1 091	65	6,0
<b>E. UNEMPLOYMENT SECURITY</b>				
1. Unemployed members of employees' unemployment funds	10 869	12 197	-1 328	-10,9
<b>II EMPLOYMENT SITUATION DURING THE MONTH</b>				
1. Unemployed jobseekers	28 979	30 187	-1 208	-4,0
2. Other jobseekers	21 783	21 682	101	0,5
<b>1-2 Total number of jobseekers</b>	<b>50 762</b>	<b>51 869</b>	<b>-1 107</b>	<b>-2,1</b>
3. Vacancies during a month	4 610	3 916	694	17,7
New vacancies during a month	2 604	2 339	265	11,3
Vacancies filled during a month	523	511	12	2,3
of those filled with job-seekers at the Employment Service	291	262	29	11,1
4. Started spell of unemployment	4 206	4 430	-224	-5,1
5. Completed spell of unemployment	3 850	4 019	-169	-4,2
6. New jobs found through employment services	331	196	135	68,9
7. New entrants to labour market training	407	498	-91	-18,3

## Foreigners' summary table

FOREIGNERS' EMPLOYMENT SITUATION AT THE END OF 2016 SEPTEMBER (I) AND  
ACTIVITIES OF EMPLOYMENT AND ECONOMIC DEVELOPMENT OFFICES DURING SEPTEMBER (II)  
ELY CENTRE: NORTH OSTROBOTHNIA

I EMPLOYMENT SITUATION AT THE END OF MONTH	Sep-16	Sep-15	CHANGE NUMBER	CHANGE %
<b>A. JOBSEEKERS</b>				
1. Unemployed jobseekers	1 156	1 091	65	6,0
of whom fully laid off	19	24	-5	-20,8
2. On reduced working week	..	22	..	..
3. Those who have work	488	412	76	18,4
of whom in the general labour market	426	365	61	16,7
of whom employed through employment services	62	47	15	31,9
4. Persons outside the labour force	1 280	1 156	124	10,7
of whom in services promoting employment	196	166	30	18,1
of whom in training	940	865	75	8,7
5. On unemployment pension	0	0	0	0,0
<b>1-5 Total of jobseekers</b>	<b>2 928</b>	<b>2 681</b>	<b>247</b>	<b>9,2</b>
<b>C. PARTICIPATING IN SERVICES</b>				
1. Employed by the State	..	..	..	..
2. Employed by municipalities	15	11	4	36,4
3. Employed by the private sector	55	27	28	103,7
<b>1-3 Total number of employed people</b>	<b>72</b>	<b>40</b>	<b>32</b>	<b>80,0</b>
4. Labour market training	377	432	-55	-12,7
5. Training	..	..	..	..
6. Engaged in work/training trials	139	94	45	47,9
7. As a job alternation substitute	..	5	..	..
8. Rehabilitative work	83	86	-3	-3,5
9. Self-motivated studies supported by unemployment benefit	526	408	118	28,9
<b>1-9 Total number of people participating in services</b>	<b>1 203</b>	<b>1 067</b>	<b>136</b>	<b>12,7</b>
<b>D. STRUCTURE OF UNEMPLOYMENT</b>				
1. Unemployed women	595	576	19	3,3
2. Unemployed men	561	515	46	8,9
3. Under 25 years old	112	95	17	17,9
4. Over 50 years old	225	220	5	2,3
5. Unemployed over a year	264	239	25	10,5
<b>E. UNEMPLOYMENT SECURITY</b>				
1. Unemployed members of employees' unemployment funds	187	228	-41	-18,0
<b>II EMPLOYMENT SITUATION DURING THE MONTH</b>				
1. Unemployed jobseekers	1 360	1 284	76	5,9
2. Other jobseekers	1 620	1 450	170	11,7
<b>1-2 Total number of jobseekers</b>	<b>2 980</b>	<b>2 734</b>	<b>246</b>	<b>9,0</b>
4. Started spell of unemployment	255	203	52	25,6
5. Completed spell of unemployment	221	237	-16	-6,8
6. New jobs found through employment services	16	11	5	45,5
7. New entrants to labour market training	47	95	-48	-50,5

## Regional table

UNEMPLOYED JOBSEEKERS AND JOBS VACANT BY MUNICIPALITY AT THE END OF 2016 SEPTEMBER  
ELY CENTRE: NORTH OSTROBOTHNIA

Municipality	Workforce		Unemployed jobseekers						Unemployed over a year	Disabled and chron. ill	Jobs vacant
	% of workforce	Total	Men	Women	Under 20 years old	Under 25 years old	Over 50 years old				
Alavieska	1 155	9,4	108	59	49	0	10	38	43	11	..
Haapajärvi	3 149	9,9	311	149	162	15	59	105	74	53	20
Haapavesi	3 045	11,4	348	210	138	20	78	141	106	57	19
Hailuoto	397	11,6	46	31	15	..	..	23	19	..	..
Ii	4 141	15,3	632	353	279	22	70	275	216	98	33
Kalajoki	5 666	9,7	548	277	271	14	84	198	145	65	19
Kempele	8 071	11,5	928	461	467	44	158	275	314	101	53
Kuusamo	6 935	12,3	855	474	381	39	137	372	183	104	163
Kärsämäki	1 091	9,7	106	51	55	..	12	55	40	16	6
Liminka	4 201	8,9	374	181	193	17	52	104	83	38	14
Lumijoki	818	9,5	78	31	47	..	13	22	24	6	..
Merijärvi	447	9,2	41	25	16	..	5	19	12	6	0
Muhos	3 912	11,9	466	258	208	19	68	151	157	43	13
Nivala	4 571	11,1	507	282	225	26	81	166	150	72	15
Oulainen	3 245	11,1	360	190	170	14	53	141	105	64	24
Oulu	95 863	15,8	15 112	8 343	6 769	621	2 799	4 094	5 317	1 764	1 351
Pudasjärvi	3 211	15,4	494	313	181	13	53	260	127	94	36
Pyhäjoki	1 352	9,8	133	64	69	..	22	42	33	16	22
Pyhäjärvi	2 200	11,0	243	145	98	10	31	103	66	43	..
Pyhäntä	668	10,2	68	39	29	..	7	32	12	10	..
Raahe	10 902	12,4	1 353	668	685	76	296	408	274	207	179
Reisjärvi	1 202	8,2	98	67	31	5	16	38	32	11	..
Sievi	2 000	10,6	212	119	93	8	39	65	61	26	12
Siikajoki	2 250	10,5	237	122	115	8	26	73	61	32	8
Siikalatva	2 411	10,5	252	133	119	14	33	106	78	29	21
Taivalkoski	1 748	16,4	286	165	121	7	22	147	85	30	8
Tyrnävä	2 846	10,8	307	144	163	15	45	104	92	37	5
Utajärvi	1 168	13,7	160	86	74	..	14	100	74	27	..
Vaala	1 200	16,2	194	116	78	..	19	112	69	29	8
Ylivieska	6 867	12,1	834	442	392	24	111	240	244	90	80
Total	186 732	13,8	25 691	13 998	11 693	1 051	4 417	8 009	8 296	3 183	2 127

## Information about the website

On this website you will find the latest statistics from ELY Centre for North Ostrobothnia's monthly Employment Bulletin. You can access a .pdf version of the current and previous months' Employment Bulletin by following the link on the right.

The Employment Bulletin is based on the data from the MEAE's Employment Service Statistics. The Ministry of Economic Affairs and Employment compiles statistics on the clients of the Employment and economic development offices (TE offices), including registered job-seekers, labour market policy services, and job vacancies reported to TE offices by employers. The data is collected from the customer service registry (URA) used by the TE offices. This means that the data used by MEAE Employment Service Statistics is completely registry-based.

The statistical data covers all persons, services, and open vacancies in the aforementioned groups, as separately defined in the registry by the classifications and variables for the statistical period in question.

Owing to seasonal variations, the Employment Bulletin always includes a comparison with the corresponding month in the previous year. The descriptors used in the Bulletin are also available in a table format. The Employment Bulletins are published at the end of the subsequent calendar month. The official date of publication is announced in advance.

The following symbols have been used:

. Category not applicable

.. Data not available or too uncertain for presentation, or subject to secrecy

### Links:

- The North Ostrobothnia's information for Labour market online:
- <http://www.ely-keskus.fi/web/ely/ely-pohjois-pohjanmaa-tyomarkkinoiden-tyovoimatarpeen-ja-talouden-kehitys#.Vuj7vbd2po>
- Employment Service Statistics online: <http://www.tem.fi/en/employment-bulletin-and-employment-service-statistics>
- Employment Service Statistics, Description and Quality Description <http://www.tem.fi/en/release-dates-of-statistics-and-description-and-quality-description>
- You can access key information from MEAE's Employment Service Statistics by visiting the Sector Online website: <http://www.toimialaonline.fi> Pathway: Statistical base – Labour market – Employment service statistics
- The Employment Service Statistics data is also available from the MEAE Publications page (only available in Finnish). <http://www.tem.fi/tyopoliittinen-aikakauskirja>
- Joint monthly report from MEAE and Statistics Finland [http://www.tilastokeskus.fi/til/tyti/tie\\_en.html](http://www.tilastokeskus.fi/til/tyti/tie_en.html)
- Comparison between the statistics of Statistics Finland and the Ministry of Economic Affairs and Employment [http://www.tilastokeskus.fi/til/tyti/tyti\\_2015-04-28\\_men\\_001\\_en.html](http://www.tilastokeskus.fi/til/tyti/tyti_2015-04-28_men_001_en.html)

**Instructions for referencing:** Official Statistics of Finland (OSF): Ministry of Economic Affairs and Employment / Employment Service Statistics. 201Y:MM, North Ostrobothnia's Employment Bulletin MONTH 201Y. Oulu: Centre for Economic Development Transport and the Environment

## Contact information

**Centre for Economic Development, Transport and  
the Environment for North Ostrobothnia**

Economic Development, Employment and Competence

Petri Keränen, +358 295 026 727

Jarkko Pietilä, +358 295 038 116

Helena Suvanto (statistics), + 358 295 038 235

E-mail: [firstname.lastname\(at\)ely-keskus.fi](mailto:firstname.lastname(at)ely-keskus.fi)

**North Ostrobothnia's Employment and Economic  
Development Office**

Maire Mäki, +358 295 056 800

Pirjo Juntunen

Marita Rimpeläinen

Mari Tuomikoski

Contact directors: +358 295 056 500

E-mail: [firstname.lastname\(at\)te-toimisto.fi](mailto:firstname.lastname(at)te-toimisto.fi)

<http://www.temtyollisyyskatsaus.fi/pohjois-pohjanmaa.aspx>

