



Centre for Economic Development,  
Transport and the Environment



TE-palvelut  
tjänster | services

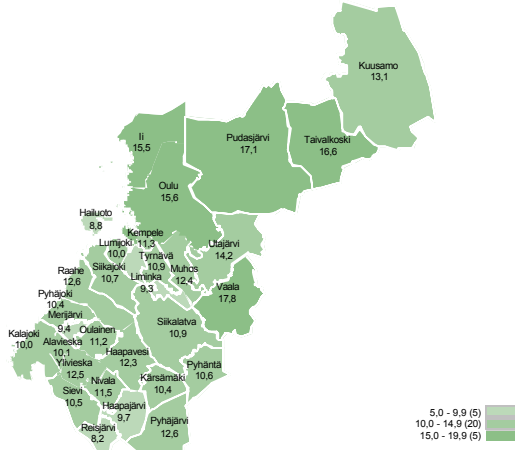
NORTH OSTROBOTHNIA

# Employment Bulletin

October 2016

## Unemployed jobseeker's percentage of the workforce

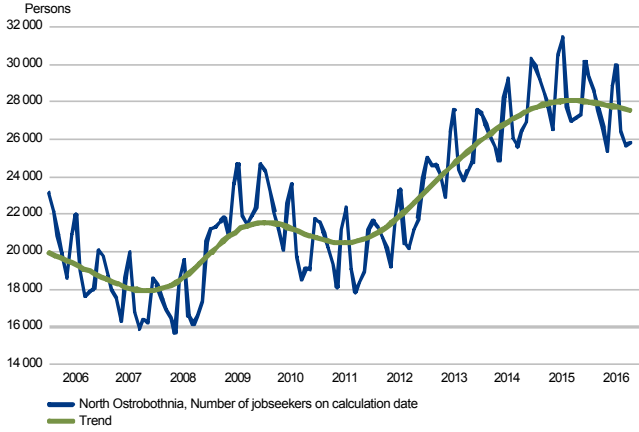
Unemployed jobseekers' percentage of the workforce by municipality



MEAE Employment Service Statistics / Ministry of Economic Affairs and Employment, Employment Service Statistics

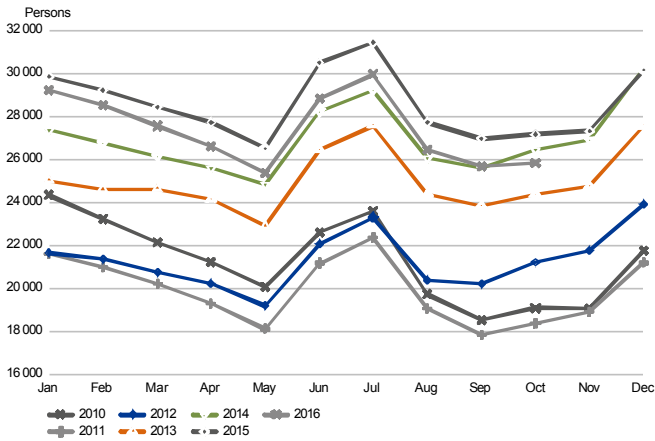
## Unemployed jobseekers

**UNEMPLOYED JOBSEEKERS MONTHLY AND TREND**  
North Ostrobothnia



MEAE Employment Service Statistics / Ministry of Economic Affairs and Employment, Employment Service Statistics

**UNEMPLOYED JOBSEEKERS, MONTH BY MONTH COMPARISON**  
North Ostrobothnia

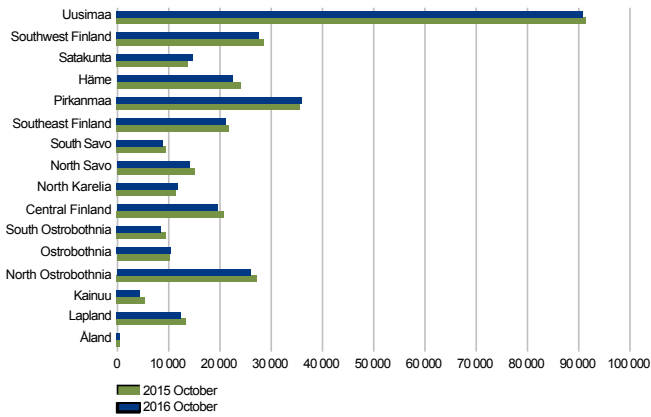


MEAE Employment Service Statistics / Ministry of Economic Affairs and Employment, Employment Service Statistics

## Unemployed jobseekers by sub-regional unit

### UNEMPLOYED JOBSEEKERS

by Centre for Economic Development, Transport and the Environment (ELY)



MEAE Employment Service Statistics / Ministry of Economic Affairs and Employment, Employment Service Statistics

### Unemployed jobseekers and jobs vacant in Employment and Economic Development Office by sub-regional unit

Sub-regional unit	Unemployed jobseekers			Change		Of the unemployed jobseekers fully laid off	Unemployed jobseekers' percentage of the workforce	Jobs vacant			Change	
	Oct 2016	Sep 2016	Oct 2015	Oct 2016	Oct 2015			Oct 2016	Sep 2016	Oct 2015	Oct 2016	Oct 2015
Oulu	17 132	17 311	17 727	-595	-3	655	14,8	1 361	1 440	1 057	304	29
Oulunkaari	1 572	1 480	1 677	-105	-6	113	16,2	80	81	75	5	7
Raahe	1 756	1 723	1 863	-107	-6	147	12,1	252	209	152	100	66
Haapavesi-Siikalatva	711	668	788	-77	-10	53	11,6	32	42	49	-17	-35
Nivala-Haapajärvi	1 321	1 265	1 455	-134	-9	119	10,8	46	45	49	-3	-6
Ylivieska	2 155	2 103	2 343	-188	-8	158	11,1	159	139	154	5	3
Koillismaa	1 197	1 141	1 333	-136	-10	84	13,8	140	171	129	11	9
North Ostrobothnia	25 844	25 691	27 186	-1 342	-5	1 329	13,8	2 070	2 127	1 665	405	24



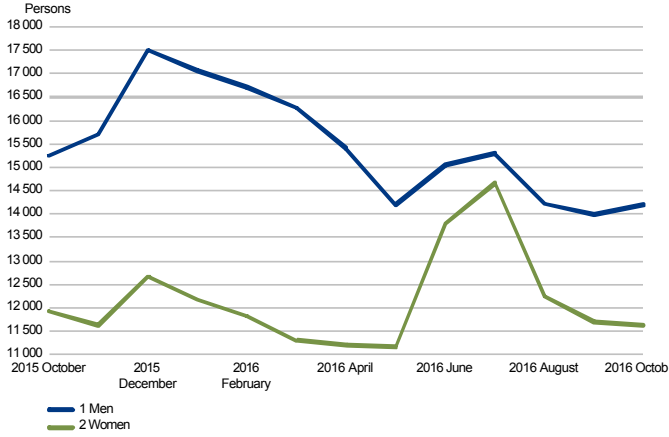
## Unemployed jobseekers by municipality

## Unemployed jobseekers and jobs vacant in Employment and Economic Development Office by municipality

Municipality	Oct	Sep	Oct	Change		Of the unemployed jobseekers fully laid off	Unemployed jobseekers' percentage of the workforce	Oct	Sep	Oct	Change	
	2016	2016	2015	Oct 2016	Oct 2015			2016	2016	2015	Oct 2016	Oct 2015
	Unemployed jobseekers			%			%	Jobs vacant			%	
Alavieska	117	108	154	-37	-24	6	10,1	6	..	0	6	0
Haapajärvi	304	311	356	-52	-15	21	9,7	16	20	13	3	23
Haapavesi	376	348	401	-25	-6	41	12,3	12	19	25	-13	-52
Hailuoto	35	46	54	-19	-35	..	8,8	..	..	..	..	..
<b>I</b>	<b>643</b>	<b>632</b>	<b>701</b>	<b>-58</b>	<b>-8</b>	<b>49</b>	<b>15,5</b>	<b>29</b>	<b>33</b>	<b>13</b>	<b>16</b>	<b>123</b>
Kalajoki	564	548	620	-56	-9	59	10,0	22	19	27	-5	-19
Kempele	914	928	991	-77	-8	50	11,3	60	53	36	24	67
Kuusamo	907	855	1 019	-112	-11	75	13,1	131	163	119	12	10
Kärsämäki	114	106	133	-19	-14	7	10,4	6	6	..	..	..
Liminka	390	374	391	-1	0	26	9,3	23	14	23	0	0
Lumijoki	82	78	85	-3	-4	..	10,0	..	..	0	..	..
Merijärvi	42	41	41	1	2	5	9,4	..	0	..	..	..
Muhos	486	466	502	-16	-3	25	12,4	20	13	11	9	82
Nivala	526	507	564	-38	-7	57	11,5	11	15	13	-2	-15
Oulainen	364	360	429	-65	-15	26	11,2	22	24	21	1	5
Oulu	14 916	15 112	15 360	-444	-3	532	15,6	1 251	1 351	978	273	28
Pudasjärvi	550	494	592	-42	-7	46	17,1	43	36	51	-8	-16
Pyhäjoki	141	133	135	6	4	14	10,4	25	22	24	1	4
Pyhäjärvi	278	243	305	-27	-9	17	12,6	10	..	18	-8	-44
Pyhäntä	71	68	79	-8	-10	..	10,6	5	..	8	-3	-37
Raahe	1 375	1 353	1 463	-88	-6	116	12,6	214	179	124	90	73
Reisjärvi	99	98	97	2	2	17	8,2	..	..	..	..	..
Sievi	210	212	231	-21	-9	15	10,5	35	12	27	8	30
Siikajoki	240	237	265	-25	-9	17	10,7	13	8	..	..	..
Siikalatva	264	252	308	-44	-14	9	10,9	15	21	16	-1	-6
Taivalkoski	290	286	314	-24	-8	9	16,6	9	8	10	-1	-10
Tyrnävä	309	307	344	-35	-10	16	10,9	..	5	8	..	..
Utajärvi	166	160	174	-8	-5	8	14,2	..	..	5	..	..
Vaala	213	194	210	3	1	10	17,8	5	8	6	-1	-17
Ylivieska	858	834	868	-10	-1	47	12,5	73	80	78	-5	-6
North Ostrobothnia	25 844	25 691	27 186	-1 342	-5	1 329	13,8	2 070	2 127	1 665	405	24

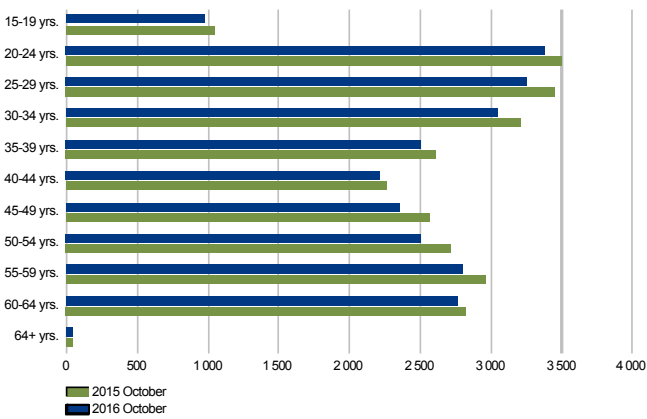
## Unemployed jobseekers by gender and age-group

**UNEMPLOYED JOBSEEKERS BY GENDER**  
North Ostrobothnia



MEAE Employment Service Statistics / Ministry of Economic Affairs and Employment, Employment Service Statistics

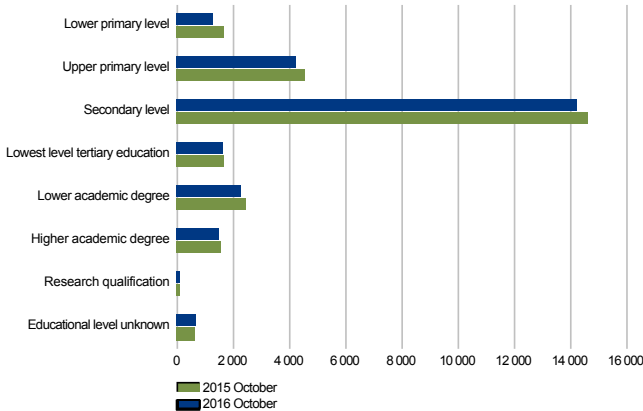
**UNEMPLOYED JOBSEEKERS BY AGE GROUP**  
North Ostrobothnia



MEAE Employment Service Statistics / Ministry of Economic Affairs and Employment, Employment Service Statistics

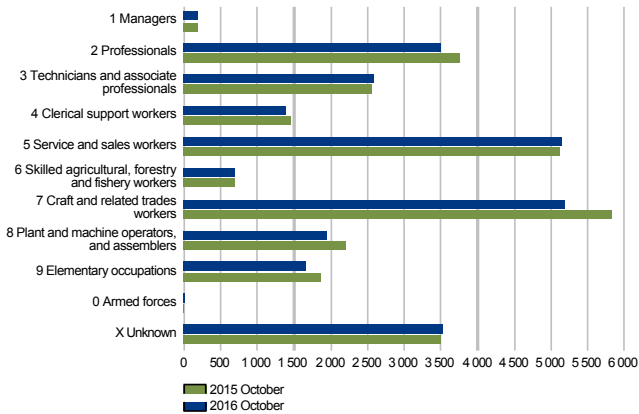
## Unemployed jobseekers by levels of education and occupational group

**UNEMPLOYED JOBSEEKERS BY LEVEL OF EDUCATION**  
North Ostrobothnia



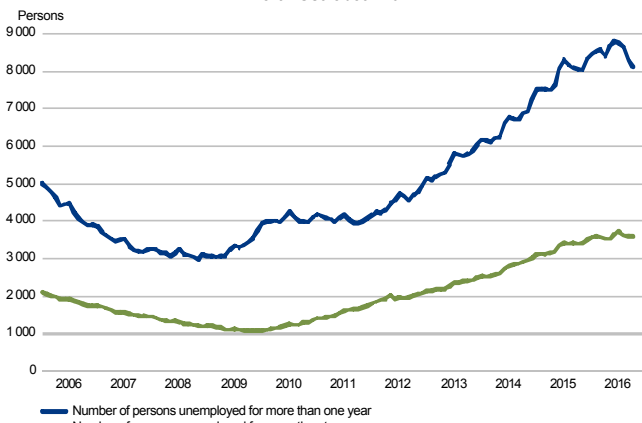
MEAE Employment Service Statistics / Ministry of Economic Affairs and Employment, Employment Service Statistics

**UNEMPLOYED JOBSEEKERS BY OCCUPATIONAL GROUP**  
North Ostrobothnia



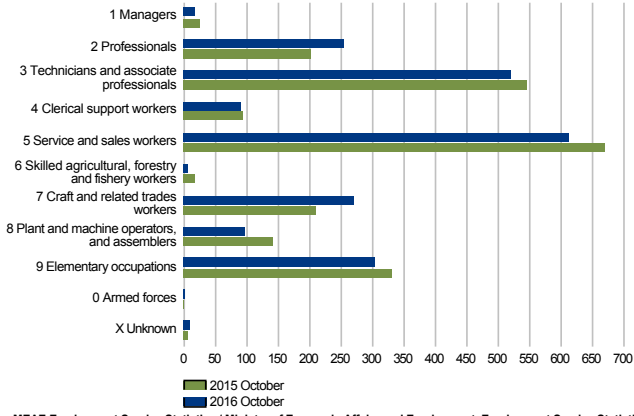
MEAE Employment Service Statistics / Ministry of Economic Affairs and Employment, Employment Service Statistics

**LONG-TERM UNEMPLOYED AT THE END OF THE MONTH**  
North Ostrobothnia



## Jobs vacant

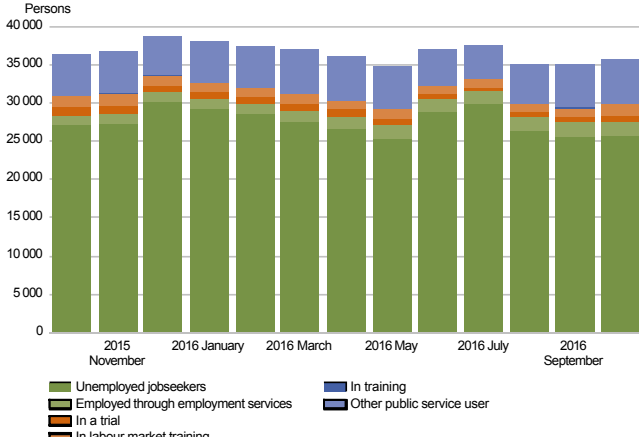
**NEW JOB VACANCIES**  
North Ostrobothnia





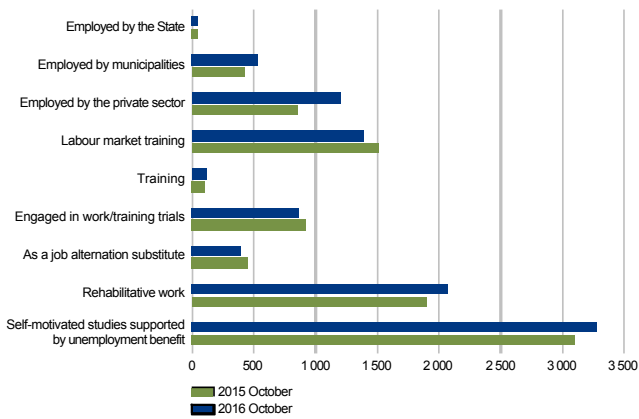
## Services

**BROAD UNEMPLOYMENT**  
North Ostrobothnia



MEAE Employment Service Statistics / Ministry of Economic Affairs and Employment, Employment Service Statistics

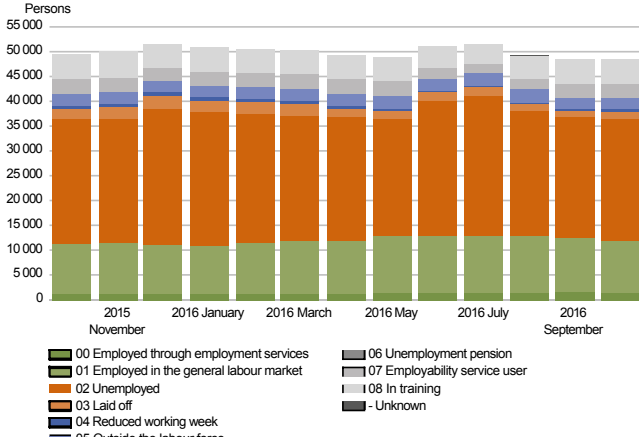
**PEOPLE COVERED BY SERVICES**  
North Ostrobothnia



MEAE Employment Service Statistics / Ministry of Economic Affairs and Employment, Employment Service Statistics

## All jobseekers

**JOBSEEKERS BY GROUP**  
North Ostrobothnia



MEAE Employment Service Statistics Ministry of Economic Affairs and Employment, Employment Service Statistics

## Summary table

EMPLOYMENT SITUATION AT THE END OF 2016 OCTOBER (I) AND  
ACTIVITIES OF EMPLOYMENT AND ECONOMIC DEVELOPMENT OFFICES DURING OCTOBER (II)  
ELY CENTRE: NORTH OSTROBOTHNIA

I EMPLOYMENT SITUATION AT THE END OF MONTH	Oct-16	Oct-15	CHANGE NUMBER	CHANGE %
<b>A. JOBSEEKERS</b>				
1. Unemployed jobseekers	25 844	27 186	-1 342	-4,9
of whom fully laid off	1 329	1 831	-502	-27,4
2. On reduced working week	484	660	-176	-26,7
3. Those who have work	12 059	11 347	712	6,3
of whom in the general labour market	10 423	10 063	360	3,6
of whom employed through employment services	1 636	1 284	352	27,4
4. Persons outside the labour force	10 168	10 313	-145	-1,4
of whom in services promoting employment	2 816	2 674	142	5,3
of whom in training	5 017	5 164	-147	-2,8
5. On unemployment pension	0	0	0	0,0
<b>1-5 Total of jobseekers</b>	<b>48 555</b>	<b>49 506</b>	<b>-951</b>	<b>-1,9</b>
<b>B. LABOUR DEMAND</b>				
1. Jobs vacant	2 070	1 665	405	24,3
of those notified for over a month	768	503	265	52,7
of those notified for over 2 months	296	218	78	35,8
<b>C. PARTICIPATING IN SERVICES</b>				
1. Employed by the State	46	48	-2	-4,2
2. Employed by municipalities	529	421	108	25,7
3. Employed by the private sector	1 200	855	345	40,4
<b>1-3 Total number of employed people</b>	<b>1 775</b>	<b>1 324</b>	<b>451</b>	<b>34,1</b>
4. Labour market training	1 382	1 515	-133	-8,8
5. Training	112	97	15	15,5
6. Engaged in work/training trials	869	919	-50	-5,4
7. As a job alternation substitute	397	448	-51	-11,4
8. Rehabilitative work	2 075	1 890	185	9,8
9. Self-motivated studies supported by unemployment benefit	3 273	3 099	174	5,6
<b>1-9 Total number of people participating in services</b>	<b>9 883</b>	<b>9 292</b>	<b>591</b>	<b>6,4</b>
<b>D. STRUCTURE OF UNEMPLOYMENT</b>				
1. Unemployed women	11 633	11 934	-301	-2,5
2. Unemployed men	14 211	15 252	-1 041	-6,8
3. Under 25 years old	4 367	4 544	-177	-3,9
4. Over 50 years old	8 109	8 537	-428	-5,0
5. Unemployed over a year	8 111	8 063	48	0,6
6. Foreign unemployed	1 026	1 012	14	1,4
<b>E. UNEMPLOYMENT SECURITY</b>				
1. Unemployed members of employees' unemployment funds	11 311	12 642	-1 331	-10,5
<b>II EMPLOYMENT SITUATION DURING THE MONTH</b>				
1. Unemployed jobseekers	28 918	30 308	-1 390	-4,6
2. Other jobseekers	21 547	21 358	189	0,9
<b>1-2 Total number of jobseekers</b>	<b>50 465</b>	<b>51 666</b>	<b>-1 201</b>	<b>-2,3</b>
3. Vacancies during a month	4 302	3 965	337	8,5
New vacancies during a month	2 181	2 237	-56	-2,5
Vacancies filled during a month	385	422	-37	-8,8
of those filled with job-seekers at the Employment Service	167	189	-22	-11,6
4. Started spell of unemployment	4 273	4 738	-465	-9,8
5. Completed spell of unemployment	3 872	3 600	272	7,6
6. New jobs found through employment services	278	220	58	26,4
7. New entrants to labour market training	427	341	86	25,2

## Foreigners' summary table

FOREIGNERS' EMPLOYMENT SITUATION AT THE END OF 2016 OCTOBER (I) AND  
ACTIVITIES OF EMPLOYMENT AND ECONOMIC DEVELOPMENT OFFICES DURING OCTOBER (II)  
ELY CENTRE: NORTH OSTROBOTHNIA

I EMPLOYMENT SITUATION AT THE END OF MONTH	Oct-16	Oct-15	CHANGE NUMBER	CHANGE %
<b>A. JOBSEEKERS</b>				
1. Unemployed jobseekers	1 026	1 012	14	1,4
of whom fully laid off	19	31	-12	-38,7
2. On reduced working week	7	19	-12	-63,2
3. Those who have work	476	413	63	15,3
of whom in the general labour market	418	368	50	13,6
of whom employed through employment services	58	45	13	28,9
4. Persons outside the labour force	1 459	1 248	211	16,9
of whom in services promoting employment	241	194	47	24,2
of whom in training	1 073	931	142	15,3
5. On unemployment pension	0	0	0	0,0
<b>1-5 Total of jobseekers</b>	<b>2 968</b>	<b>2 692</b>	<b>276</b>	<b>10,3</b>
<b>C. PARTICIPATING IN SERVICES</b>				
1. Employed by the State	..	..	..	..
2. Employed by municipalities	9	10	-1	-10,0
3. Employed by the private sector	57	27	30	111,1
<b>1-3 Total number of employed people</b>	<b>68</b>	<b>40</b>	<b>28</b>	<b>70,0</b>
4. Labour market training	456	491	-35	-7,1
5. Training	..	..	..	..
6. Engaged in work/training trials	167	116	51	44,0
7. As a job alternation substitute	5	..	..	..
8. Rehabilitative work	98	103	-5	-4,9
9. Self-motivated studies supported by unemployment benefit	580	427	153	35,8
<b>1-9 Total number of people participating in services</b>	<b>1 375</b>	<b>1 182</b>	<b>193</b>	<b>16,3</b>
<b>D. STRUCTURE OF UNEMPLOYMENT</b>				
1. Unemployed women	534	519	15	2,9
2. Unemployed men	492	493	-1	-0,2
3. Under 25 years old	104	90	14	15,6
4. Over 50 years old	211	197	14	7,1
5. Unemployed over a year	246	232	14	6,0
<b>E. UNEMPLOYMENT SECURITY</b>				
1. Unemployed members of employees' unemployment funds	185	226	-41	-18,1
<b>II EMPLOYMENT SITUATION DURING THE MONTH</b>				
1. Unemployed jobseekers	1 277	1 204	73	6,1
2. Other jobseekers	1 736	1 538	198	12,9
<b>1-2 Total number of jobseekers</b>	<b>3 013</b>	<b>2 742</b>	<b>271</b>	<b>9,9</b>
4. Started spell of unemployment	176	189	-13	-6,9
5. Completed spell of unemployment	274	187	87	46,5
6. New jobs found through employment services	9	6	3	50,0
7. New entrants to labour market training	118	82	36	43,9



## Regional table

UNEMPLOYED JOBSEEKERS AND JOBS VACANT BY MUNICIPALITY AT THE END OF 2016 OCTOBER  
ELY CENTRE: NORTH OSTROBOTHNIA

Municipality	Workforce	Unemployed jobseekers							Unemployed over a year	Disabled and chron. ill	Jobs vacant
		% of workforce	Total	Men	Women	Under 20 years old	Under 25 years old	Over 50 years old			
Alavieska	1 155	10,1	117	58	59	..	11	42	41	10	6
Haapajärvi	3 149	9,7	304	151	153	13	56	104	73	55	16
Haapavesi	3 045	12,3	376	237	139	22	83	144	109	60	12
Hailuoto	397	8,8	35	24	11	..	..	18	13	..	..
Ii	4 141	15,5	643	360	283	15	66	280	209	97	29
Kalajoki	5 666	10,0	564	288	276	17	84	219	154	69	22
Kempele	8 071	11,3	914	456	458	44	150	265	302	93	60
Kuusamo	6 935	13,1	907	511	396	40	141	407	183	99	131
Kärsämäki	1 091	10,4	114	60	54	..	15	56	41	15	6
Liminka	4 201	9,3	390	184	206	17	57	109	84	42	23
Lumijoki	818	10,0	82	35	47	..	14	24	22	5	..
Merijärvi	447	9,4	42	27	15	..	5	18	11	5	..
Muhos	3 912	12,4	486	272	214	20	66	156	156	41	20
Nivala	4 571	11,5	526	298	228	22	97	172	148	73	11
Oulainen	3 245	11,2	364	199	165	13	56	140	98	62	22
Oulu	95 863	15,6	14 916	8 290	6 626	565	2 701	4 066	5 180	1 726	1 251
Pudasjärvi	3 211	17,1	550	362	188	13	59	274	127	99	43
Pyhäjoki	1 352	10,4	141	67	74	..	26	47	31	18	25
Pyhäjärvi	2 200	12,6	278	171	107	8	34	118	66	48	10
Pyhäntä	668	10,6	71	39	32	..	9	30	15	8	5
Raahe	10 902	12,6	1 375	689	686	70	298	410	276	193	214
Reisjärvi	1 202	8,2	99	67	32	6	21	35	29	11	..
Sievi	2 000	10,5	210	117	93	8	37	65	59	28	35
Siikajoki	2 250	10,7	240	119	121	7	25	73	58	32	13
Siikalatva	2 411	10,9	264	152	112	13	38	112	72	30	15
Taivalkoski	1 748	16,6	290	167	123	8	25	142	87	30	9
Tyrnävä	2 846	10,9	309	142	167	10	41	105	86	37	..
Utajärvi	1 168	14,2	166	91	75	..	10	105	66	28	..
Vaala	1 200	17,8	213	127	86	..	20	121	66	29	5
Ylivieska	6 867	12,5	858	451	407	27	119	252	249	87	73
Total	186 732	13,8	25 844	14 211	11 633	979	4 367	8 109	8 111	3 133	2 070

## Information about the website

On this website you will find the latest statistics from ELY Centre for North Ostrobothnia's monthly Employment Bulletin. You can access a .pdf version of the current and previous months' Employment Bulletin by following the link on the right.

The Employment Bulletin is based on the data from the MEAE's Employment Service Statistics. The Ministry of Economic Affairs and Employment compiles statistics on the clients of the Employment and economic development offices (TE offices), including registered job-seekers, labour market policy services, and job vacancies reported to TE offices by employers. The data is collected from the customer service registry (URA) used by the TE offices. This means that the data used by MEAE Employment Service Statistics is completely registry-based.

The statistical data covers all persons, services, and open vacancies in the aforementioned groups, as separately defined in the registry by the classifications and variables for the statistical period in question.

Owing to seasonal variations, the Employment Bulletin always includes a comparison with the corresponding month in the previous year. The descriptors used in the Bulletin are also available in a table format. The Employment Bulletins are published at the end of the subsequent calendar month. The official date of publication is announced in advance.

The following symbols have been used:

. Category not applicable

.. Data not available or too uncertain for presentation, or subject to secrecy

### Links:

- The North Ostrobothnia's information for Labour market online: <http://www.ely-keskus.fi/web/ely/ely-pohjois-pohjanmaa-tyomarkkinoiden-tyovoimatarpeen-ja-talouden-kehitys#.Vuj7vbuf2po>
- Employment Service Statistics online: <http://www.tem.fi/en/employment-bulletin-and-employment-service-statistics>
- Employment Service Statistics, Description and Quality Description <http://www.tem.fi/en/release-dates-of-statistics-and-description-and-quality-description>
- You can access key information from MEAE's Employment Service Statistics by visiting the Sector Online website: <http://www.toimialaonline.fi> Pathway: Statistical base – Labour market – Employment service statistics
- The Employment Service Statistics data is also available from the MEAE Publications page (only available in Finnish). <http://www.tem.fi/tyopoliittinen-aikakauskirja>
- Joint monthly report from MEAE and Statistics Finland [http://www.tilastokeskus.fi/til/tyti/tie\\_en.html](http://www.tilastokeskus.fi/til/tyti/tie_en.html)
- Comparison between the statistics of Statistics Finland and the Ministry of Economic Affairs and Employment [http://www.tilastokeskus.fi/til/tyti/tyti\\_2015-04-28\\_men\\_001\\_en.html](http://www.tilastokeskus.fi/til/tyti/tyti_2015-04-28_men_001_en.html)

**Instructions for referencing:** Official Statistics of Finland (OSF): Ministry of Economic Affairs and Employment / Employment Service Statistics. 201Y:MM, North Ostrobothnia's Employment Bulletin, MONTH 201Y. Oulu: Centre for Economic Development, Transport and the Environment (date of reference). Available at: <http://www.temtyollisyyskatsaus.fi/pohjois-pohjanmaa.aspx>



## Contact information

**Centre for Economic Development, Transport and  
the Environment for North Ostrobothnia**

Economic Development, Employment and Competence

Petri Keränen, +358 295 026 727

Jarkko Pietilä, +358 295 038 116

Helena Suvanto (statistics), + 358 295 038 235

E-mail: [firstname.lastname\(at\)ely-keskus.fi](mailto:firstname.lastname(at)ely-keskus.fi)

**North Ostrobothnia's Employment and Economic  
Development Office**

Pirjo Juntunen, +358 295 056 596

Marita Rimpeläinen, +358 295 056 713

Mari Tuomikoski, +358 295 056 801

E-mail: [firstname.lastname\(at\)te-toimisto.fi](mailto:firstname.lastname(at)te-toimisto.fi)

<http://www.temtyollisyyskatsaus.fi/pohjois-pohjanmaa.aspx>

